

# Saphyr - Ref. SPX450

Multi-Layer Hi-Resolution Mixer Seamless Switcher with 10 inputs and Native Matrix mode



## INPUT PLUGS



## PROGRAM/ OUTPUT #1



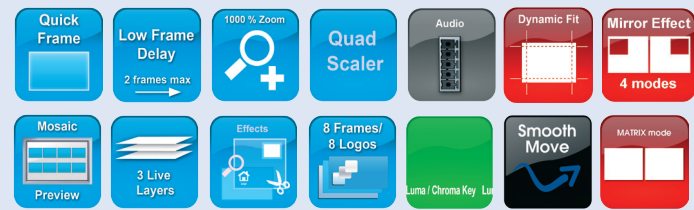
## PREVIEW/ OUTPUT #2



## VIDEO OUT



## FEATURES



## Saphyr at a glance

- ▶ New Midra™ Platform
- ▶ New Remote Control Software: RCS<sup>2</sup> (Windows, Mac & Linux)
- ▶ Very fast processing and True Seamless switching
- ▶ Low frame delay (1 to 2 frames max.)
- ▶ 2 operating modes: Mixer and Native Matrix modes
- ▶ Up to 3 layers on Frame Background
- ▶ Full audio digital compliant on DVI-D & HDMI Plugs
- ▶ Advanced audio management with the RCS<sup>2</sup>
- ▶ Audio fast Routing mode
- ▶ Quick Frame mode
- ▶ New EDID management on 6 inputs
- ▶ Ability to read and display the output EDIDs
- ▶ New Deinterlacing processing
- ▶ Custom output formats
- ▶ Ability to modify the Program in real time without using the Preview
- ▶ New Freeze features (Input/layer/screen)
- ▶ New Dynamic Fit
- ▶ Capability to switch between any input plugs (16 plugs available)
- ▶ New 3D filter for SDTV composite sources
- ▶ Outputs fully resizable
- ▶ Capability to crop the Frames and Logos
- ▶ New Mosaic Preview
- ▶ New OSD for the Preview (numerous information)
- ▶ Video output (CVBS, YPbPr, 3G-SDI)

## Key Features

- 10 Seamless inputs
- 2 outputs (Program and Preview)
- 16 input plugs available (4 x DVI-D, 4 x HDMI, 4 x Universal Analog & 4 x 3G/HD/SD-SDI)
- Computer formats up to 2K
- All live layers: Fully resizable
- Layer: Pan & Zoom resizing up to 1000%
- Layer: Open/Close animation
- Layer Border (Edge: 1 Color, 1 Width)
- Transitions: Fade (Dissolve), Cut, Wipe and Slide
- All audio inputs can be embedded or de-embedded on all plugs
- Audio breakaway mode
- Audio Top layer mode
- Audio Fast Routing mode
- Audio Delay Compensation
- Balanced stereo audio on all outputs
- 2 S/PDIF inputs and 2 S/PDIF outputs
- Internal test patterns
- Chroma/Luma Key and Titling
- 8 Memory Presets per output
- 8 Full Frames, 8 Logo Memories & 1 animated Logo
- HDCP Compliant
- Mosaic Preview mode: 1 live image and 9 images refreshed as fast as possible or 10 images refreshed as fast as possible

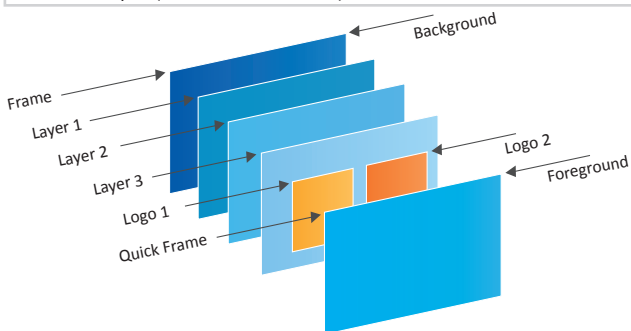
## To Control Saphyr

- ▶ RCS<sup>2</sup>: Remote Control Software
- ▶ RK-350: Remote Keypad
- ▶ ORC50: Remote Controller Orchestra & Orchestra<sup>2</sup> (available in first semester 2014)
- ▶ VRC300: High-End Remote Controller Vertige (available in first semester 2014)
- ▶ Crestron's Modules: Serie2 & Serie3 (available in November 2013)\*
- ▶ AMX's Modules: Available in December 2013\*

\*Available on [www.analogway.com](http://www.analogway.com)

## Operating modes

- 2 operating modes: Mixer and Native Matrix modes
- Seamless switching with full Preview in Mixer mode with 1 layer in Preview
- Seamless switching in Native Matrix mode
- 1 Title on Live Background in Mixer or Native Matrix mode
- 2 layers on Live Background in Mixer mode
- 3 layers on Still Background in Mixer mode
- 1 Title + 1 layer on Still Background in Mixer or Native Matrix mode
- 1 layer on Still Background in Mixer or Native Matrix mode
- 1 layer on Live Background in Mixer or Native Matrix mode

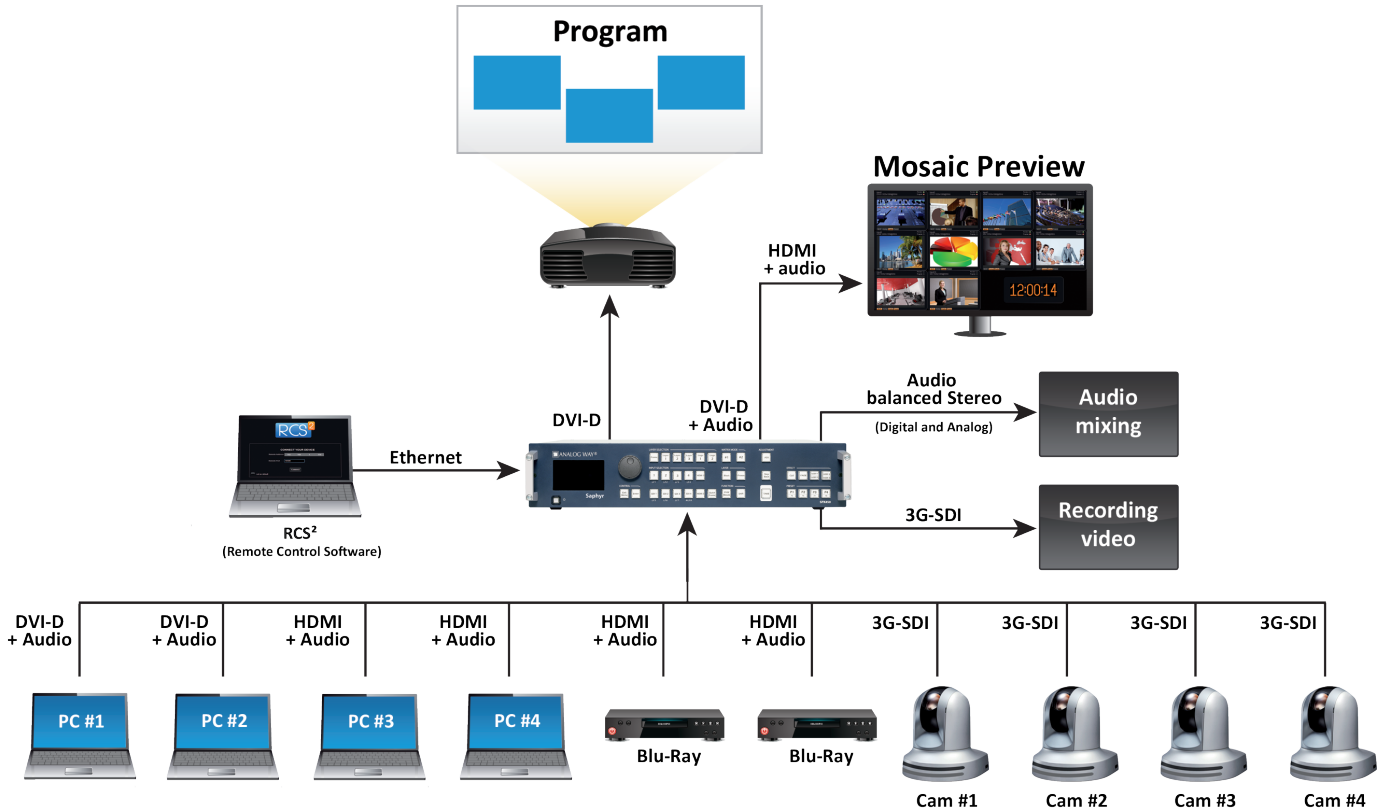


The Quick Frame feature instantly allows to display a stored Frame above all layers.

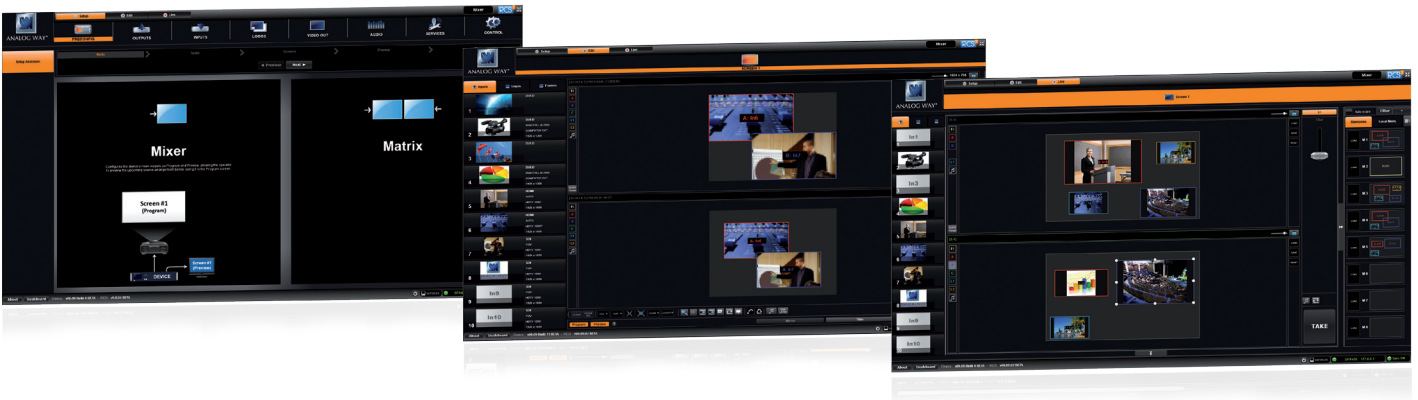


ANALOG WAY®  
Pioneer in Analog, Leader in Digital

## ► Mixer configuration



- The RCS<sup>2</sup> offers a user-friendly graphic interface consisting of 3 independent sections: Setup, Edit and Live. A Preconfig. mode indicates how to easily configure the device step by step. Compatible with recent versions of Windows™ and Apple OS™ (Adobe Air™).
- With customizable snapshots, the intuitive dashboard allows operators to fully prepare their shows and control them live during their events.
- An innovative Sequences mode allows easy organization of presets through drag and drop operation.



### Dimensions:

- D 15.75" x W 17.3" x H 3.46"
- D 400 mm x W 440 mm x H 88 mm

### Weight:

- 6,3 Kgs
- 13.9 lbs

### Power Supply:

100-240 VAC ; 2.5A ; 50/60Hz ; 110W

### Supplied with:

- 1 x Power Supply Cord
- 1 x Ethernet crossover cable
- 1 x Remote Control Software (RCS<sup>2</sup>)\*
- 1 x Set of 6 audio 5-pin screw terminals
- 1 x Rack mount kit
- 1 x User Manual (PDF)\*
- 1 x Quick Start Guide

### Warranty:

3-year warranty on parts and labor back to factory.



\* User Manuals, Quick Start Guides and the RCS<sup>2</sup> are also available on [www.analogway.com](http://www.analogway.com)

**(i)** Specifications subject to change without prior notice

All technical specifications are available on our website