

## AXIS Q7401 Video Encoder

Full-featured video surveillance with outstanding H.264 performance.



- > Superb video quality
- > Multiple H.264 streams
- > Image setting adjustment
- > Intelligent video capabilities
- > Power over Ethernet
- > Audio support
- > Local storage

AXIS Q7401 Video Encoder is a high performance, single channel solution that integrates an analog camera into an IP-based video surveillance system. With outstanding video processing capabilities, AXIS Q7401 delivers superb video quality and significant savings in bandwidth and storage.

AXIS Q7401 offers the highly efficient H.264 video compression, which drastically reduces bandwidth and storage requirements without compromising image quality. Motion JPEG is also supported for increased flexibility.

AXIS Q7401 can deliver multiple, individually configurable video streams simultaneously at full frame rate in all resolutions up to D1 (720x480 in NTSC, 720x576 in PAL). This means that several video streams can be configured with different compression formats, resolutions and frame rates for different needs.

The video encoder also enables users to adjust image settings such as contrast, brightness and saturation to improve images before encoding takes place.

AXIS Q7401 includes intelligent capabilities such as enhanced video motion detection, active tampering alarm and audio detection. The encoder's external inputs and outputs can be connected to devices such as sensors and relays, enabling the system to react to alarms and activate lights or open/close doors.

Support for Power over Ethernet (IEEE802.3af) enables the unit, as well as the analog camera that is connected to it, to receive power through the same cable as for data transmission. This makes for easy installation since no power outlet is needed.

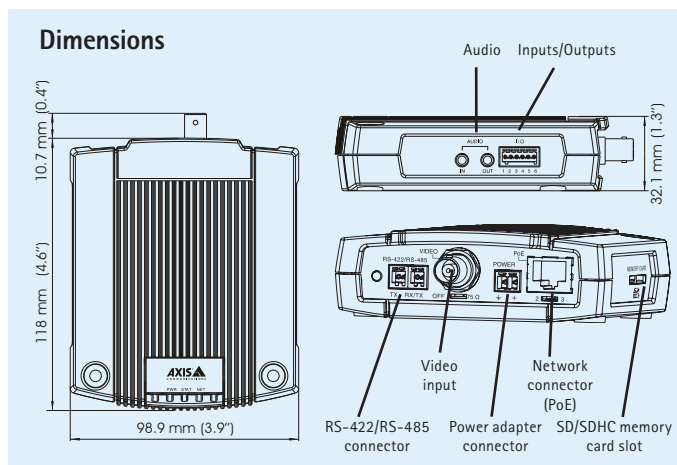
AXIS Q7401 also supports two-way audio and has an SD/SDHC memory card slot for local storage.



## Technical specifications – AXIS Q7401 Video Encoder

Video encoder	
<b>Video compression</b>	H.264 (MPEG-4 Part 10/AVC) Motion JPEG
<b>Resolutions</b>	176x120 to 720x576
<b>Frame rate H.264</b>	30/25 (NTSC/PAL) fps in all resolutions
<b>Frame rate Motion JPEG</b>	30/25 (NTSC/PAL) fps in all resolutions
<b>Video streaming</b>	Multi-stream H.264 and Motion JPEG: 3 simultaneous, individually configured streams in max. resolution at 30/25 fps; more streams if identical or limited in frame rate/resolution Controllable frame rate and bandwidth VBR/CBR H.264
<b>Image settings</b>	Compression, color, brightness, contrast Rotation: 90°, 180°, 270° Aspect ratio correction Mirroring of images Text and image overlay Privacy mask Enhanced deinterlace filter
<b>Pan/Tilt/Zoom</b>	Wide range of analog PTZ cameras supported (drivers available for download at www.axis.com) 100 presets, guard tour, PTZ control queue Supports Windows compatible joysticks
Audio	
<b>Audio streaming</b>	Two way, full duplex
<b>Audio compression</b>	AAC-LC 8 kHz 32 kbit/s, 16 kHz 64 kbit/s G.711 PCM 8 kHz 64 kbit/s G.726 ADPCM 8 kHz 32 or 24 kbit/s
<b>Audio input/output</b>	External microphone input or line input Line level output
Network	
<b>Security</b>	Password protection, IP address filtering, HTTPS encryption, IEEE 802.1X network access control, digest authentication, user access log
<b>Supported protocols</b>	IPv4/v6, HTTP, HTTPS, QoS layer 3 DiffServ, FTP, SMTP, Bonjour, UPnP, SNMPv1/v2c/v3(MIB-II), DNS, DynDNS, NTP, RTSP, RTP, TCP, UDP, IGMP, RTCP, ICMP, DHCP, ARP, SOCKS
System integration	
<b>Application Programming Interface</b>	Open API for software integration, including VAPIX® from Axis Communications available at www.axis.com AXIS Camera Application Platform from Axis Communications; specifications available at www.axis.com Includes the ONVIF specification available at www.onvif.org Support for AXIS Video Hosting System (AVHS) with One-Click Camera connection
<b>Intelligent video</b>	Video motion detection, active tampering alarm, audio detection Support for AXIS Camera Application Platform enabling installation of additional applications
<b>Alarm triggers</b>	Intelligent video, external inputs, video loss, disk full
<b>Alarm events</b>	File upload via FTP, HTTP and email Notification via email, HTTP and TCP External output activation PTZ presets Local storage
<b>Video buffer</b>	64 MB pre- and post-alarm
General	
<b>Casing</b>	Metal casing. Standalone or wall mount
<b>Processor and memory</b>	ARTPEC-3, 128 MB RAM, 128 MB Flash
<b>Power</b>	8-20 V DC, max. 7.2 W or Power over Ethernet IEEE 802.3af Class 2/3
<b>Connectors</b>	Analog composite video BNC input, NTSC/PAL auto-sensing RJ-45 10BaseT/100BaseTX PoE DC terminal block: power in 8-20 V DC, max. 7.2 W or power out 12 V DC, max. 5 W I/O terminal block for four configurable inputs/outputs 3.5 mm mic/line in, 3.5 mm line out RS-485/ RS-422
<b>Local storage</b>	SD/SDHC memory card slot (Card is not included)
<b>Operating conditions</b>	0 °C – 50 °C (32 °F – 122 °F) Humidity 20–80% RH (non-condensing)
<b>Approvals</b>	EN 55022 Class B, EN 61000-3-2, EN 61000-3-3, EN 55024, EN 61000-6-1, EN 61000-6-2, FCC Part 15 Subpart B Class B, ICES-003 Class B, VCCI Class B, C-tick AS/NZS CISPR 22, EN 60950-1 Power supply PS-T: EN 60950-1, CSA, C/US Power supply PS-K: EN 60950-1, UL, cUL
<b>Weight</b>	335 g (0.7 lb.)
<b>Included accessories</b>	Power supply, mounting and connector kits, Installation Guide, CD with installation and management tools, software and User's Manual, 1 Windows decoder user license

More information is available at [www.axis.com](http://www.axis.com)



### Optional accessories

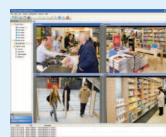
AXIS T8310  
Video Surveillance  
Control Board



Power over Ethernet midspan



AXIS T91A02  
DIN Rail Clip 77mm



For information on AXIS Camera Station and video management software from Axis' Application Development Partners, see [www.axis.com/products/video/software/](http://www.axis.com/products/video/software/)