

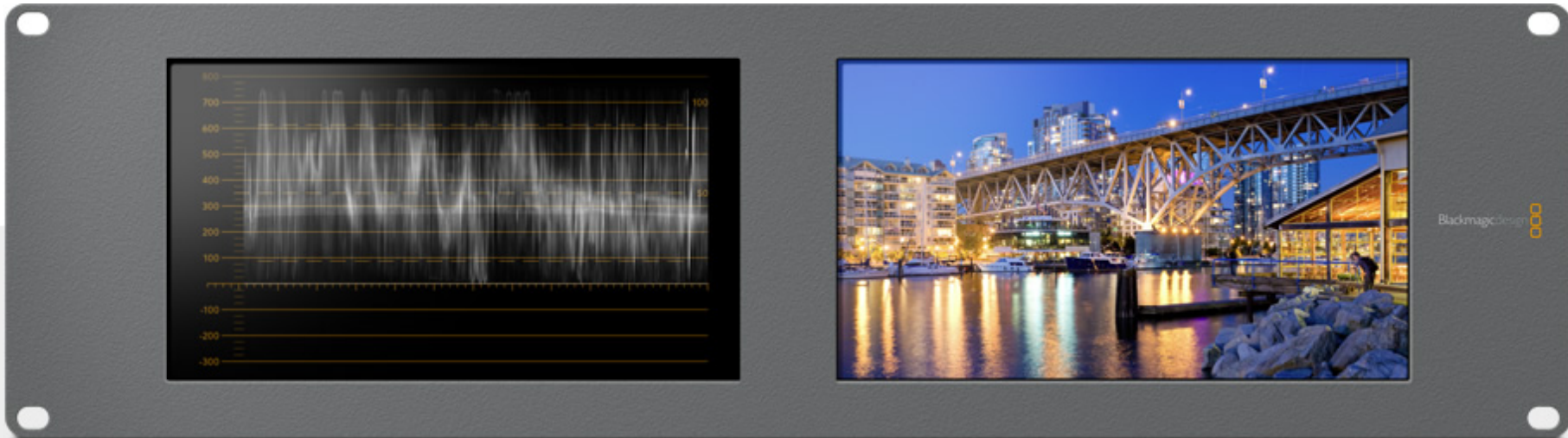


SmartView with Scopes

Broadcast Accurate
Waveform Monitoring

The SmartScope Duo 4K model includes built in waveform monitoring when you need to analyze image quality more accurately than simply looking at the picture! You get seven of the most popular scopes most widely used in broadcast and post production facilities. Scope displays include waveform, vectorscope, RGB parade, YUV parade, histogram, audio phase

and level scopes, and of course you can simply select to view the video itself! Now you don't have to guess what your video and audio levels are, you can monitor them with precision using SmartScope Duo 4K!



[Waveform](#) | [Vectorscope](#) | [Parade](#) | [Audio](#) | [Histogram](#)

[Select Picture](#)

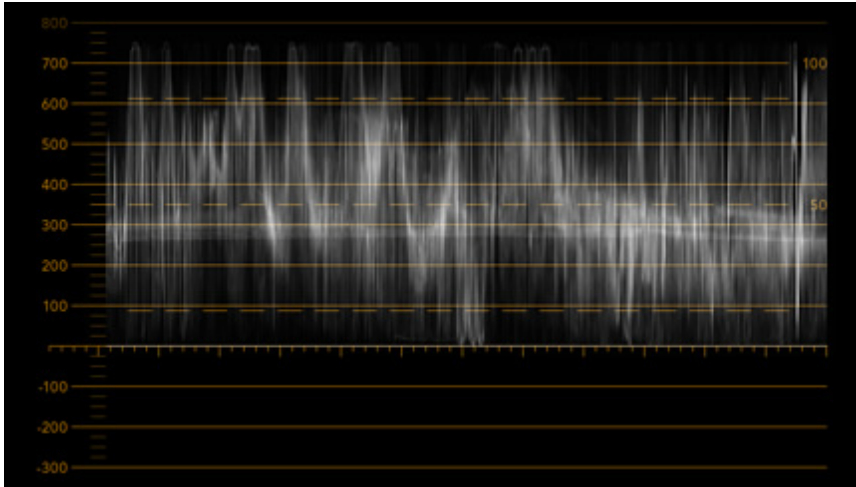


Select Picture

SmartScope Duo 4K gives you the choice to select a scope display or regular video on each of the 8 inch LCD displays. You can even monitor video on one LCD while running a scope such as waveform, histogram or audio on the other screen. This is a powerful combination because you can see the video you're

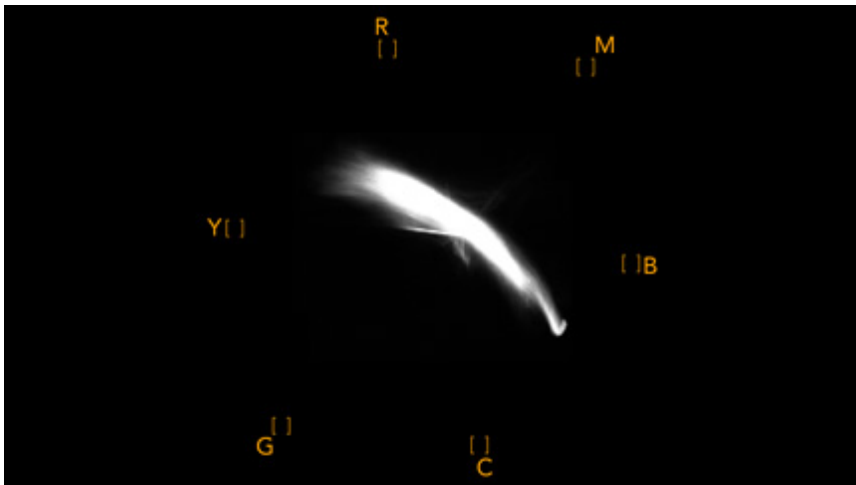


monitoring alongside a real time scope measurement, all on the same SmartScope Duo 4K! You can always rely on SmartScope Duo 4K to give you broadcast accurate monitoring, ensuring your video production has perfect video and audio levels at all times!



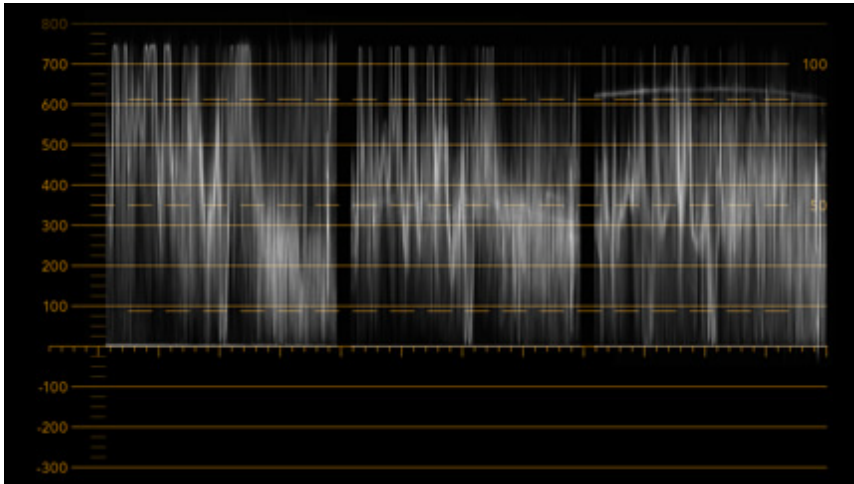
Waveform

Waveform display is perfect for adjusting video levels or matching black background levels when keying! Waveform Display features a luminance waveform of the black and white levels in your video signal. It's perfect for setting the output levels on your broadcast decks and generally monitoring the levels of your production while you edit. Waveform display is a vital tool for color grading and a valuable reference for unifying background levels when keying.



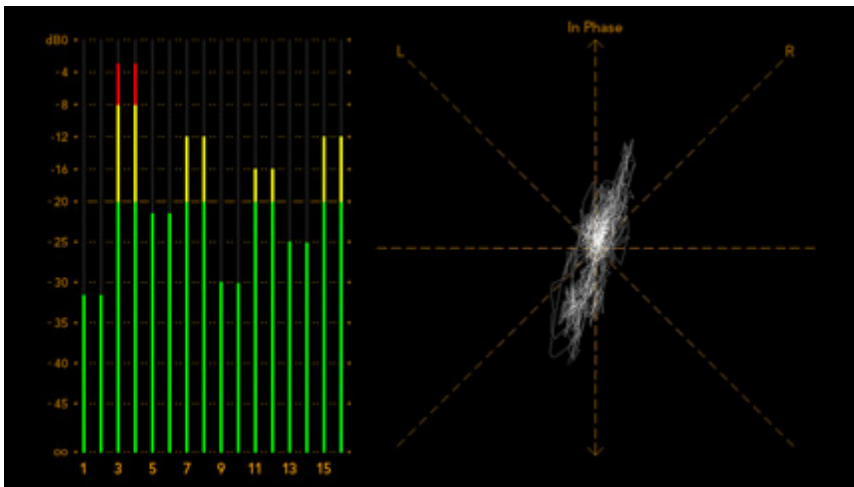
Vectorscope

A vectorscope is the only way to measure colors in video accurately! If you're color correcting video, vectorscope shows when color has been removed or nulled out for accurate white balance. When you need to apply a tint, vectorscope lets you see exactly how much tint you're adding and what color it is. Sometimes monitors cannot be trusted, but with vectorscope you'll always know the exact colors you're working with! You can also easily align hue on decks using a vectorscope!



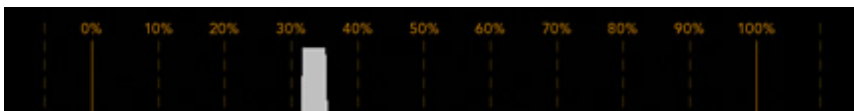
Parade Display

The real time RGB parade waveform view is the ideal scope for accurate color correction. You can see the color balance in 'blacks', 'mids' and 'whites', making it easy to balance colors for perfect looking images. RGB Parade lets you check for illegal colors because any video that drops below the black line, or above the 100% line, is an illegal RGB color! Vectorscope view cannot show illegal video levels, because vectorscope only plots colors and not the luminance component of video. However the RGB parade plots your video as R, G and B and so is the perfect way to keep track of illegal video levels! You can also select YUV parade display which shows the YUV component video as its transmitted down the SDI cable and is perfect for broadcast engineering analysis of SDI signals.

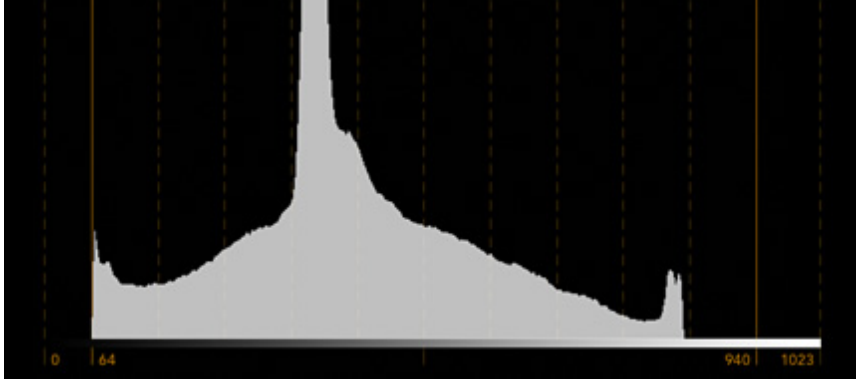


Audio View

Monitor your audio levels with 16 channels of audio metering for viewing every channel in the SDI video connection! The audio scope also includes a stereo phase meter that can be selected to different SDI audio pairs. The stereo phase meter plots left and right audio as an XY scope display so you know exactly what your audio is at all times. It's easy to see audio problems such as clipping, and out of phase audio can be seen as a left or right leaning display. If you don't get a vertical oriented waveform then you know your audio channel balance is out! No audio problem can hide from audio scope display!



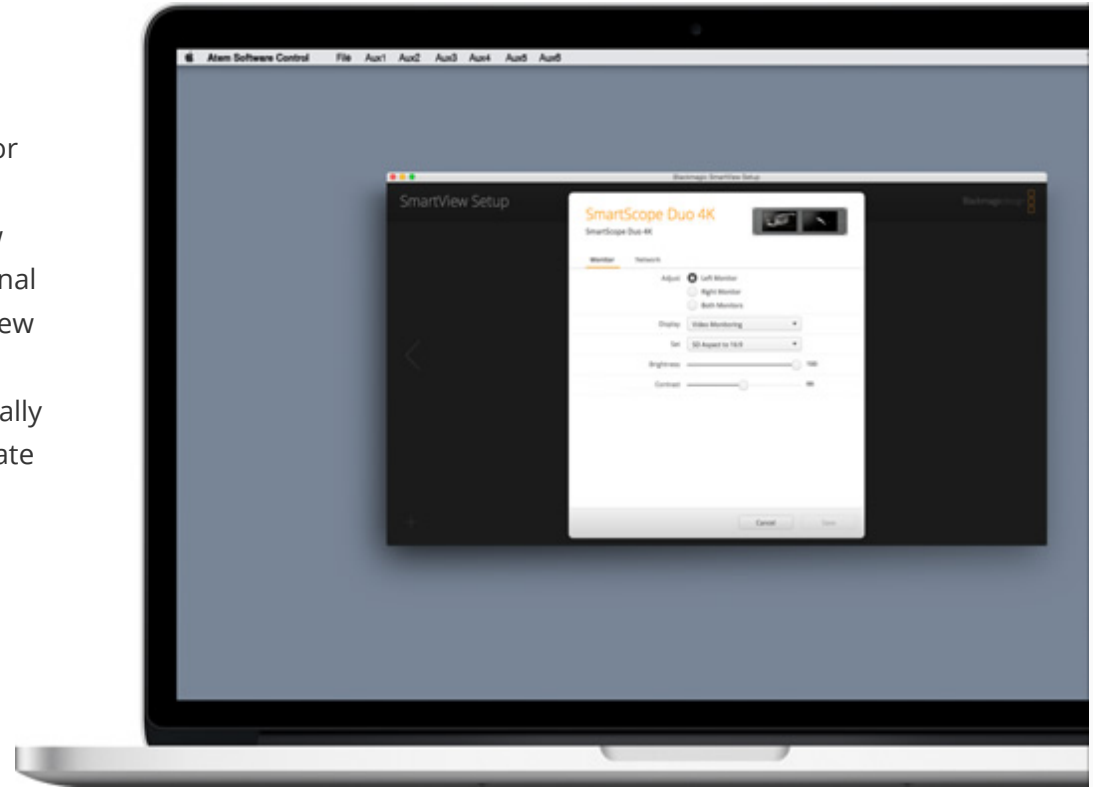
Histogram



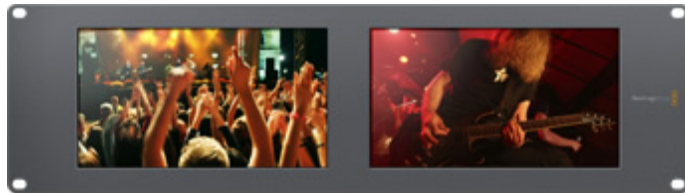
Clipping levels on a live shoot results in loss of detail, which can cause huge problems when you try to adjust 'blacks' or 'whites' in post production. Histogram view lets you see where the pixels are in your video, and how they are distributed from black to white. You can see if your video is clipping and adjust the camera iris and ISO settings to keep all black and white detail in the image. This means you have the full contrast range of video for easy color correction during post production. Histogram will transform your shoots because you can see exactly what you're recording and the colorist who works on your job will benefit from the availability of the full contrast range of the camera!

Software Update

You can download software updates to your SmartView monitor to add new features in the future. You can also download new software to the SmartScope Duo 4K model so you can add new types of scopes as they become available. Programmable internal software means you can get new features, compatibility with new hardware and support for new formats in the future. When downloading updates of the SmartView Utility, it will automatically detect the software of your hardware and then ask you to update if necessary. The software update is then downloaded for you and is simple to perform!



SmartView



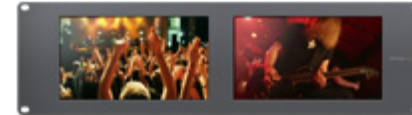
SmartScope Duo 4K

Dual 8" 3 RU SDI/HD-SDI/3G-SDI/6G-SDI monitoring with built in scopes for technical waveform monitoring.



SmartView HD

Large 17 inch full HD 6RU SDI/HD-SDI/3G-SDI monitoring with central software control.



SmartView Duo

Dual 8 inch 3 RU SDI/HD-SDI/3G-SDI monitoring with central software control.