

# Blackmagic SmartView 4K

The world's first full resolution Ultra HD broadcast monitor with 12G-SDI



SmartView 4K is the world's first full resolution rack mount Ultra HD broadcast monitor with 12G-SDI for native display of up to 2160p60. You get a professional broadcast monitor that supports the latest Ultra HD resolutions, plus automatically switches to SD and HD-SDI formats using high quality Teranex processing for a clean and professional display. The machined

metal design includes a built in control panel for using features such as the built in 3D LUTs, H/V delay, blue only, zoom, focus peaking, customizable frame markers and more, either from the front panel or via external Ethernet! SmartView 4K supports VESA mounting so you can install on articulated monitor arms or rack mounting.



## Professional Monitoring

Broadcast quality SD, HD and Ultra HD monitoring!

SmartView 4K is an incredibly high quality monitor that's versatile enough to be used from the largest broadcast facility, mobile live production or on set for feature film production! SmartView 4K works with all SD, HD and Ultra HD video formats and includes both universal AC power as well as 12V DC power inputs so you can use it with a battery or plug it into standard AC mains power. The 6 rack unit sized design and VESA compatibility means it can be installed in racks, outside broadcast vehicles or even mounted on walls and on articulated arms! SmartView 4K is the perfect professional monitor for any broadcast facility, mobile broadcast truck, or even on location fly away kits!



## Elegant Design

Machined metal design that's built to last!

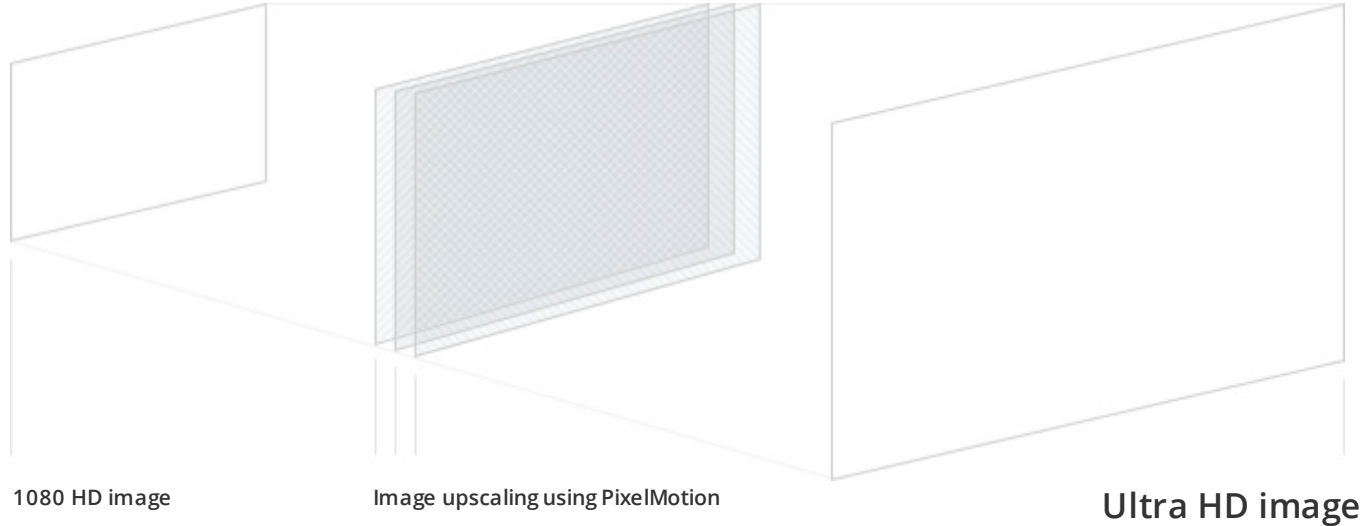
SmartView 4K has a stunning machined metal front panel and a sleek rack mount design with backlit buttons for easy access to all controls! It fits perfectly into standard 19" racks and also has VESA mount points on the back. The professional broadcast connections are side mounted, which makes SmartView 4K thinner so it can be installed in tight locations. Standard 12G-SDI BNC connectors mean the cables won't fall out from vibrations when used in a broadcast truck. With both DC and AC power you get the flexibility of both portable or studio use. When you want to align more than a single monitor or you need remote setup, SmartView 4K can also be controlled via Ethernet.



## Extremely High Resolution

Full resolution allows you to see every pixel in an Ultra HD image!

Now you can install the perfect future proof monitoring solution because SmartView 4K will handle monitoring from all your SD, HD-SDI, 3G-SDI, 6G-SDI and 12G-SDI sources. The SDI inputs automatically detect the input video standard and re-clock instantly. The full resolution Ultra HD monitor allows you to see every single pixel in a 3,840 x 2,160 resolution SDI input, even when running at a faster 60p frame rate! The fast frame rate support is perfect for fast motion such as sports, plus you get a totally future proof design!



**Broadcast Quality**

## See every little detail in massive Ultra HD quality!

SmartView 4K delivers amazing picture quality in an incredibly thin lightweight design. The super bright LCD screen looks great from any viewing angle and, because the controls are all digital, your settings won't change or drift over time. You can even load custom 3D LUTs for monitor calibration and on set viewing! When monitoring SD or HD signals, the built in Teranex processor uses advanced patented and proprietary PixelMotion™ algorithms to automatically de-interlace and scale video up to Ultra HD resolution. That means you get visually transparent, artifact free scaling for the best quality possible and a fluid smooth viewing experience!



## Local and Remote Control

Control all your monitors from a central location

When you're in the middle of a job you can't be fumbling with controls to change settings on your monitor. SmartView 4K gives you both easy front panel control or remote control from a Mac or PC connected over Ethernet. The backlit front panel buttons make them easy to use in dimly lit studio or location environments. The front panel lets you set input selection, adjust brightness, view focus peaking, zoom into the image, select 3D LUTs and use advanced

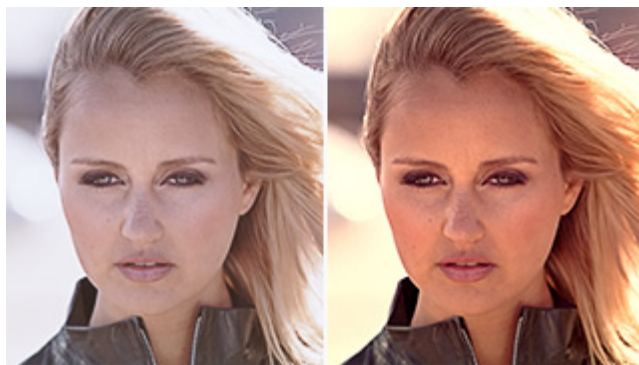
broadcast features such as H/V delay, blue only and frame guides. SmartView 4K comes with Mac and PC software so you can connect via Ethernet and change all settings remotely, which is ideal for large broadcast studios and post houses!



H/V Delay



Blue only



3D Luts



H and V Markers

## Broadcast Features

A true professional broadcast monitor!

SmartView 4K includes features that let you monitor all technical aspects of your images. With the H/V delay feature, you can shift the image to the left and down selectively or at the same time, so you can monitor data and information in the SDI blanking. Now it's easy to keep track of normally hidden information such as embedded audio data, subtitles, VITC and other information stored off the edges of the SDI image. The blue only feature lets you check hue and image noise. Professional 3D LUTs are supported so you can change between log and linear gamma, or load monitor calibration LUTs, and when aligning elements, the customizable frame guides are ideal!





## Advanced Connections

Connect via regular SDI or via optional optical fiber!

SmartView 4K includes two multi rate 12G-SDI inputs so you can select between 2 different sources at the push of a button! 12G-SDI is the latest and most advanced SDI connection available and is compatible with all your SDI equipment ranging from SD and HD all the way up to Ultra HD 2160p60! With fast switching, changing formats is nearly instantaneous. There is also a SMPTE compatible optical fiber SDI socket so you can add an optical fiber SDI module and then connect via optical fiber direct to the monitor! You also get loop through Ethernet, AC and DC power inputs, tally input connector, USB port for software updates and loop 12G-SDI loop output.

## Ethernet Remote Control

Change all settings from your Mac or Windows computer!

Larger facilities and installations often need to set up multiple racks with many monitors spread around, or even walls of monitors for master control and camera monitoring. SmartView 4K makes this simple because you can connect to your Ethernet network and run the Mac or Windows software to control all your monitors. SmartView 4K has loop through Ethernet so you don't need to use expensive Ethernet switches and you get the speed to upload 3D LUTs quickly. You can even copy and paste settings between monitors to make matching displays and setup fast. With network control, you'll never have to climb on desks or studio consoles to adjust your monitors again!

## SmartView 4K



## **SmartView 4K**

Elegant machined metal full resolution Ultra HD broadcast monitor with 12G-SDI for SD, HD and Ultra HD support up to 2160p60.