



) EYE-LCD-2160 SquareTile

eyevis LCD Series

) DISPLAY CHARACTERISTICS

-) 21.6-inch square LCD screen
-) Ultra super narrow bezel design for seamless tiled applications
-) Direct-LED illumination for best image uniformity
-) High resolution and perfect viewing angles
-) Robust but light-weight aluminium metal housing
-) Daisy Chain for signal (DVI) and control (RS232)
-) Silent ventilation system
-) Different installation possibilities
-) Modular wall mount bracket for easy installation
-) Ideal for creative digital signage applications

) TECHNICAL SPECIFICATIONS

) Features

Bezel	5.9 mm Active to Active
Aspect Ratio	1:1
Backlight	Direct-LED
Connectivity	DVI in/out, RS232 in/out

) General

Resolution	960 x 960 pixel
Pixel pitch	0.403(H) x 0.403(V) mm
Active area	387.36 x 387.36 mm
No. of Color	16.7M colors

) Optical Characteristic

Brightness	450 cd/m ² typ.
Contrast	TBD typ.
Viewing Angle	89/89/89/89 degree
Response Time	TBD ms (G-G)
Gamma	2.2
Color Temp.	10000 K
Color gamut	72 %

) Mechanical Size

Outline	393.26(W) x 393.26(H) x 100(D) mm
Weight	7.5 kgs

) PRODUCT PICTURES



Front View



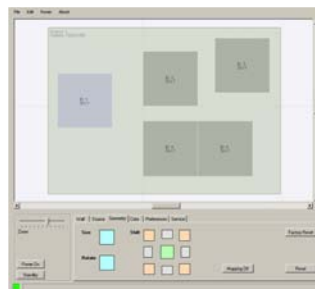
Back View



Side View

) ANY CONFIGURATION POSSIBLE

-) High quality image processing
-) Integrated scaler & matrix for easy image alignment
-) Image manipulation for any mounting position (Shift / Flip / Rotate / Mirror)
-) Setup and adjustment with same software platform as omniSHAPES
-) Easy source assignment
-) Flexible image manipulation of each single SquareTile



eyevis GmbH

Hundsschleestr. 23 • 72766 Reutlingen • Germany
 Phone: + 49 (0) 7121 43303 - 0 • Fax: + 49 (0) 7121 43303 - 22
 www.eyevis.de • info@eyevis.de

As at: 27.03.2012/V0.3 • Subject to change!

All trademarks and registered trademarks are the property of their respective owners. Copyright © 2012 eyevis GmbH. All rights reserved.