



EYE-LCD-5500-USN-LD-FX

55" VIDEO WALL LCD WITH
DIRECT-LED BACKLIGHT



) PRODUCT DESCRIPTION

With the EYE-LCD-5500-USN-LD-FX, eyevis presents the latest super narrow bezel LCD display for video wall applications from the EYE-LCD series, especially designed for fixed video wall installations. This new display type provides full HD resolution (1920 × 1080 px) on a 55" (139 cm) screen. High definition image quality, high contrast, best brightness and the super narrow bezel are the main features of the new display type. Thanks to their super narrow bezels, the gap inbetween two displays in a video wall could once again be reduced to a minimum of only 5.3mm.



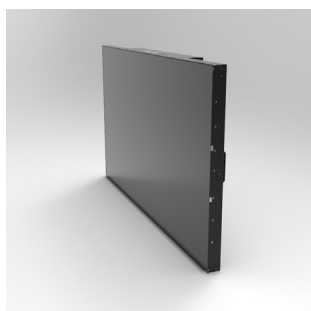
) THE ADVANTAGES AT A GLANCE

- 55" screen diagonal (ca. 139 cm)
- Full HD resolution (1,920 × 1,080 Pixel)
- Gap Active-to-Active: 5.3 mm
- Direct LED backlight for uniform illumination and brilliant colours
- Optimised power consumption
- Internal matrix function
- Robust metal design for demanding applications

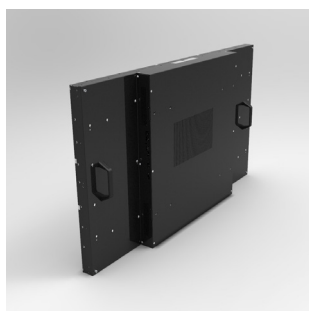
) DIRECT LED BACKLIGHT

Previous super narrow bezel displays with conventional CCFL backlight technology are likely to show hot spot effects in the centre of the displays because the edges are less illuminated than the rest of the screen. In order to achieve a uniform illumination of the entire screen, eyevis provides its new EYE-LCD-5500-USN-LD-FX with direct-LED backlight. Thanks to the new backlight illumination technology, the display provides very homogeneous images.

) IMAGES



Front View

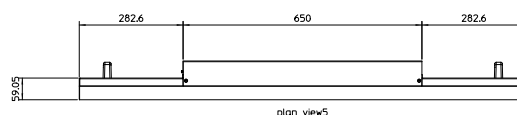
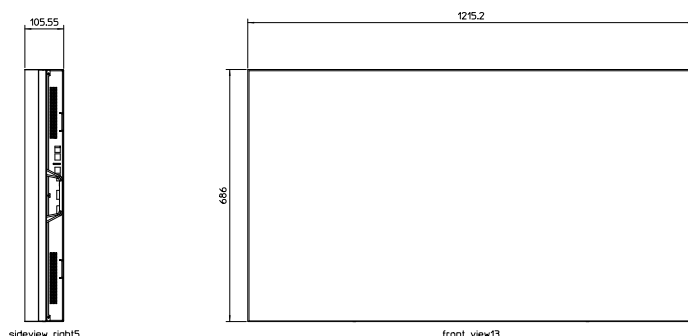


Rear View



Application

) DRAWING



Unit: mm

EYE-LCD-5500-USN-LD-FX

55" VIDEO WALL LCD WITH DIRECT-LED BACKLIGHT

) TECHNICAL SPECIFICATION

LCD PANEL

Model Name:	EYE-LCD-5500-USN-LD-FX
Panel Type:	LCD IPS-Panel
Installation:	Landscape/Portrait
Screen Size:	55" (ca.139 cm)
Active Display Area:	1.210 × 680 mm (W × H)
Display Resolution:	1,920 × 1,080 Pixel (full HD)
Colours:	1.07G (10-Bit Colour Processing)
Brightness:	500 cd/m ²
Contrast:	1400 : 1 (dynamic contrast 500,000 : 1)
Viewing Angle:	178° H/V
Response Time:	10 ms
Backlight:	Direct LED
Backlight Life-Time:	> 40,000 hrs (Luminance < 50%)
System MTBF:	> 40,000 hrs
24/7 Operation [®] :	Yes (recommended operation: 20/7)

CONNECTORS & CONTROL

Inputs:	Video, Y/C, DVI-I (digital/analog), HDMI, DisplayPort, RS232
Outputs:	DisplayPort
Internal Matrix:	Yes

MECHANICAL

Display:	1215.2 × 686 × 105.5 mm (W × H × D)
Bezel Width:	1.9 mm bottom/right, 3.4 mm top/left (subject to vary within mechanical tolerances of the panels)
Weight:	34 kgs
VESA Mount:	400 × 600

OPERATING CONDITIONS

Power Consumption:	ca. 210 Watt (max.)
Input Voltage:	100V – 240V AC, 50/60 Hz
Operating Temperature:	typ. 0 - 40 °C
Humidity:	typ. 10-80 % RH (no condensation)

OTHER

Handling:	Pair of handles for simple and safe transport and installation
Ventilation:	Low noise fans

OPTIONS

Front-Service Option:	Full front-service Landscape/Portrait video wall mount
Touch:	Infrared touch overlay for video walls up to 200 inch diagonal with up to 32 simultaneous touch points

) APPLICATIONS

- control rooms (e.g. for video surveillance)
- boardrooms
- show rooms
- conference rooms
- POS/POI
- trade fairs / events
- trading rooms

) FEATURES

- almost unlimited number of cascable displays
- „frameless“ design, minimal gaps
- optimized for video walls
- robust metal design
- best image quality
- uniform images thanks to direct LED backlight

) FRONT-SERVICE OPTION



EYE-WHLCD-FS-LAND (for Landscape Installation)



EYE-WHLCD-FS-POR (for Portrait Installation)

[®]Electronic components designed for 24/7 operation. Prolonged display of static image contents may affect the display quality of the device. These effects do not affect the functionality of the device and are therefore not considered as defects in terms of our warranty conditions.