

HD/SD Portable Video Switcher  
**HVS-300HS/300RPS**  
"1M/E HANABI Portable"

**FOR.A**<sup>®</sup>  
INNOVATIONS IN VIDEO  
and AUDIO TECHNOLOGY



HD/SD Portable Video Switcher

**HVS-300HS/300RPS**

"1M/E HANABI Portable"



# HVS-300HS: The New Standard in Small HD/SD Switchers!

Unrivalled Features, Unequaled Cost Performance

The HVS-300HS and the HVS-300RPS is the newest addition to FOR-A's popular Hanabi series and represents one of the most powerful, compact, broadcast level switchers on the market.

Although small, the HVS-300HS 1 Rack Unit main frame (HVS-300RPS is 2U) is packed with features including frame synchronizing and re-sizing engine on every channel which allow any Standard Definition equipment to be used in full HD mode. It also has plenty of wipe patterns including 2D and 3D DVE transitions. The HVS-300 series also has keyer with chroma key, DSK, dual Picture-in-Picture, 16-channel Multi Viewer, Still Stores and much more.

It is perfectly suited for a wide-range of applications including studio, live event, sports, Flypacks, ENG/SNG OB vehicles, House of Worship, news, live staging and corporate productions.



HVS-300HS + HVS-300U

# 4 Control Panels

The HVS-300HS has 4 types (HVS-300RPS has 3 types) of control units. These control units are available to suit any working environment and provide a level of redundancy to support any operator or engineers production needs.

## HVS-300U: Operation Unit



The HVS-300U control unit is a traditional type of control panel with large bus buttons, AUX buttons, a fader, and function buttons laid out to maximize ease of operation.

## HVS-30FP: Front Control Panel



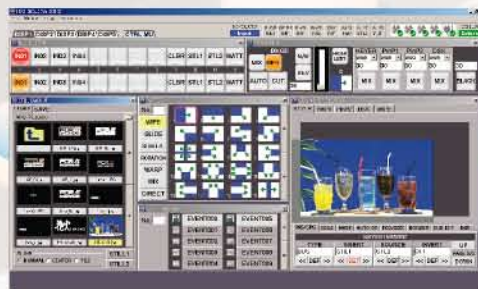
The HVS-30FP, is a simple and compact HVS-300HS control unit to fit on the front of the main unit and can be installed into a 1U rack space.  
(HVS-30FP cannot be installed in HVS-300RPS.)

## HVS-30RU: Remote Control Unit



The HVS-30RU remote control unit can be used for remote switching or as an AUX remote control.

## HVS-30GUI: Remote Control Software



The HVS-300HS and HVS-300RPS also can be controlled via the remote control software graphical user interface the HVS-30GUI. The HVS-30GUI can be installed on any PC and will provide users with full remote switcher control over LAN.



# The HVS-300HS and the HVS-300RPS Main Features

Whether you work in HD, SD or a combination of both, there are enough inputs and outputs to suit any of your production needs.

## Compact Main Frame

The HVS-300HS incorporates up to 12 inputs and 8 outputs, Frame Synchronizer, Re-sizing Engine, Still Store, Keyer with Chroma Key, DSK, and a wide array of other functions in a compact EIA 1U size.



## Redundant Power Model: HVS-300RPS

The HVS-300RPS model has in addition a redundant power supply installed in a 2U frame. All input, output, system features and additional I/O options are same the HVS-300HS 1U model.



## Input/Output

4 HD/SD-SDI inputs and outputs are provided in the standard configuration. This includes 2 PGM outputs and 2 AUX outputs. With optional I/O cards we can provide up to a maximum 12 Inputs and 8 Outputs, including analog component, analog composite, DVI, and RGB.

### Supported Formats:

1080/60i, 1080/59.94i, 1080/50i, 1080/24PsF, 1080/23.98PsF  
720/60p, 720/59.94p, 720/50p, 525/60 (NTSC), 625/50 (PAL)

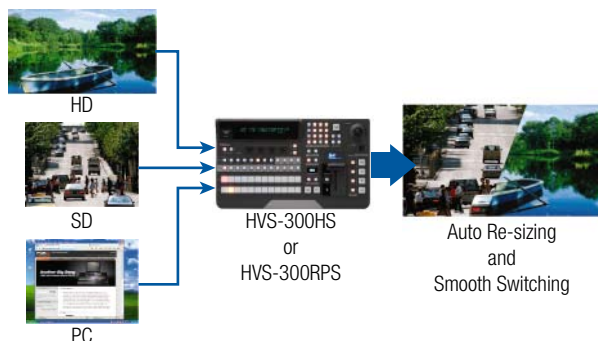
## Frame Synchronizers

Each input is fitted with its own frame synchronizer which can be turned on or off for minimum delay.

This also allows any sources without genlock capability (such as consumer devices or computers) to be used. When "genlocking" everything, we provide Black Burst or Tri-level sync output. Proc Amp features are also provided for each input.

## Up-converter/Re-sizing Engine

Up-converter/ re-sizing engine is provided on every input. Should you need to use Standard Definition equipment in HD mode, just plug in. This is ideal for users making the transition to HD production.



## Interfaces

The HVS-300HS and the HVS-300RPS also supports many types of interfacing, such as RS-422, Editor, ARCNET, Ethernet, GPI and Tally.

## Keyer/DSK

One Keyer and one DSK are as standard features for the HVS-300HS and the HVS-300RPS. The Keyer provides an easy to use broadcast level Chroma Key. Both Keyer and DSK are equipped with a 2D DVE for positioning graphics or over the shoulder shots.

## Transitions/DVEs

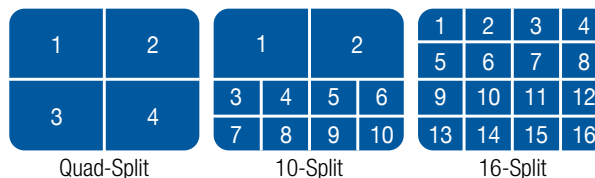
For transitions the switcher offer CUT, MIX and over 100 wipe patterns, plus 56 2D/3D-DVE Wipe patterns. It also has separate transitions for the keyers and picture in picture functions. And these effects are can be modified from standard patterns.

## 2 Still Stores

The switcher also comes with 2 dedicated still stores, which can upload or download images (JPEG and TARGA) via the USB port. The USB port also makes up&down-loading user settings quick and easily.

## 4/10/16 Split Multi Viewer

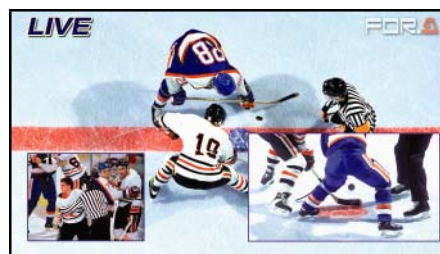
One of the most popular new features of our switcher is its built in 16-channel multi viewer, a standard feature of the HVS-300HS and the HVS-300RPS. You can freely assign any input or output (program or preview) to the multi viewer, using either its 4, 10 or 16 channel display. The multi viewer also features tally and titling functions so that users always know which signals are going to each output.



## 2 Picture-in-Picture

For box shots, over the shoulder shots and graphic display, there are two dedicated Picture-in-Picture channels that can display a compressed image of any input from 1% to 25%. These are in addition to the keyer DVEs. Users can also Expand, Squeeze, Crop and add Borders with the dual Picture-in-Picture mode.

These effects can be assigned to user buttons so that fade-ins, fade-outs, slide-ins and slide-outs for Picture-in-Picture transitions can be operated by single button operations.



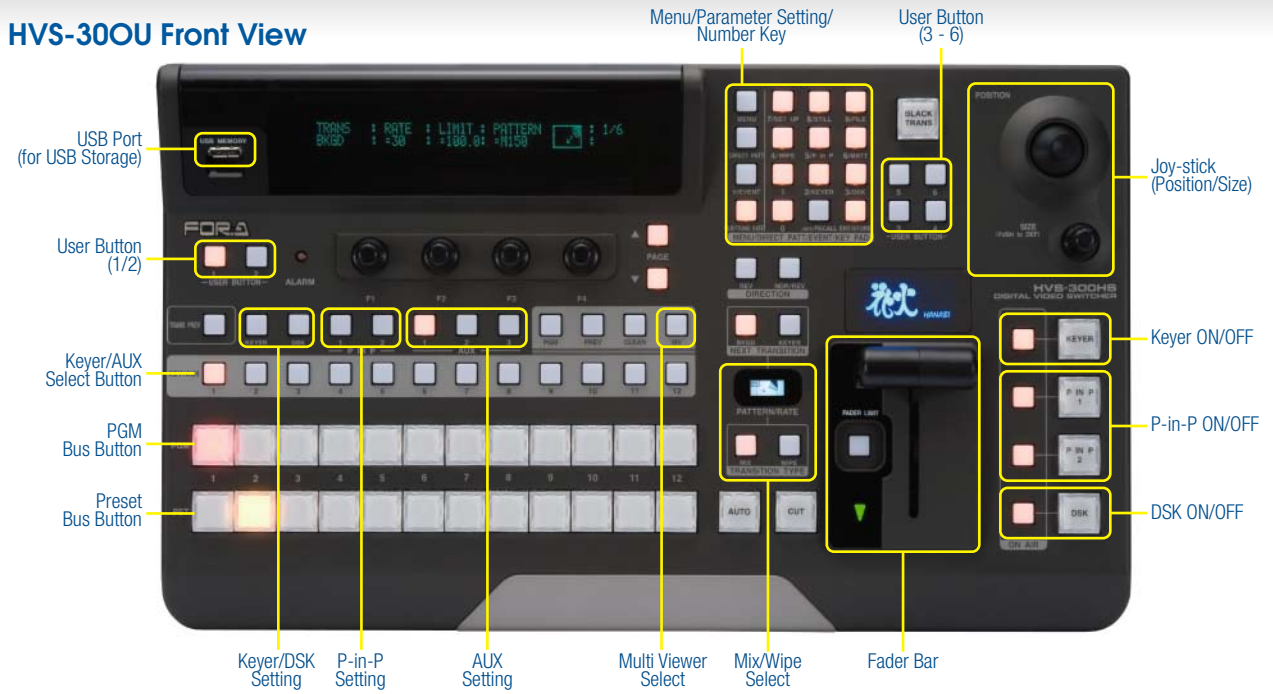
## OSD (On-screen Display)



OSD image

OSD is provided for access to controls from every control panels to allow switcher settings to be displayed on a preview output so that configurations can easily be modified and status verified at a glance.

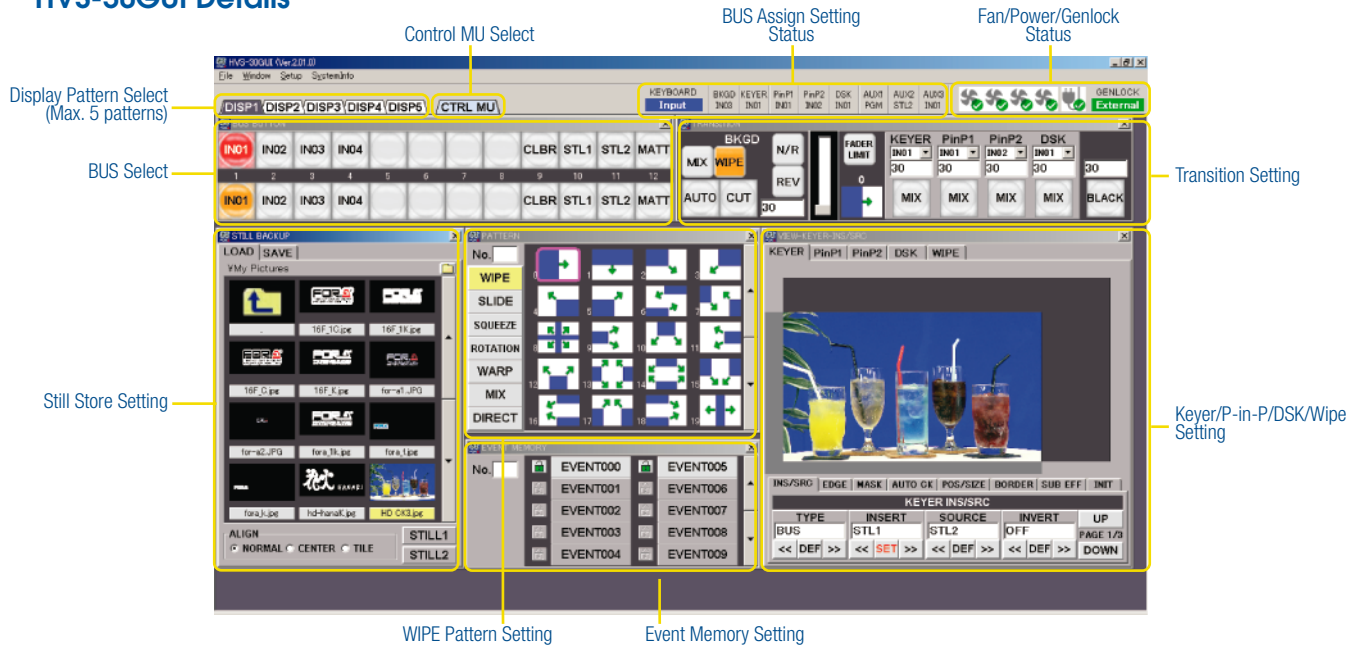
### HVS-300U Front View



### HVS-30FP and HVS-30RU Front View

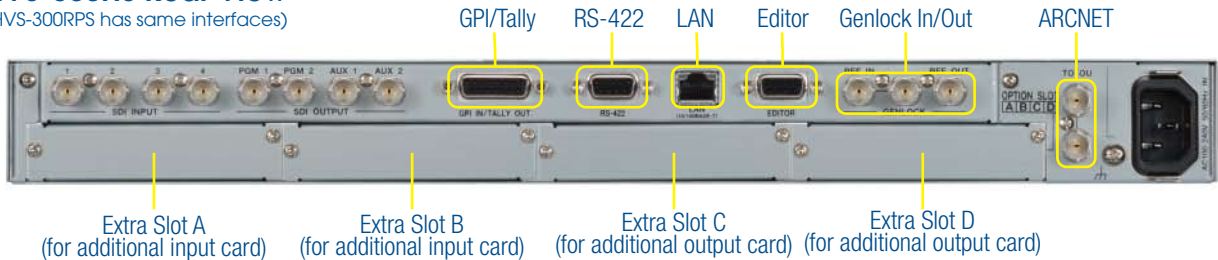


### HVS-30GUI Details



### HVS-300HS Rear View

(HVS-300RPS has same interfaces)



# Options

The HVS-300HS/300RPS can have up to 12 inputs and 8 outputs when optional I/O cards are installed. There are four extra slots available, 2 for inputs and 2 for outputs. These can be used with optional I/O cards for HD/SD-SDI, Analog Component, Analog Composite, DVI and Analog RGB signals.

## HVS-30HSDI HD/SD-SDI Input Card



The optional HD/SD-SDI input card provides 4 extra inputs.

## HVS-30HSDO HD/SD-SDI Output Card



The optional HD/SD-SDI output card provides 2 additional outputs. The HD/SD-SDI output cards have a 3rd down-converted SD output as well.

## HVS-30HSAI Analog Video Input Card



The analog input card provides 2 analog inputs. These can be set up as composite, component or one of each.

## HVS-30HSAO Analog Video Output Card



The analog output card provides 2 analog outputs. These can be set up as composite, component or one of each. Of course the composite output is down converted in HD mode.

## HVS-30PCIN PC (DVI/VGA) Input Card



For computer-based applications we have an input card with one DVI-D and one VGA connector with resolutions ranging from VGA to WUXGA.

### Input Resolutions:

HD mode	
1080i/PsF	1024 x 768 (XGA), 1280 x 1024 (SXGA), 1600 x 1200 (UXGA), 1280 x 768 (WXGA), 1680 x 1050 (WSXGA), 1920 x 1200 (WUXGA)
720p	1024 x 768 (XGA), 1280 x 1024 (SXGA), 1280 x 768 (WXGA)
SD mode	
	640 x 480 (VGA), 800 x 600 (SVGA), 1024 x 768 (XGA)

Not supported of HDCP

### Input Card Configuration

Input Port 1	Input Port 2	Number of inputs
-	-	HD/SD-SDI x 4 (standard)
HVS-30HSAI	-	HD/SD-SDI x 4, Analog x 2
HVS-30HSAI	HVS-30HSAI	HD/SD-SDI x 4, Analog x 4
HVS-30HSAI	HVS-30PCIN	HD/SD-SDI x 4, Analog x 2, PC x 2
HVS-30PCIN	-	HD/SD-SDI x 4, PC x 2
HVS-30PCIN	HVS-30PCIN	HD/SD-SDI x 4, PC x 4
HVS-30HSDI	-	HD/SD-SDI x 8
HVS-30HSDI	HVS-30HSAI	HD/SD-SDI x 8, Analog x 2
HVS-30HSDI	HVS-30PCIN	HD/SD-SDI x 8, PC x 2
HVS-30HSDI	HVS-30HSDI	HD/SD-SDI x 12

## HVS-AUX8

## HVS-AUX16 AUX Remote Panel



We have optional AUX remote panels with either 8 or 16 buttons. The 8-button panel is half a rack wide, and the 16-button panel is of a full rack width. One can daisy-chain multiple AUX remote control units via ARCNET. Furthermore, a cable extension kit is available so that the button panel can be detached from the main unit.

## HVS-30ED Editor Interface Software

Interface software to connect with an Editor: It is BVS-3000 and GVG-100 Protocol compliant.

## HVS-30PCO PC (DVI/VGA) Output Card



For computer-based applications we have an output card with one DVI-D and one VGA connector with resolutions ranging from VGA to WUXGA.

### Output Resolutions:

HD mode	
1080i/PsF	1280 x 1024 (SXGA), 1600 x 1200 (UXGA), 1680 x 1050 (WSXGA), 1920 x 1200 (WUXGA)
720p	1280 x 1024 (SXGA), 1280 x 768 (WXGA)
SD mode	
	800 x 600 (SVGA)

Not supported of HDCP

### Output Card Configuration

Output Port 1	Output Port 2	Number of outputs
-	-	HD/SD-SDI x 4 (standard)
HVS-30HSAO	-	HD/SD-SDI x 4, Analog x 2
HVS-30HSAO	HVS-30HSAO	HD/SD-SDI x 4, Analog x 4
HVS-30HSAO	HVS-30PCO	HD/SD-SDI x 4, Analog x 2, PC x 2
HVS-30PCO	-	HD/SD-SDI x 4, PC x 2
HVS-30PCO	HVS-30PCO	HD/SD-SDI x 4, PC x 4
HVS-30HSDO	-	HD/SD-SDI x 6 (+SD-SDI x 1)
HVS-30HSDO	HVS-30HSAO	HD/SD-SDI x 6 (+SD-SDI x 1), Analog x 2
HVS-30HSDO	HVS-30PCO	HD/SD-SDI x 6 (+SD-SDI x 1), PC x 2
HVS-30HSDO	HVS-30HSDO	HD/SD-SDI x 8 (+SD-SDI x 2)

## HVS-TALOC20/32

## HVS-TALR20/32 Tally Interface Unit

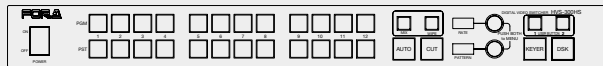


Tally Interface with power supply: There are 4 types available for both Open Collector and Relay systems with choices of 20 or 32 contacts respectively.

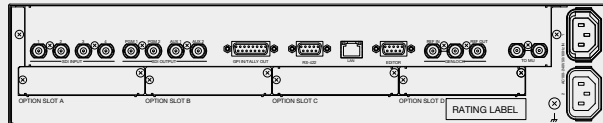
- HVS-TALOC20: Open Collector system with 20 contacts
- HVS-TALOC32: Open Collector system with 32 contacts
- HVS-TALR20: Relay system with 20 contacts
- HVS-TALR32: Relay system with 32 contacts

# Dimensions

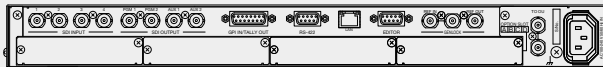
HVS-30FP/30RU Front View



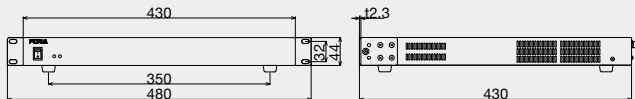
HVS-300RPS Rear View



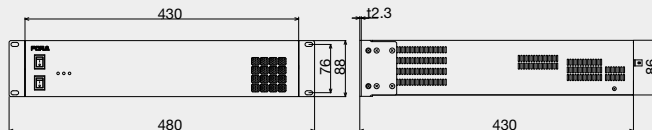
HVS-300HS Rear View



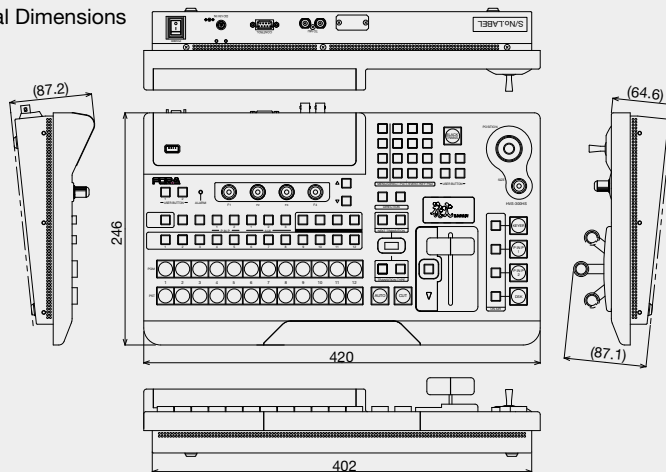
HVS-300HS External Dimensions



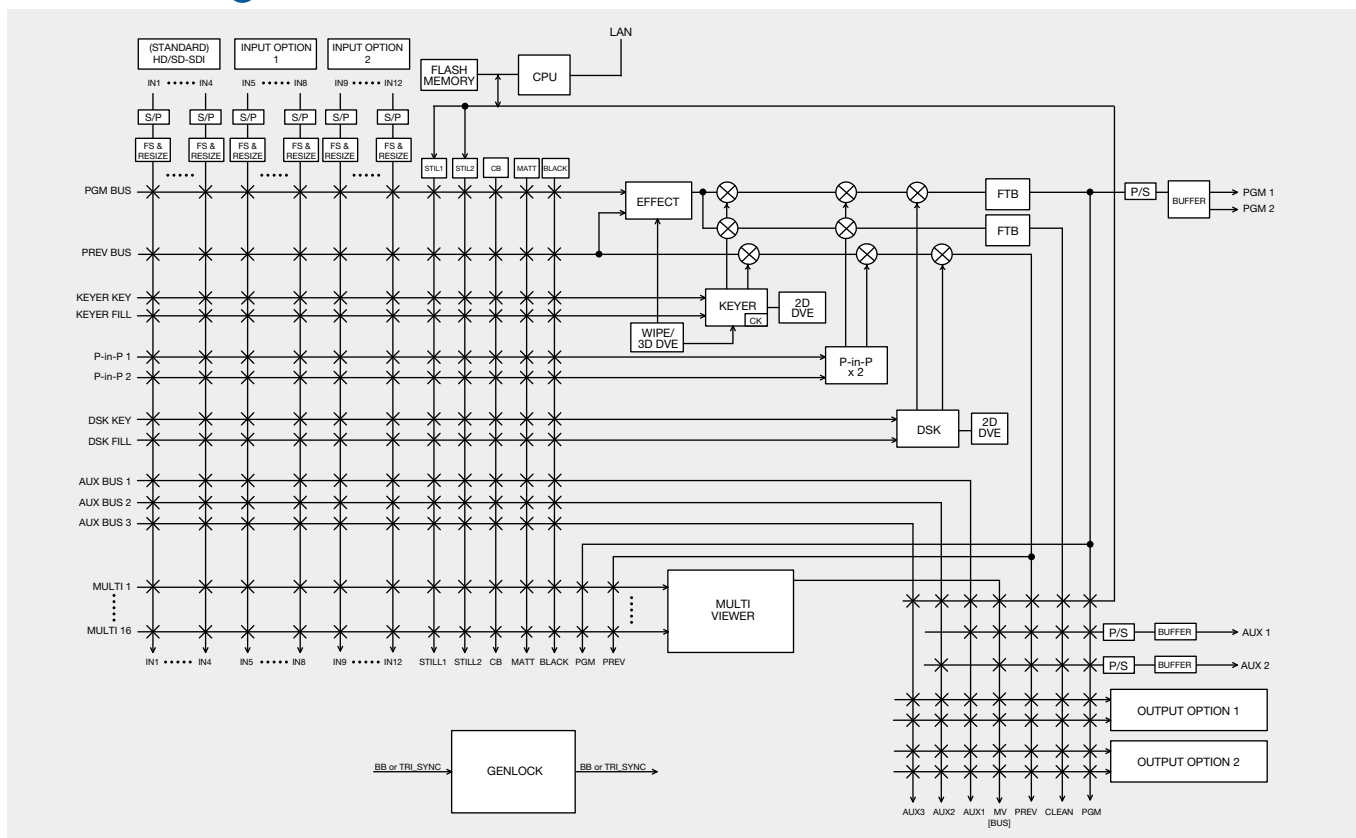
HVS-300RPS External Dimensions



HVS-300U External Dimensions



# Block Diagram





## Specifications

	HD mode	SD mode
Standard	1080/60i, 1080/59.94i, 1080/50i, 1080/24PsF, 1080/23.98PsF, 720/60p, 720/59.94p, 720/50p (selectable at menu)	525/60 (NTSC), 625/50 (PAL) (selectable at menu)
Processing	4:2:2:4, 10-bit, digital component	
Quantization	Y: 10-bit, C: 10-bit, KEY: 10-bit	
Video Input	HD-SDI: 1.485Gbps or 1.485/1.001Gbps, or SD-SDI: 270Mbps, 75Ω, 4 inputs, BNC	SD-SDI: 270Mbps, 75Ω, 4 inputs, BNC
Video Input (Option)	HD-SDI: 1.485Gbps or 1.485/1.001Gbps, or SD-SDI: 270Mbps, 75Ω, BNC	SD-SDI: 270Mbps, 75Ω, BNC
	DVI: DVI-D connector, Resolution (XGA - WUXGA) (HDCP incompatible)	DVI: DVI-D connector, Resolution (VGA - XGA) (HDCP Incompatible)
	VGA: 15-pin D-sub (female), Resolution (XGA - WUXGA), R/G/B: 0.7Vp-p, H/V: TTL	VGA: 15-pin D-sub (female), Resolution (VGA - XGA), R/G/B: 0.7Vp-p, H/V: TTL
	HD analog component: Y: 1.0Vp-p, PB/PR: 0.7Vp-p, 75Ω, BNC	SD Analog component: Y: 1.0Vp-p, R-Y/B-Y: 0.7Vp-p, 75Ω, BNC
	SD analog component: Y: 1.0Vp-p, R-Y/B-Y: 0.7Vp-p, 75Ω, BNC	
	Analog composite: 1.0Vp-p, 75Ω, BNC	Analog composite: 1.0Vp-p, 75Ω, BNC
Reference Input	BB: NTSC: 0.429Vp-p/PAL: 0.45Vp-p, or Tri-level sync: ±0.3Vp-p, 75Ω or loopthrough, 1 input, BNC	BB: NTSC: 0.429Vp-p/PAL: 0.45Vp-p, 75Ω or loopthrough, 1 input, BNC
Video Output	HD-SDI: 1.485Gbps or 1.485/1.001Gbps, 75Ω, 4 outputs, BNC (PGM x 2, AUX x 2)	SD-SDI: 270Mbps, 75Ω, 4 outputs, BNC (PGM x 2, AUX x 2)
Video Output (Option)	HD-SDI: 1.485Gbps or 1.485/1.001Gbps, 75Ω, BNC	SD-SDI: 270Mbps, 75Ω, BNC
	HD Analog component: Y: 1.0Vp-p, PB/PR: 0.7Vp-p, 75Ω, BNC	SD Analog component: Y: 1.0Vp-p, R-Y/B-Y: 0.7Vp-p, 75Ω, BNC
	DVI: DVI-D connector, Resolution (SXGA - WUXGA) (HDCP incompatible)	DVI: DVI-D connector, Resolution (SVGA) (HDCP Incompatible)
	VGA: 15-pin D-sub (female), Resolution (SXGA - WUXGA), R/G/B: 0.7Vp-p, H/V: TTL	VGA: 15-pin D-sub (female), Resolution (SVGA), R/G/B: 0.7Vp-p, H/V: TTL
Reference Output	BB: NTSC: 0.429Vp-p/PAL: 0.45Vp-p, or Tri-level sync: ±0.3Vp-p, 75Ω, 1 output, BNC	BB: NTSC: 0.429Vp-p/PAL: 0.45Vp-p, 75Ω, 1 output, BNC
I/O Delay	1H (minimum delay)	
	1 frame - 2 frame + 1H (Using frame synchronizer or Input re-sizing engine)	
	2 frame - 3 frame + 1H (Using frame synchronizer or Input re-sizing engine + DVE)	
	3 frame - 4 frame + 1H (Using frame synchronizer or Input re-sizing engine + Output re-sizing engine + DVE)	
Multi Viewer	Screen display type: Quad, 10-Split, 16-Split	
	Title Display (up to 8 alphanumeric characters for each input), On-Air tally indication (red/green)	
	Delay: 1 frame relative to PGM output	
Backup Device	USB memory device	
Interfaces	EDITOR: 1 port, 9-pin D-sub (female)	
	RS-422: 1 port, 9-pin D-sub (female)	
	GPI IN/TALLY: 1 port, 15-pin D-sub (female) (12 in/outputs)	
	ARCNET: 1 port, 75Ω or loopthrough, BNC	
	Ethernet: 10/100Base-T, 1 port, RJ-45	
Temperature / Humidity	0°C - 40°C / 30% - 90% (no condensation)	
Power / Consumption	HVS-300HS: 100VAC - 240VAC ±10%, 50/60Hz / Max. 193VA at 100VAC (191W), 220VA at 200VAC (211W)	
	HVS-300RPS: 100VAC - 240VAC ±10%, 50/60Hz / Max. 240VA at 100VAC (235W), 264VA at 200VAC (219W)	
	HVS-300HS + HVS-30FP: 100VAC - 240VAC ±10%, 50/60Hz / Max. 242VA (216W)	
	HVS-300U: 100VAC - 240VAC ±10%, 50/60Hz / 33VA (16W)	
	HVS-30RU: 100VAC - 240VAC ±10%, 50/60Hz / 13VA (5W)	
Dimensions / Weight	HVS-300HS: 430 (W) x 44 (H) x 430 (D) mm / Approx. 8kg (full option: 10kg)	
	HVS-300RPS: 430 (W) x 88 (H) x 430 (D) mm / Approx. 9kg (full option: 11kg)	
	HVS-300HS+HVS-30FP: 430 (W) x 44 (H) x 446 (D) mm / Approx. 9kg	
	HVS-300U: 420 (W) x 87.2(H) x 246 (D) mm / Approx. 3kg	
	HVS-30RU: 430 (W) x 44 (H) x 42 (D) mm / Approx. 1.5kg	
Accessories	HVS-300HS/300RPS: Operation manual, AC cord, Rack mount brackets	
	HVS-300U: AC adapter, AC cord retaining clips *Rack mount brackets are option	
	HVS-30FP: None	
	HVS-30RU: AC adapter, AC cord retaining clips, Rack mount brackets	
Options	HVS-30HSDI: HD/SD digital input card	HVS-30HSDO: HD/SD digital output card
	HVS-30HSAI: HD/SD analog input card	HVS-30HSOA: HD/SD analog output card
	HVS-30PCIN: PC input card	HVS-30PCO: PC output card
	HVS-AUX8: Aux Control Box (8-button type)	HVS-TALOC20/32: Tally open collector unit (20/32 terminal)
	HVS-AUX16: Aux Control Box (16-button type)	HVS-TALR20/32: Tally relay unit (20/32 terminal)
	HVS-30ED: Editor interface software	

## PC Requirements for HVS-30GUI

OS	Microsoft® Windows® XP Professional SP2 or higher Microsoft® Windows® Vista Home Premium or higher
CPU	Intel® Pentium 4 Processor 1.2GHz or higher
Memory	512MB or more
HDD	20MB or more free space
Graphics	1280 x 768 pixels or higher resolution, 24-bit color, Graphics card with 64MB or more memory (OpenGL 1.0 or 2.0 supported)
Interfaces	Ethernet: 10Base-T/100Base-TX, 1 port

## FOR-A COMPANY LIMITED

Head Office : 3-8-1 Ebisu, Shibuya-ku, Tokyo 150-0013, Japan

FOR-A America Corporate Office : 11155 Knott Avenue, Suite G&H, Cypress, CA 90630, USA

FOR-A America East Coast Office : 2 Executive Drive, Suite 670, Fort Lee Executive Park, Fort Lee NJ 07024, USA

FOR-A America Distribution & Service Center : 2400 North East Waldo Road, Gainesville, FL 32609, USA

FOR-A Latin America & the Caribbean : 5200 Blue Lagoon Drive, Suite #760, Miami, FL 33126, USA

FOR-A Corporation of Canada : 346A Queen Street West, Toronto, Ontario M5V 2A2, Canada

FOR-A UK Limited : UNIT C71, Barwell Business Park, Leatherhead Road, Chessington Surrey, KT9 2NY, UK

FOR-A Italia S.r.l. : Viale Europa 50 20093, Cologno Monzese (MI), Milan, Italy

FOR-A Corporation of Korea : 801 Dangsang Building, 53-1 Dangsang-Dong, Youngdeungpo-Gu, Seoul 150-800, Korea

FOR-A China Limited : 708B Huateng Building, No. 302, 3 Discriet, Jinsong, Chaoyang, Beijing 100021, China

## Homepage: <http://www.for-a.com/>

Tel : +81 (0)3-3446-3936 Fax : +81 (0)3-3446-1470

Tel : +1 714-894-3311 Fax : +1 714-894-5399

Tel : +1 201-944-1120 Fax : +1 201-944-1132

Tel : +1 352-371-1505 Fax : +1 352-378-5320

Tel : +1 305-931-1700 Fax : +1 305-264-7890

Tel : +1 416-977-0343 Fax : +1 416-977-0657

Tel : +44 (0)20-8391-7979 Fax : +44 (0)20-8391-7978

Tel : +39 02-254-3635/6 Fax : +39 02-254-0477

Tel : +82 (0)2-2637-0761 Fax : +82 (0)2-2637-0760

Tel : +86 (0)10-8721-6023 Fax : +86 (0)10-8721-6033

ISO 9001 and 14001 certified (Sakura R&D)

© 2010 FOR-A Company Ltd. FOR-A is a registered trademark of FOR-A Company Ltd. Design and specifications subject to change without notice. Printed in Japan. 1002FJ3E