

**FUJINON**  
FUJIFILM

# HD ENG Broadcast Lenses

**SONY 1/2" XDCAM HD and PMW-EX3**  
compatible



**HD**  
DIGITAL

**DIIGI POWER**

## HS16x4.6BE RM



Zoom Ratio / Format	16X / 1/2"
Focal Length	4.6 to 74 mm (2X) 9.2 to 148 mm
Maximum Relative Aperture	1:1.4 (4.6 ~ 47 mm)
Maximum Photometric Aperture T-No.	1:2.2 (74 mm)
Maximum Photometric Aperture T-No.	1:1.5 (4.6 ~ 47 mm)
Angular Field of View	1:2.4 (74 mm)
16:9 Aspect Ratio	4.6 mm 74° 18' x 46° 09'
M.O.D. from Front of Lens	74 mm 5° 24' x 3° 02'
Object Dimensions at M.O.D.	0.40 m
Filter Size	4.6 mm 710 x 399 mm
Dia ø x Length (w/o Hood)	74 mm 44 x 25 mm
Weight (w/o Hood)	ø 107 mm P=1
Options	ø 95 x 240 mm
Features	1.98 kg
Notes:	16 Bit Encoder
	Inner Focus/Quick Zoom/Zoom Limit
	Requires ACM-18 adaptor for use with Sony PMW-EX3

## HS18x5.5BE RM/RD\*



\*RD contain servos for zoom and focus.

Zoom Ratio / Format	18X / 1/2"
Focal Length	5.5 to 100 mm (2X) 11 to 200 mm
Maximum Relative Aperture	1:1.4 (5.5 ~ 78 mm)
Maximum Photometric Aperture T-No.	1:1.8 (100 mm)
Maximum Photometric Aperture T-No.	1:1.5 (5.5 ~ 78 mm)
Angular Field of View	1:1.9 (100 mm)
16:9 Aspect Ratio	5.5 mm 64° 43' x 39° 14'
M.O.D. from Front of Lens	100 mm 4° 00' x 2° 15'
Object Dimensions at M.O.D.	0.60 m
Filter Size	5.5 mm 741 x 417 mm
Dia ø x Length (w/o Hood)	100 mm 41 x 23 mm
Weight (w/o Hood)	ø 82 mm P=0.75
Options	ø 85 x 206.6 mm
Features	1.58 kg (RM) / 1.65 kg (RD)*
Notes:	16 Bit Encoder
	Inner Focus/Quick Zoom/Zoom Limit
	Requires ACM-18 adaptor for use with Sony PMW-EX3

## HSs18x5.5B RM/RD\*



\*RD contain servos for zoom and focus.

Zoom Ratio / Format	18X / 1/2"
Focal Length	5.5 to 100 mm
Maximum Relative Aperture	1:1.4 (5.5 ~ 77 mm)
Maximum Photometric Aperture T-No.	1:1.8 (100 mm)
Maximum Photometric Aperture T-No.	1:1.5 (5.5 ~ 77 mm)
Angular Field of View	1:1.9 (100 mm)
16:9 Aspect Ratio	5.5 mm 64° 43' x 39° 14'
M.O.D. from Front of Lens	100 mm 4° 00' x 2° 15'
Object Dimensions at M.O.D.	0.60 m
Filter Size	5.5 mm 741 x 417 mm
Dia ø x Length (w/o Hood)	100 mm 43 x 24 mm
Weight (w/o Hood)	ø 82 mm P=0.75
Options	ø 85 x 206.6 mm
Features	1.58 kg (RM) / 1.60 kg (RD)*
Notes:	16 Bit Encoder
	Inner Focus/Quick Zoom/Zoom Limit
	Requires ACM-18 adaptor for use with Sony PMW-EX3

## XS13x3.3BRM



Zoom Ratio / Format	13X / 1/2"
Focal Length	3.3 to 43 mm
Maximum Relative Aperture	1:1.4 (3.3 ~ 32 mm)
Maximum Photometric Aperture T-No.	1:1.9 (43 mm)
Maximum Photometric Aperture T-No.	1:1.5 (3.3 ~ 32 mm)
Angular Field of View	1:2.1 (43 mm)
16:9 Aspect Ratio	3.3 mm 93° 07' x 61° 25'
M.O.D. from Front of Lens	43 mm 9° 16' x 5° 13'
Object Dimensions at M.O.D.	0.30 m
Filter Size	3.3 mm 752 x 406 mm
Dia ø x Length (w/o Hood)	43 mm 58 x 31 mm
Weight (w/o Hood)	ø 127 mm P=0.75
Options	ø 95 x 240.5 mm
Features	1.93 kg
Notes:	16 Bit Encoder
	Inner Focus
	Requires ACM-18 adaptor for use with Sony PMW-EX3

## XS17x5.5BRM



Zoom Ratio / Format	17X / 1/2"
Focal Length	5.5 to 94 mm
Maximum Relative Aperture	1:1.4 (5.5 ~ 77 mm)
Maximum Photometric Aperture T-No.	1:1.7 (94 mm)
Maximum Photometric Aperture T-No.	1:1.5 (5.5 ~ 77 mm)
Angular Field of View	1:1.8 (94 mm)
16:9 Aspect Ratio	5.5 mm 64° 43' x 39° 14'
M.O.D. from Front of Lens	94 mm 4° 15' x 2° 23'
Object Dimensions at M.O.D.	0.60 m
Filter Size	5.5 mm 741 x 417 mm
Dia ø x Length (w/o Hood)	94 mm 41 x 23 mm
Weight (w/o Hood)	ø 82 mm P=0.75
Options	ø 85 x 206.6 mm
Features	1.53 kg
Notes:	16 Bit Encoder
	Inner Focus
	Requires ACM-18 adaptor for use with Sony PMW-EX3

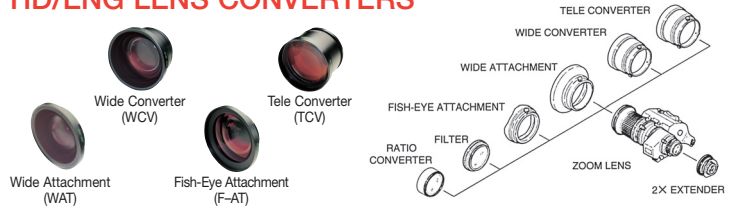
NOTE: All above lenses require ACM-18 adaptor for use with Sony PMW-EX3 camera

# ACCESSORIES



- A. CFC-990 Flex Cable
- B. FMM-6B Focus Manual Module
- C. ZMM-6 Zoom Manual Module
- D. ESF-1 Focus Cable
- E. MCA-6 Mounting Clamp
- F. ERD-20A-A02 Zoom Demand
- G. FSP-13G Focus Positional Module
- H. EPD-4A-E02 Digi Focus Demand
- I. CZH-14 Zoom Handle
- J. CFH-11 Focus Handle
- K. MCA-7 Mounting Clamp
- L. EPD-21A-A01/A02 Focus Demand
- M. ERD-10A-D01 Digi Zoom Demand

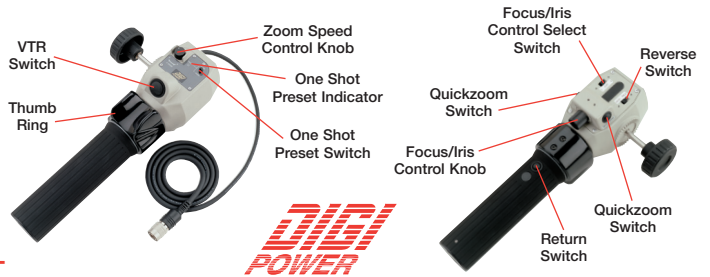
# HD/ENG LENS CONVERTERS



Model	Type	ø Size	Converter*	Mag.	Converted Focal Length (mm)	M.O.D. (m)	Weight (kg)
XS17x5.5	TELE	85 mm	TCV-H85	1.5x	94.0→141.0	1.35	1.10
	WIDE	85 mm	WCV-H85	0.8x	5.5→4.4	0.38	1.05
	WIDE	85 mm	WAT-H85	0.7x	5.5→3.8	0.29	0.36
	FISHEYE	85 mm	F-ATH85	0.57x	5.5→3.1	0.19	0.36
HS18x5.5	TELE	85 mm	TCV-H85	1.5x	100.0→150.0	1.35	1.10
HSs18x5.5	WIDE	85 mm	WCV-H85	0.8x	5.5→4.4	0.38	1.05
	WIDE	85 mm	WAT-H85	0.7x	5.5→3.8	0.29	0.36
	FISHEYE	85 mm	F-ATH85	0.57x	5.5→3.1	0.19	0.36

\*TCV/WCV are zoom thru type.  
Wide attachment and fisheye attachment can be used at WIDE END. Number of M.O.D. is at wide end.

# DIGI ZOOM DEMAND - ERD-10A-D01



(New Digital features only available on ERM/ERD-M/S)

# FEATURES

## DIGIPOWER

In order to enhance the newest optical design technology, Fujinon has developed the digital servo control system DIGI POWER offering advanced performance of its zoom lenses. In addition to improved specification and performance, the utilization of digital circuitry in our DIGI POWER product line has made many new features available that were virtually impossible in the past. DIGI POWER lenses provide for vastly improved accuracy and repeatability over previous designs and enable custom control parameters to be memorized for individual camera operator's preferences. An optional 16 bit processor for zoom, focus and iris is available for applications requiring a high degree of accuracy.

## QUICKZOOM

QUICKZOOM speed is 0.7 seconds from end to end. QUICKZOOM provides a rapid zoom movement to the telephoto position to check focus by the simple push of a button. Releasing the button returns the lens to the previously selected zoom position. Furthermore, by setting the switch, QUICKZOOM can be performed remotely from zoom rate demand units.

## ONE SHOT PRESET

Zoom and focus can be preset and memorized in advance at a selected position. One touch of the switch during shooting will instantly return to the memorized position for time saving production.



## ZOOM MODE SELECT

A zoom mode switch provides the option to change the zoom response from "normal" to more sensitive on the wide or telephoto side. With the 3-zoom mode (10-zoom mode on ENG/EFP) the user can select the most suitable fine touch. These zooming mode settings are ideal when switching between productions such as drama and sports.



## ZOOM LIMIT

The zoom limit function can be used in the servo operational mode. By using this function, the zoom movement toward both the wide side and the telephoto side can be limited. An override switch quickly returns the lens to normal mode.



Standard on DIGIPOWER ENG/EFP lenses

## AUTO-CRUIZING ZOOM

Pressing the C-Z button while zooming will fix the zoom speed at the existing rate. Pressing the seesaw switch a second time slightly will return the zoom speed to normal.

Standard on DIGIPOWER ENG/EFP lenses

## ZOOM MAXIMUM SPEED ADJUSTMENT

The maximum zooming speed obtained when pressing the seesaw switch to the end can be adjusted.



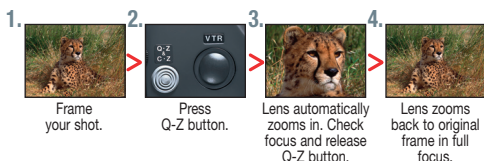
## 16 BIT ACCURACY FOR REMOTE CONTROL

Remote control of zoom, focus and iris for all DIGI POWER lenses is possible via 13 bit serial digital connection. Optional 16 bit processing is available for more accurate positioning in virtual studios and other applications.



## ACCESSORY COMPATIBILITY

Analog control accessories can be used with the DIGI POWER lens. (Some functions may be limited.)

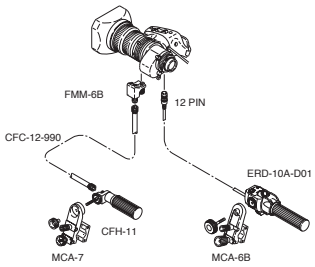


# QuickZoom

## DIGI POWER REAR CONTROL KITS

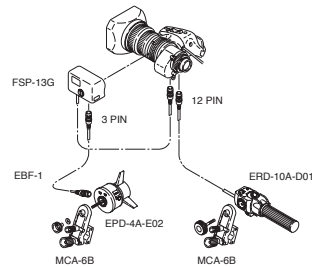
### MS-11D Manual Focus/Servo Zoom

For use with RM/ZM type lenses.



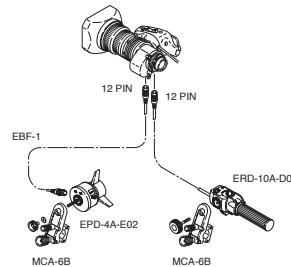
### SS-11D Servo Focus/Servo Zoom

For use with RM/ZM type lenses.



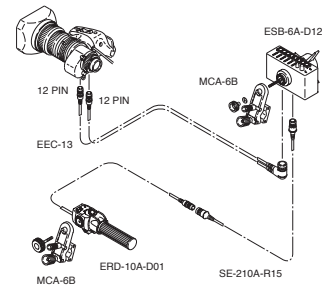
### SS-13D Servo Focus/Servo Zoom

For use with RD/ZD type lenses.



### SS-14S Servo Focus/Servo Zoom

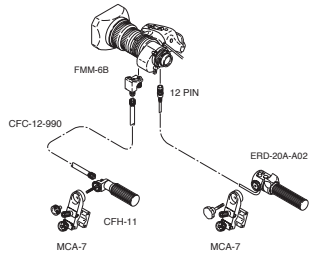
For use with RD/ZD type lenses.



## STANDARD REAR CONTROL KITS

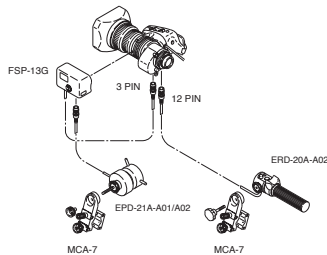
### MS-11 Manual Focus/Servo Zoom

For use with RM/ZM type lenses.



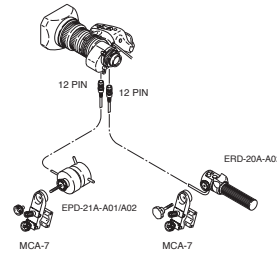
### SS-11 Servo Focus/Servo Zoom

For use with RM/ZM type lenses.

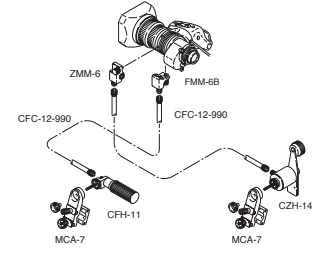


### SS-13A Servo Focus/Servo Zoom

For use with RD/ZD type lenses.



### MM-11 Manual Focus/Manual Zoom



# FUJINON FUJIFILM

## Broadcast & Communications Products Division

#### FUJINON HEADQUARTERS:

##### NEW JERSEY - SALES & SERVICE CENTER

10 High Point Drive, Wayne, NJ 07470-7434  
(973) 633-5600 FAX: (973) 633-5216  
E-mail: lens.sales@fujinon.com  
[www.fujinon.com](http://www.fujinon.com)

#### SOUTH EAST

##### FLORIDA - SALES

4101 No. 48th Terrace, Hollywood, FL 33021  
(954) 966-0484 FAX: (954) 966-1368  
E-mail: kelly.n@fujinon.com

##### GEORGIA - SALES

12296 S. Main Street, Box 152, Trenton, GA 30752  
(706) 657-8481 FAX: (706) 657-8438  
E-mail: susan.t@fujinon.com

##### GEORGIA - SERVICE CENTER

1231 Collier Road, Suite G, Atlanta, GA 30318  
(404) 351-1470 FAX: (404) 351-7035  
E-mail: wzferino@fujinon.com

#### LATIN AMERICA

##### FLORIDA - SALES

2900 N.W. 112th Avenue, Suite 1, Miami, FL 33172  
(305) 406-2910 FAX: (305) 406-9903  
E-mail: mario@fujinon.com or yukio.ito@fujinon.com

#### MIDWEST

##### ILLINOIS - SALES

655 Deerfield Road, Ste. 100, #206, Deerfield, IL 60015-3241  
(847) 945-8923 FAX: (847) 945-8943  
E-mail: atanielian@fujinon.com

#### SOUTH CENTRAL

##### TEXAS - SALES & SERVICE CENTER

4951 Airport Parkway, Ste. 802-A, Addison, TX 75001-6617  
(972) 385-8902 FAX: (972) 392-3251  
E-mail: dave.w@fujinon.com

#### WEST

##### CALIFORNIA - SALES & SERVICE CENTER

W. Bay Business Park, 2621 Manhattan Beach Blvd.  
Redondo Beach, CA 90278-1604  
(310) 536-0800 FAX: (310) 536-0022  
E-mail: ndlt@fujinon.com

##### WASHINGTON - SALES

P.O. Box 36, Mercer Island, WA 98040  
(206) 230-0237 FAX: (206) 230-0240  
E-mail: josh.ewing@fujinon.com

#### CANADA

##### ONTARIO - SALES

16715 Yonge Street, Unit #12, Suite 203  
Newmarket, ON, L3X 1X4, Canada  
(905) 898-1382 FAX: (905) 898-3350  
E-mail: stosh.durbacz@fujinon.com

#### FUJINON CORPORATION

##### JAPAN

1-324 Uetake, Kita-Ku, Saitama City  
Saitama 331-9624 Japan  
Phone: 81-48-668-2152 FAX: 81-48-651-8517  
E-mail: sales@msv.fujinon.co.jp  
[www.fujinon.co.jp](http://www.fujinon.co.jp)