

BMC-PWR-PN

Blackmagic Clamp Solution QUICKSTART GUIDE



Checked by

What's included

- 1-BM Power Adaptor AC107 - S,P,C,SU
- ELE-15RDA
- ELE-Cheese Jr.
- ELE-Stud Adaptor
- ELE-PN

CONDITIONS OF WARRANTY SERVICE

- Free service for one year from the day of purchase if the problem is caused by manufacturing errors.
- The components and maintenance service fee will be charged if the warranty period has expired.

Free Service will not be Provided in the Following Situations: (* Even if the product is still within the warranty period.)

- Damage caused by abuse or misuse, dismantling, or changes to the product not made by the company.
- Damage caused by natural disaster, abnormal voltage, and environmental factors etc.

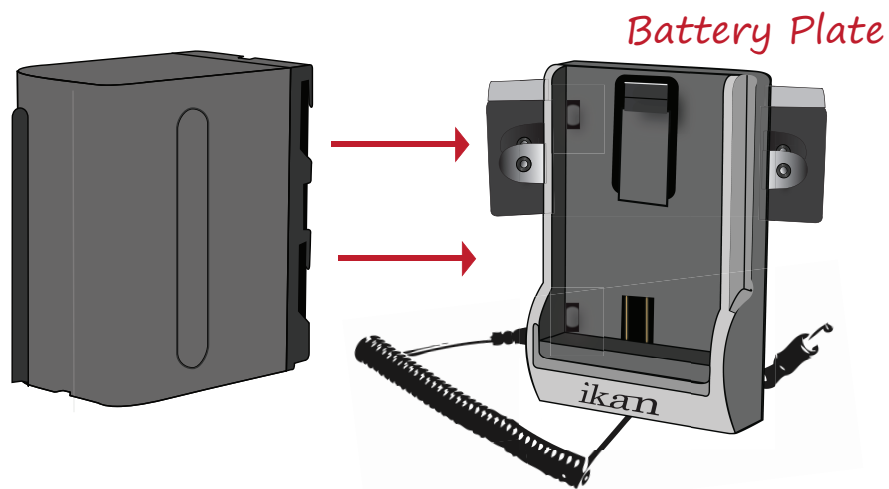
BMC-PWR-PN

Blackmagic Clamp Solution QUICKSTART GUIDE

BMC-PWR-PN-C ,S,P,SU,E6

Can be used with Canon, Sony, and Panasonic DV batteries.

This unit is set up with five different battery types. The DV battery option allows you to slide the battery on the plate, and the AC107 does the work for you by turning that 7.2v into a 12v output.



The BMC-PWR-PN-C ,S,P,SU,E6 It allows you to place the battery option anywhere you want to attach the pinch clamp to.

