

Using the *ikan Elite Remote* with Road Trip



The *ikan Elite Remote* is available for purchase from many common electronics vendors, and the manufacturer's information is available at <http://ikancorp.com/productdetail.php?id=501>

This is the preferred remote for use with the DragonFly Road Trip iPad application because it has all of the controls commonly available on other professional editing remotes.

Only a few steps are required to set up the remote initially, and using the remote to precisely control your video in Road Trip is simple and easy.

Follow the steps below to get started with the remote, and call our support line at (256) 270-1163 or email us at support@dragonflyathletics.com if you need any assistance.

Step 1:

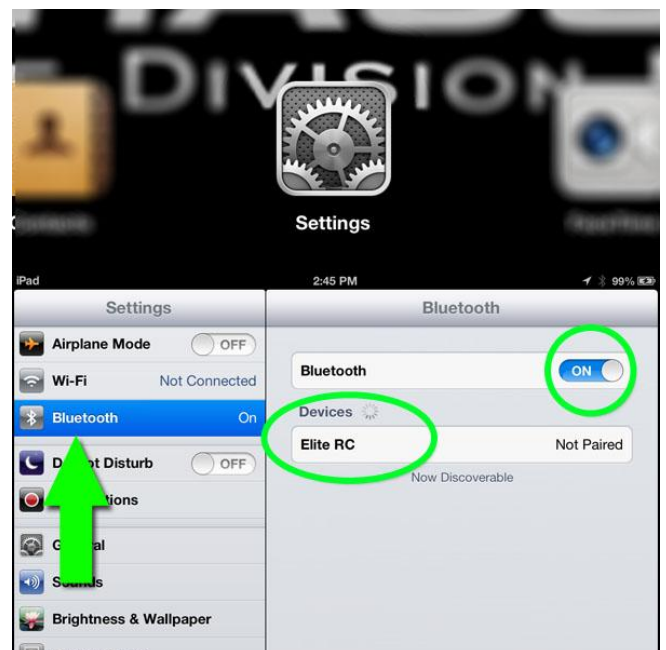
Ensure that you have installed fresh batteries and then turn the remote's power switch to ON and press the SYNC button on the back of the remote. After you press the SYNC button, the indicator light on the front of the remote should flash blue. If the indicator light does not flash blue, try pressing the SYNC button again.



Step 2:

Open the Settings application on your iPad and navigate to the Bluetooth section. Turn the Bluetooth switch ON and look for the "Elite RC" device. Tap the "Elite RC" row and wait until you see "Connected" in place of "Not Paired."

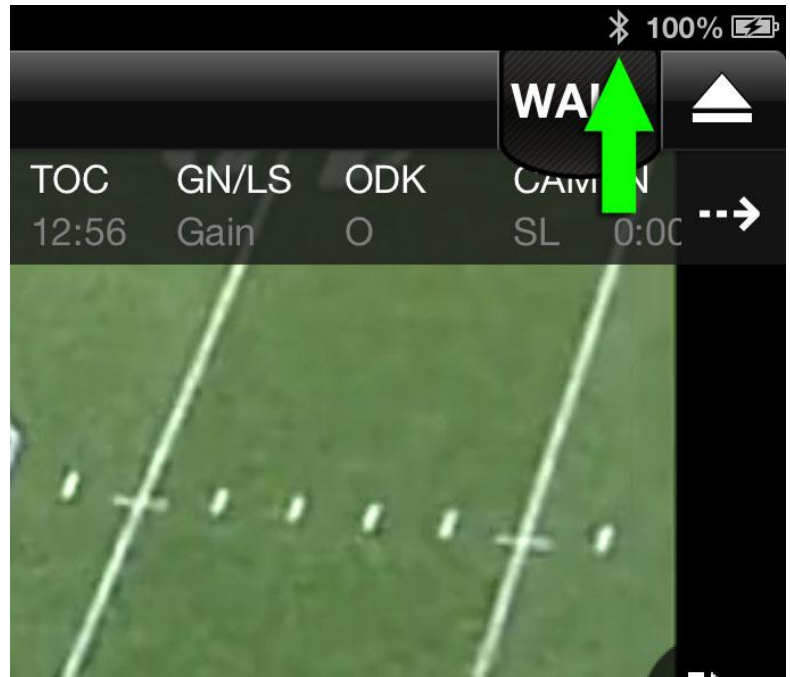
Your remote is now connected to the iPad.



Using the *ikan Elite Remote* with Road Trip

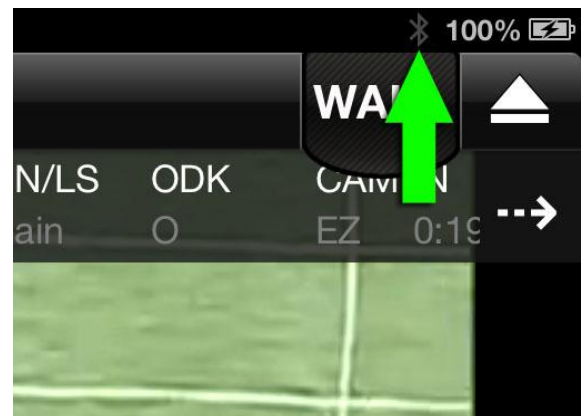
Step 3:

Open the Road Trip application and begin using the remote to control the video player. You can confirm that your remote is connected by locating the Bluetooth icon on the iOS status bar.



Further Tips:

You will want to switch your remote OFF after using it to conserve battery power. If you forget to switch the remote off or if you move out of range of the remote, it may become disconnected from your iPad. You will see the Bluetooth icon gray out when this happens. To reconnect, simply press any key on the remote, or toggle the switch from ON to OFF and back ON.



If you need to enter any text while your remote is on, you will need to press the keyboard button on the remote to activate your keyboard in iOS. Simply select any text field as normal, and then take the additional step of pressing the button indicated in the image.

