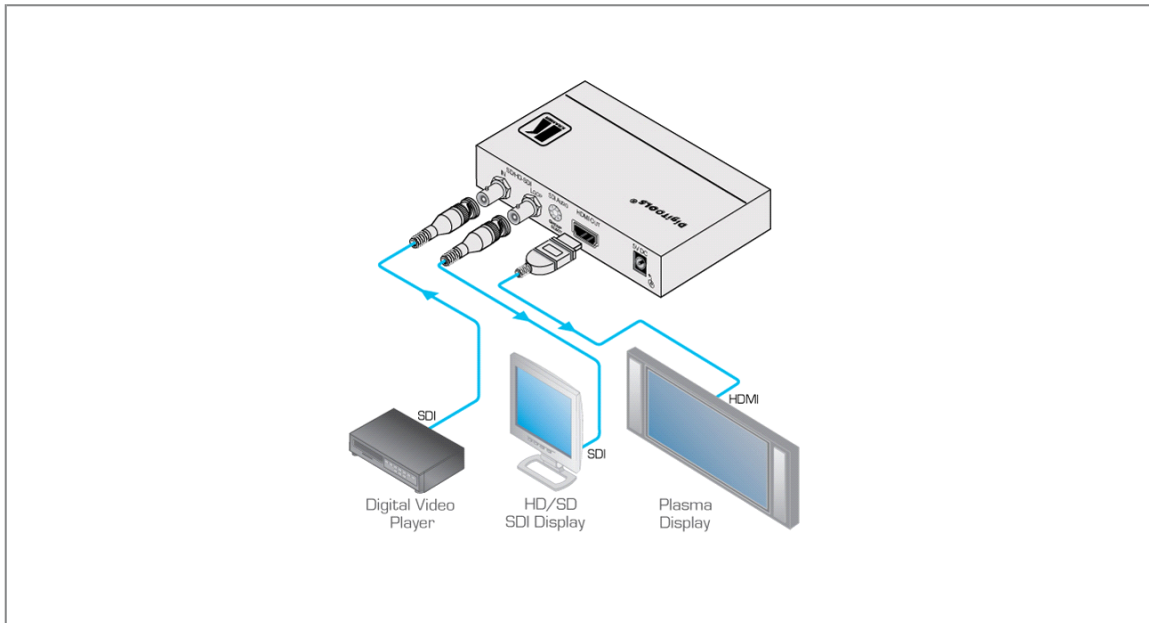




FC-331 3G HD-SDI to HDMI Format Converter



The **FC-331** is a high-performance format converter for signals up to 3G HD-SDI. It converts the input video format (with embedded audio) to an HDMI output signal.





FC-331

FEATURES

- **Inputs** - 3G HD-SDI on a BNC connector.
- **Outputs** - 1 HDMI.
- HDTV Compatible.
- Looping Input with Reclocking.
- Audio Group De-embedded Selection.
- **Multi-Standard Operation** - SDI (SMPTE 259M and SMPTE 344M), HD-SDI (SMPTE 292M) and 3G HD-SDI (SMPTE 424M).
- **Active Input & Output LED Indicators.**
- **Compact DigiTOOLS®** - 3 units can be rack mounted side-by-side in a 1U rack space with the optional RK-3T rack adapter.

TECHNICAL SPECIFICATIONS

INPUT:	1 SDI, HD-SDI, 3G HD-SDI on a BNC connector.
OUTPUTS:	1 SDI, HD-SDI, 3G HD-SDI loop on a BNC connector, 1 HDMI connector.
MAX. DATA RATE:	Up to 3Gbps.
STANDARD	HDMI.
COMPLIANCE:	
INDICATOR LEDES:	SD/HD, OUT, ON.
POWER SOURCE:	5V DC, 400mA.
DIMENSIONS:	12cm x 7.2cm x 2.4cm (4.7" x 2.8" x 1.0") W, D, H.
WEIGHT:	0.3kg (0.7lbs).
ACCESSORIES:	Power supply.
OPTIONS:	RK-3T 19" rack adapter.