



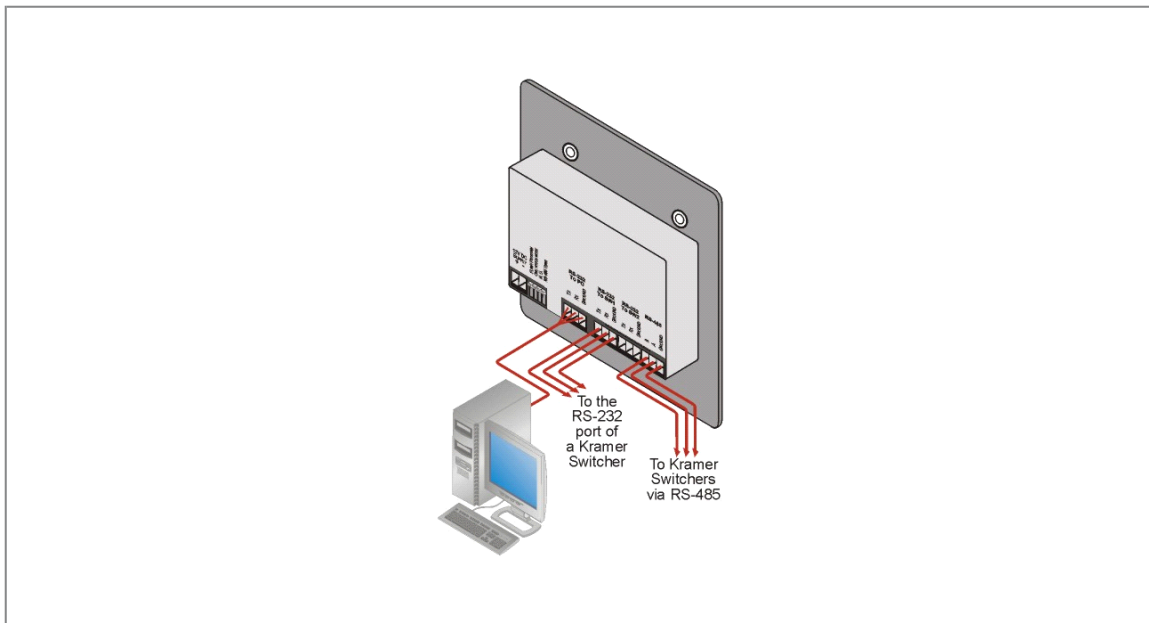
## RC-1000N

Active Wall Plate - Master Programmable Remote Control Panel



The **RC-1000N** is a programmable remote control for Kramer switchers with RS-232 and RS-485 control interfaces. This wall plate unit can control up to 16 matrix switchers.

Available in Gray, White & Off-White





## RC-1000N

---

### FEATURES

---

- **Configurable Back - Lit Buttons**
- **Take/Machine # Button** - Select the switcher to control and executes multiple switches with one button.
- **Front Panel Lockout**
- **Flexible Control Options** - Front Panel, 3 RS-232 (1 for PC control & 2 for switcher control), 1 RS-485 (for machine control).
- **Wall Plate** - 2 gang.

### TECHNICAL SPECIFICATIONS

---

**PORTS:** 3 RS-232 ports on terminal block connectors; RS-485 port on a terminal block connector

**POWER SOURCE:** 12V DC, 100mA

**DIMENSIONS:** Topside: 11.4cm x 11.4cm (4.5" x 4.5") W, H

**WEIGHT:** 0.3 kg (0.67 lbs.) approx.

**ACCESSORIES:** Power supply