



KRAMER ELECTRONICS, Ltd.

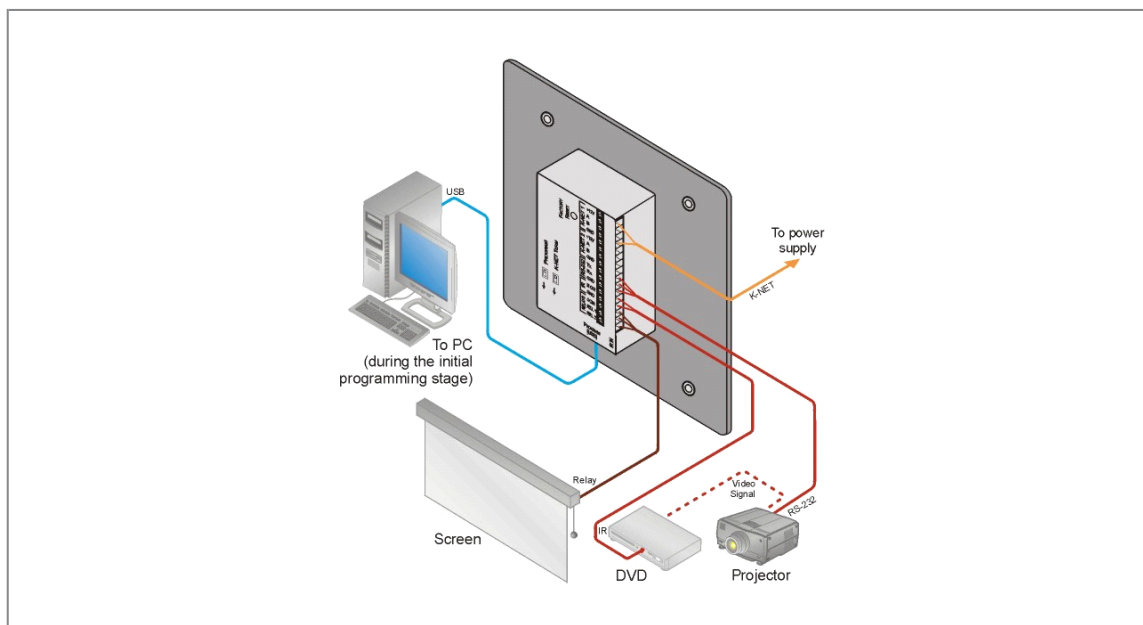
www.kramerelectronics.com

## RC-63A

6-Button Room Controller with Analog Volume Knob & Printed Group Labels



The **RC-63AL** is a 6-button room controller with an analog volume knob for multimedia rooms. The unit functions either as a standalone controller or as part of the SummitView™ system to control audio components, video components and other room facilities such as lights and screens.





## RC-63A

### FEATURES

- **6 Programmable Buttons** - Color, back-lit & label capable.
- **Printed Group Labels** - For programmable back-lit LCD group labels, order the RC-62AL.
- **Analog 10kΩ Volume Control Knob.**
- **Macro Capability** - Carry out multiple commands with a single press of a button.
- **Command Banks** - Each button offers multiple layers of functions for alternate behavior, toggle functionality, and more.
- **Internal Clock** - Schedule recurring tasks, define system shutdown timer for economic operation, and more.
- **1 USB** - For programming.
- **1 Bidirectional RS-232** - Control AV equipment such as projectors, LCD and PDP displays, power amplifiers, switchers and scalars.
- **1 IR Output** - Additional control port for AV equipment.
- **IR Learning Function** - Learn commands from IR remotes.
- **2 Relay Contact Closure Ports** - Conveniently control other room items related to the AV system such as raising and lowering drapes, the screen or the projector.
- **2 K-Net™ Connectors** - To connect to other control panels or a central control processor.
- **K-Net Control Channel** - Provides power and control data to the wall plate controllers over a single cable.
- **Dimensions** - 11.4cm x 2.9cm x 11.4cm (4.49" x 1.14" x 4.49") US; 15.2cm x 2.3cm x 8.6cm (5.98" x 0.9" x 3.39") and 15.2cm x 2.3cm x 8cm (5.98" x 0.9" x 3.15") EU W, D, H.
- **Wall Plate Size** - 2 gang. Available in white.

### TECHNICAL SPECIFICATIONS

- |                      |   |
|----------------------|---|
| <b>PORTS:</b>        | 1 RS-232 on terminal block connectors; 2 K-NET on terminal block connectors; 1 USB port.  |
| <b>OUTPUT:</b>       | 2 relays on terminal block connectors (36V AC or DC, 2A, 60V AC maximum on non-inductive load); 1 IR emitter on terminal block connectors.                    |
| <b>POWER SOURCE:</b> | 12V DC, 100mA.  |
| <b>FUSE:</b>         | 500mA, FSMD 2920.   |
| <b>ADAPTER:</b>      | SummitView™ kits: 12V, 5A; independent: 12V, 500mA.   |
| <b>DIMENSIONS:</b>   | 11.4cm x 2.9cm x 11.4cm (4.49" x 1.14" x 4.49") US; 15.2cm x 2.3cm x 8.6cm (5.98" x 0.9" x 3.39") and 15.2cm x 2.3cm x 8cm (5.98" x 0.9" x 3.15") EU W, D, H. |
| <b>WEIGHT:</b>       | 0.14kg (0.31lbs) approx.  |
| <b>ACCESSORIES:</b>  | USB cable 0.91m (3ft), screwdriver, Windows®-based Kramer control software.   |
| <b>OPTIONS:</b>      | 12V DC, 0.5A Power supply; Kramer 3.5mm to IR Emitter Control Cable (C-A35/IRE-10); 15m (50ft) and 20m (65ft) IR emitter extension cables.                    |