



Libec

CAMERA SUPPORT EQUIPMENT

Specifications are subject to change without notice.
The colors in this brochure may differ from actual products
because of the printing color inks or photographic conditions.

HEIWA SEIKI KOGYO CO.,LTD. - Headquarters
978-1 Nishibukuro,Yashio-City,
Saitama, 340-0833 Japan
TEL: +81(0) 48 995 1301
FAX: +81(0) 48 997 0804

www.libec.co.jp

Libec Sales of America, Inc - U.S. Sales office
377 Van Ness Av., Suite 1201
Torrance, CA 90501 USA
TEL: +1 310 787 9400
FAX: +1 310 787 9422

www.libecsales.com

DV Series
LS Series
Jib Arm
Tracking Rail Systems
Pedestal Systems
Zoom Controls
Tripods
Optional Accessories

LIBEC provides user-friendly tripods, pedestal systems, jib arm, tracking systems and accessories (such as zoom controls) designed for the High Definition to help you take full advantage of your camera. In addition to our fundamental principle of reasonable pricing, we maintain an uncompromising attitude when it comes to ensuring the highest possible product quality.

Quality

Since its founding in 1955, LIBEC of Japan has been engaged in the manufacturing of tripods and heads for both still and video cameras. While many companies today are moving their production base abroad to reduce manufacturing costs, the majority of our products are still bases manufactured in Japan. Furthermore, most of the manufacturing processes are conducted in our own factories. We are able to achieve high cost performance by utilizing the knowledge gained over the last fifty years and by employing strict quality controls on our production lines. LIBEC is also fulfilling our corporate social responsibilities with regard to the environmental issues that have become a major public concern. We use our own instruments to detect those hazardous substances designated by the RoHS Protocol to ensure that the materials used for our products are all within permissible limits.



Sales & Support

LIBEC products are available through local distributors. We currently have sales network in more than 60 countries and the number is expanding every year.

Please visit our website www.libec.co.jp for the contact information on your local distributor. These distributors also provide customer service. Customers can obtain prompt service including repair and part replacement. Our website has information on discontinued products and a list of service parts along with descriptions and illustrations for each product. You will also find specification summaries and dimensions of our products on the website.

www.libec.co.jp

www.libecsales.com

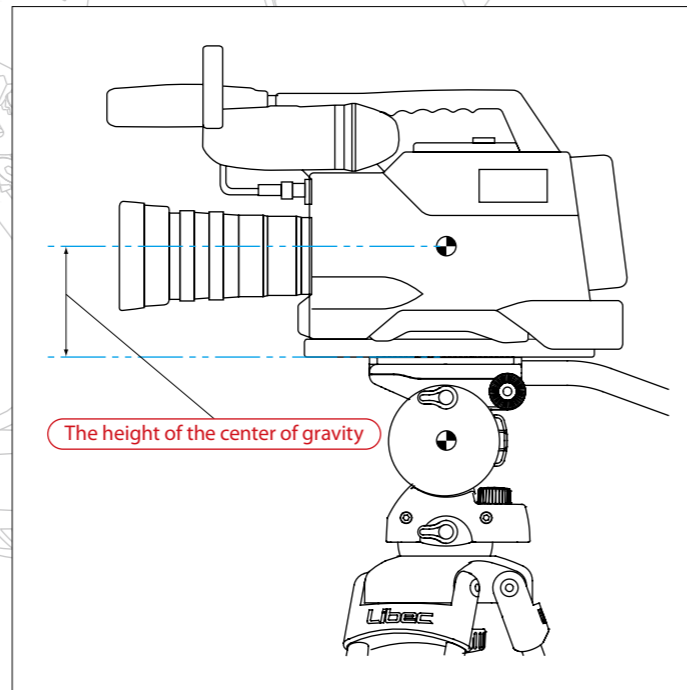
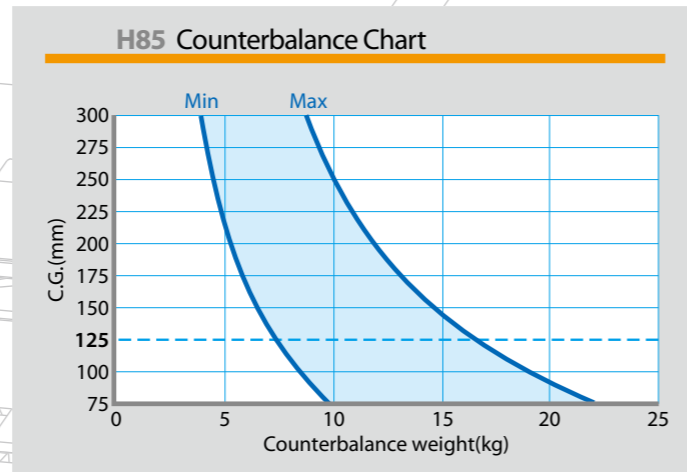
	Counterbalance	1
DV Series	TH-650DV TH-950DV LS-22DV	2
LS Series	LS-38 Systems	3
	LS-55 Systems	4
LS Series	LS-60 Systems	5
	LS-70 Systems	6
LS Series		7
	LS-85 Systems	8
LS Series		9
	LS-100 Systems	10
	Jib Arm	11
	Tracking Rail Systems	12
		13
	Pedestal Systems	14
Optional Accessories		15
	Zoom Controls	16
Optional Accessories	Tripods	17
	Other Accessories	18
		19
	Specifications	20

Counterbalance chart to help you choose the perfect tripod head

The definitive way to find the most accurate counterbalance between camera/accessories and a tripod head is to actually mount the camera on the head. However, you can use this counterbalance chart to get a rough idea of the correct counterbalance.

The vertical axis of the chart depicts the height of the gravitational center and the horizontal axis is load weight (total weight of the camera and accessories). Based on the combination of these two elements, you can find a suitable tripod head for your camera. The area between the two curved lines represents the range of counterbalance that you can set with the counterbalance adjustment knob.

When a standard lens, microphone and battery are used, the normal height of the gravitational center is approximately 125mm / 4.9" (for a shoulder type camera), 100mm / 3.9" (semi-shoulder) and 75mm / 3.0" (hand-held). The height of the gravitational center will not shift much even when a different lens or a different battery is used on the back of the camera. Please be aware that attaching a light or a monitor on top of the camera will shift the center of gravity.



The height of the center of gravity is the distance from the center of the camera to the top of the head (or the camera plate). The shorter this distance, the higher the weight point becomes.



TH-650DV

The TH-650DV is considered the standard model when it comes to entry-level tripods for amateur users of handycams or small camcorders. It is the perfect tripod for current mainstream MiniHD camcorders. Users enjoy a compact yet smooth operation, and also have the benefit of great camera balance due to the counter balance feature with the built-in spring.

TH-650DV

Payload : 3kg / 6.5lb **Counter balance :** FIX **Drag mode :** FIX
Tilt angle : +90° / -70° **Camera plate :** Quick release plate **Plate attachment :** 1/4" screw with video pin
Weight : 3.2kg / 7lb **Height :** 70 to 150cm / 27.5 to 59" **Ball diameter :** 65mm **Section :** 2STAGE

TH-950DV

Payload : 4kg / 9lb **Counter balance :** Off + 3position **Drag mode :** FIX
Tilt angle : +90° / -60° **Camera plate :** Quick release plate **Plate attachment :** 1/4" screw with video pin
Weight : 3.7kg / 8.1lb **Height :** 75 to 155cm / 29.5 to 61" **Ball diameter :** 75mm **Section :** 2STAGE

LS-22DV

Payload : 4kg / 9lb **Counter balance :** Off + 3position **Drag mode :** FIX
Tilt angle : +90° / -60° **Camera plate :** Quick release plate **Plate attachment :** 1/4" screw with video pin
Weight : 3.9kg / 8.5lb **Height :** 72 to 147cm / 28 to 58" **Ball diameter :** 75mm **Section :** 2STAGE



TH-950DV

Due to smaller and higher performance hand held camcorders constantly entering the market, the industry enjoys an increasing demand for tripods and heads for such camcorders. Depending on the application or budget, you can choose either the TH-950DV (which uses a common head and provides easy setup with a lever operation), or the sturdy professional LS-22DV. Ever since it was introduced, the competitively priced high performance TH-950DV and LS-22DV have been the world's most popular tripods in their class.



LS-22DV

TH-650DV / TH-950DV Option

DL-2

Folded length : 46cm / 18.1"
Weight : 1.9kg / 4.2lb



LS-22DV Option

DL-3

Folded length : 50cm / 19.7"
Weight : 4.1kg / 9lb



LS-38 Systems



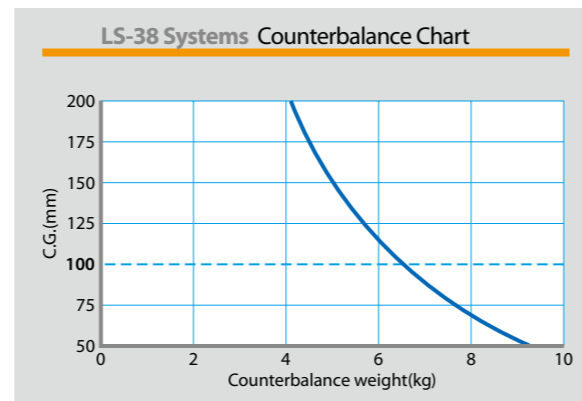
LS-38(2A)

System with floor spreader



LS-38M(2A)

System with mid-level spreader



The natural successor to the LS-37, which set the standard in the 4 to 8 kg / 9 to 17.5lb category, the LS-38(2A) and LS-38M(2A) prove Libec's commitment to product development. This all new 2stage tripod has been redesigned from the ground up giving a quality of steadiness and usability usually only found in more expensive models. The H38 head has also had a makeover allowing the users to balance and detach the camera more easily. The LS-38(2A) and LS-38M(2A) are the perfect partners for the HD digital era.

LS-38(2A) System with floor spreader

Payload : 8kg / 17.5lb **Counter balance :** FIX **Drag mode :** FIX
Tilt angle : +90° / -80° **Camera plate :** Sliding plate **Sliding range :** ±40mm / ±1.6" **Plate attachment :** 1/4" screw with video pin
Spare screw : 3/8" screw **Weight :** 5.7kg / 12.5lb **Height :** 53.5 to 160cm / 21 to 63" **Ball diameter :** 75mm **Section :** 2STAGE

LS-38M(2A) System with mid-level spreader

Payload : 8kg / 17.5lb **Counter balance :** FIX **Drag mode :** FIX
Tilt angle : +90° / -80° **Camera plate :** Sliding plate **Sliding range :** ±40mm / ±1.6" **Plate attachment :** 1/4" screw with video pin
Spare screw : 3/8" screw **Weight :** 5.4kg / 11.9lb **Height :** 80 to 159.5cm / 31.5 to 63" **Ball diameter :** 75mm **Section :** 2STAGE

LS-55 Systems



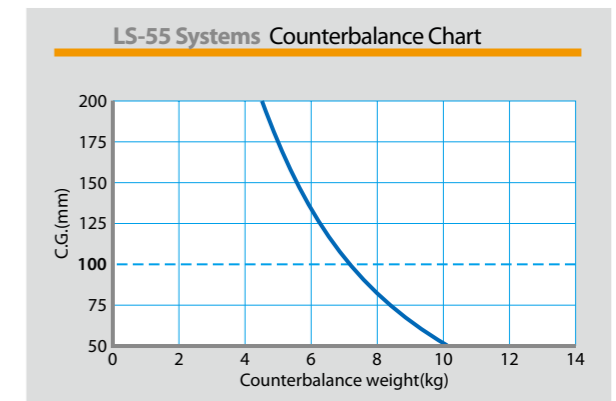
LS-55(2A)

System with floor spreader



LS-55M(2A)

System with mid-level spreader



Designed especially for professional DV and HDV camcorders. Building on the success of the LS-55, the redesigned LS-55(2A), with a bold and tough 2 stage leg and floor spreader and LS-55M(2A) with mid-level spreader, offer the new range of DV and HDV camcorders a steadiness and usability above its class. This is also suitable for film-like shooting by popular DV and HDV camcorders with various accessories.

LS-55(2A) System with floor spreader

Payload : 10kg / 22lb **Counter balance :** FIX **Drag mode :** 2STEP
Tilt angle : ±90° **Camera plate :** Sliding plate **Sliding range :** ±40mm / ±1.6" **Plate attachment :** 1/4" screw with video pin
Spare screw : 3/8" screw **Weight :** 6.1kg / 13.4lb **Height :** 52.5 to 159cm / 20.5 to 62.5" **Ball diameter :** 75mm **Section :** 2STAGE

LS-55M(2A) System with mid-level spreader

Payload : 10kg / 22lb **Counter balance :** FIX **Drag mode :** 2STEP
Tilt angle : ±90° **Camera plate :** Sliding plate **Sliding range :** ±40mm / ±1.6" **Plate attachment :** 1/4" screw with video pin
Spare screw : 3/8" screw **Weight :** 5.8kg / 12.8lb **Height :** 79 to 159cm / 31 to 62.5" **Ball diameter :** 75mm **Section :** 2STAGE

LS-60 Systems



LS-60(2A)

H60 / T98 / SP-2 / SC-9
System with floor spreader

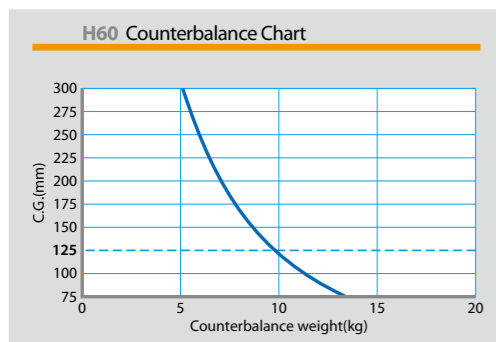


LS-60M(2A)

H60 / T98 / BR-4 / FP-2 / SC-9
System with mid-level spreader

H60

The H60 has two torque adjustment levels (strong and weak). It can slide 50mm / 2" both back and forth in order to provide ideal camera balance. You can easily attach the slide plate to your camera. Use of the steady and solid ENG tripod with its 100mm ball leveler enables you to produce professional grade ENG shots at a reasonable price.



H60

Payload : 13kg / 28.5lb **Counter balance :** FIX **Drag mode :** 2STEP
Weight : 3.7kg / 8.1lb **Tilt angle :** +85° / -65° **Camera plate :** Sliding plate **Sliding range :** ±50mm / ±2"
Plate attachment : 1/4" and 3/8" screw **Spare screw :** 3/8" screw

LS-60(2A) System with floor spreader

Weight : 7.2kg / 15.8lb **Height :** 53.5 to 156cm / 21 to 61.5" **Ball diameter :** 100mm **Section :** 2STAGE

LS-60M(2A) System with mid-level spreader

Weight : 6.9kg / 15.2lb **Height :** 79 to 159cm / 31 to 62.5" **Ball diameter :** 100mm **Section :** 2STAGE

LS-70 Systems



LS-70(2A)

H70 / T98 / SP-2 / SC-9
System with floor spreader

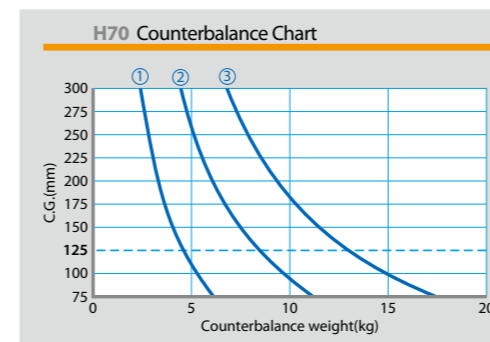


LS-70M(2A)

H70 / T98 / BR-4 / FP-2 / SC-9
System with mid-level spreader

H70

The H70 counterbalance mechanism supports operating configurations including ENG cameras, and studio configurations with a large viewfinder. Perfect counterbalance can be achieved depending on the camera weight and tilt angle from zero to maximum in three steps. The tilt and pan functions employ a simple free plus 3step change system to select torque. Simple attachment by sliding the plate up to 50mm / 2" forward and backward.



H70

Payload : 15kg / 33lb **Counter balance :** Free plus 3STEP **Drag mode :** Free plus 3STEP
Weight : 4.5kg / 9.9lb **Tilt angle :** +90° / -75° **Camera plate :** Sliding plate **Sliding range :** ±50mm / ±2"
Plate attachment : 3/8" screw x 2 **Spare screw :** 3/8" screw

LS-70(2A) System with floor spreader

Weight : 8kg / 17.6lb **Height :** 54.5 to 160.5cm / 21.5 to 63" **Ball diameter :** 100mm **Section :** 2STAGE

LS-70M(2A) System with mid-level spreader

Weight : 7.7kg / 16.9lb **Height :** 80.5 to 156cm / 31.5 to 61.5" **Ball diameter :** 100mm **Section :** 2STAGE

LS-85 Systems



LS-85(2A)

H85 / T98 / SP-2 / SC-9
System with floor spreader



LS-85M(2A)

H85 / T98 / BR-4 / FP-2 / SC-9
System with mid-level spreader



LS-85(2C) Carbon pipe

H85 / T98C / SP-2 / SC-9
System with floor spreader

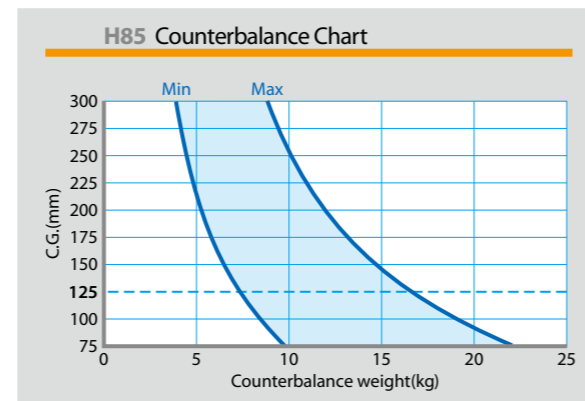


LS-85M(2C) Carbon pipe

H85 / T98C / BR-4 / FP-2 / SC-9
System with mid-level spreader

H85

The H85 is equipped with LIBEC's unique single-step counterbalance system that secures the optimum balance for the weight and tilt angle of the camera. Its unique drag system supports a wide range of professional needs such as capturing slow movement from a high speed subject, shooting in -30°C / -22°F environment. It also has an LED so that horizontal lines may be seen in the dark. The one-touch slide plate slides 50mm / 2" forward and back. This easy-to-attach device together with the counterbalance system provides a very smooth camera balance adjustment.



H85

Counterbalance range : 7~16.5kg / 15.5~36.5lb
Payload : 17kg / 37.5lb **Counter balance** : CONTINUOUS **Drag mode** : CONTINUOUS
Weight : 4.6kg / 10.1lb **Tilt angle** : ±90° **Camera plate** : Sliding plate **Sliding range** : ±50mm / ±2"
Plate attachment : 3/8" screw x 2 **Spare screw** : 3/8" screw

LS-85(2A) System with floor spreader

Weight : 8kg / 17.6lb **Height** : 54.5 to 161cm / 21.5 to 63.5" **Ball diameter** : 100mm **Section** : 2STAGE

LS-85M(2A) System with mid-level spreader

Weight : 7.7kg / 16.9lb **Height** : 80.5 to 160.5cm / 31.5 to 63" **Ball diameter** : 100mm **Section** : 2STAGE

LS-85(2C) Carbon pipe System with floor spreader

Weight : 7.6kg / 16.7lb **Height** : 54.5 to 161cm / 21.5 to 63.5" **Ball diameter** : 100mm **Section** : 2STAGE

LS-85M(2C) Carbon pipe System with mid-level spreader

Weight : 7.3kg / 16.1lb **Height** : 80.5 to 160.5cm / 31.5 to 63" **Ball diameter** : 100mm **Section** : 2STAGE

LS-100 Systems



LS-100

H100 / T102 / SP-6 / SC-7
System with floor spreader



LS-100M

H100 / T102 / BR-5S / FP-3 / SC-7
System with mid-level spreader



LS-100(2A)

H100 / T103 / SP-6 / SC-7
System with floor spreader

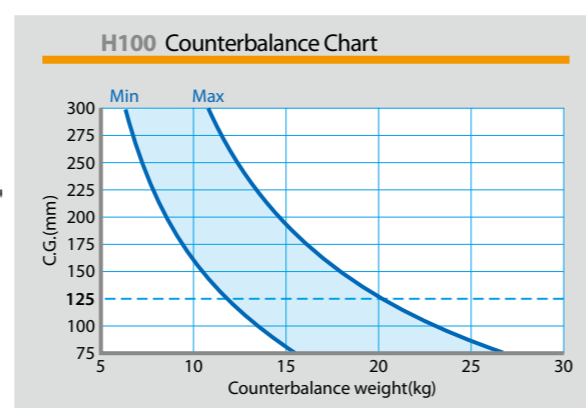


LS-100M(2A)

H100 / T103 / BR-5S / FP-3 / SC-7
System with mid-level spreader

H100

The H100 is LIBEC's first full-scale EFP head. It can hold up to 25kg / 55lb and is equipped with a unique single step counterbalance system that secures the optimum balance for the weight and tilt angle of the camera. Its unique drag system supports a wide range of professional needs such as capturing slow movement from a high speed subject, and shooting in -30°C / -22°F environment. It also has an LED so that horizontal lines may be seen in the dark. The one-touch slide plate slides 50mm / 2" forward and back. This easy-to-attach device together with the counterbalance system provides a very smooth camera balance adjustment. Together with a heavy duty tripod or pedestal, it also supports a wide range of shooting needs in the EFP field.



This outstanding H100 features more flexible applications. For instance, the H100 enables a prompter to be put on with pedestal P110. The picture shows a prompter connected with the LS-100PD(S).

H100

Counterbalance range : 11.5~20kg / 25.5~44lb
Payload : 25kg / 55lb **Counter balance** : CONTINUOUS **Drag mode** : CONTINUOUS
Weight : 4.6kg / 10.1lb **Tilt angle** : ±90° **Camera plate** : Sliding plate **Sliding range** : ±50mm / ±2"
Plate attachment : 3/8" screw × 2 **Spare screw** : 3/8" screw

LS-100 System with floor spreader

Weight : 11.1kg / 24.4lb **Height** : 85 to 155.5cm / 33.5 to 61" **Ball diameter** : 100mm **Section** : 1STAGE

LS-100M System with mid-level spreader

Weight : 11.1kg / 24.4lb **Height** : 101 to 156cm / 40 to 61.5" **Ball diameter** : 100mm **Section** : 1STAGE



The knob is designed for counterbalance adjustment with minimum effort.

LS-100(2A) System with floor spreader

Weight : 12.2kg / 26.8lb **Height** : 79 to 191cm / 31 to 75" **Ball diameter** : 100mm **Section** : 2STAGE

LS-100M(2A) System with mid-level spreader

Weight : 12.2kg / 26.8lb **Height** : 95 to 187.5cm / 37.5 to 74" **Ball diameter** : 100mm **Section** : 2STAGE

HEAVY DUTY KIT

JB-30U / T102 / DL-8



JB-30U

LIBEC's jib arm, JB-30U, provides you with free and smooth vertical and horizontal movement. Using the Under Mount supplied with the product helps you to create aggressive ground-hugging images. Set up takes only five minutes. Its simple and compact design enables you to shoot in a small room. The weight of the unit is only 10kg / 22lb. You can carry it around in the supplied soft carrying case. You can mount either a 75mm or 100mm head by using the supplied adaptor. You can use various types of cameras up to 20kg / 44lb (including the weight of the head).

JB-30U Option HM-1



Under Mount UM-3 is equipped as standard.



Good combination with ZC-9Pro at rear end position zoom control. AS-5 can be attached to the left side with LCD monitor application.

JB-30U Option WEIGHT KIT



The above photo is of the JB-30 shooting kit that includes a solid heavy-duty tripod and a steady dolly. It provides high stability even for outdoor projects.

1. Padded carrying case
2. Jib arm
3. 75mm adaptor
4. Adjusting weight × 1kg / 2.2lb
5. Under Mount



LIBEC's tracking rail system allows you to move smoothly along straight or curved lines. You can use this quality rail system with your LIBEC's tripod, pedestal or jib arm and achieve super high performance at a very affordable price.

TR-320

The TR-320 comes with durable 80cm / 31.5" aluminum rails to construct 320cm / 126" straight rails with an easy screw-in mechanism. The supplied dolly and your existing LIBEC products can be used together. An optional curved rail (CR-90) and extension rail (EX-160S) are also available to increase your flexibility.



Skids mounted at the dolly axle and inside of the rail slide prevent the dolly from derailing when it comes to the curve. Skids will also adjust skew on straight rails to provide smooth movement without any adverse affect on the image.



Shaft-bearing integral casters absorb shock and weight in order to provide super smooth movement on the rail without any adverse affect on the image.

CR-90

The CR-90 curves can be used with the TR-320 to give 2 different tracking set-ups. One is the 45° single section attachment and straight rail. The other is the 90° curve with extra track sections (EX-160S) which is a truly versatile system.



The CR-90 is easy to disassemble, and comes as 45° curved rail × 6pcs (4 outer and 2 inner)

Outer rail diameter: 168cm / 66.1" **Angle:** 90 degree
Weight: 3.5kg / 7.7lb **Material:** Aluminum

EX-160S

The EX-160S is an option for those who need to incorporate an extra straight rail. It includes 80cm / 31.5" × 4 pipes.

Extension length: 160cm / 63" **Weight:** 2.3kg / 5.1lb
Material: Aluminum

Pedestal Systems

The P110B and P110S utilize a double bearing system on the bottom in order to prevent the wobbling generated by quick vertical motion, and to provide smooth movement. Set up is very easy: unfold the dolly legs, set the pedestal column into the dolly, and use the air pump to adjust the air pressure to correspond to the weight of your camera. You can also adjust the air pressure with your camera attached. The air is tightly sealed, maintaining pressure for extended periods of time, and the lock knobs securely stabilize the unit for extensive shooting. Maximum load weight is 30kg / 66lb. It also can be used with the H100 head for faster system shooting. This high performance LIBEC pedestal system is the perfect solution for your indoor/outdoor shooting needs.



Large sized 125mm / 4.9" casters provide quick smooth movement.



P110B

Outside Broadcast Version



Tracking locking mechanism and cable guards come standard with the large-sized double-wheel 125mm / 4.9" casters.



P110S

Studio Version



P110B

Payload: 30kg / 66lb **Weight:** 15.2kg / 33.5lb **Height:** 81.5 to 157.5cm / 32 to 62"

P110S

Payload: 30kg / 66lb **Weight:** 18.5kg / 40.5lb **Height:** 81 to 157.5cm / 32 to 62"

Pedestal Systems



LS-85PD(B)

H85 / P110B / PH-3S



LS-100PD(B)

H100 / P110B / PH-3S



LS-85PD(S)

H85 / P110S / PH-3S



LS-100PD(S)

H100 / P110S / PH-3S

LS-85PD(B)

Payload: 17kg / 37.5lb **Weight:** 19.7kg / 43.5lb **Height:** 97.5 to 173.5cm / 38.5 to 68.5"

LS-100PD(B)

Payload: 25kg / 55lb **Weight:** 19.7kg / 43.5lb **Height:** 98.5 to 174.5cm / 38.5 to 68.5"

LS-85PD(S)

Payload: 17kg / 37.5lb **Weight:** 23kg / 50.5lb **Height:** 97 to 173cm / 38 to 68.5"

LS-100PD(S)

Payload: 25kg / 55lb **Weight:** 23kg / 50.5lb **Height:** 98 to 174cm / 38.5 to 68.5"



ZC-3DV

*LANC is registered trademark of Sony Corporation.

Zoom Control for DV / HDV cameras

The ZC-3DV is a universal controller for LANC* and Panasonic Mini DV or HDV cameras, simply change the switch.(PAT) Zoom speed is variable from slowest to fastest by a very sensitive thumb switch. Equipped with outlet cable. Versatile usage - ZC-3DV clamps on tripod pan handles, monopod, stabilizer and other similar devices. Lightweight and compact size. An incomparable combination of value and quality.

ZC-3DV Option Extension Cable
EX-330DV

Length : 330cm / 129.9"



ZC-9Pro

Zoom Control for ENG cameras

The ZC-9Pro can be used with both Canon and Fujinon lenses - simply change the switch. Zoom speed is variable from slowest to fastest by a very sensitive thumb switch. Versatile usage - ZC-9Pro clamps on tripod pan handles, monopod, stabilizer and other similar devices. Just insert the 8 pin connector cable to your lens.

ZC-9Pro Option

Extension Cable for ZC-9Pro, ZC-9EX
EX-230

Length : 230cm / 90.6"

12pin Adapter

A-12P

Use for 12pin connector



ZC-9EX

SONY XDCAM-EX series connectable zoom control

LIBEC is launching the ZC-9EX, a new zoom remote control for the Sony XDCAM-EX cameras with a unique connection interface. This control is also compatible with Fujinon and Canon lenses (you just need to remove the EX adaptor) and can be utilized to control the zoom for ordinary ENG cameras. Zoom speed is variable from slowest to fastest by a very sensitive thumb switch. Versatile usage - ZC-9EX clamps on tripod pan handles, monopod, stabilizer and other similar devices.



Tripods <ENG>

High rigidity and allows for low-angle shots.



T98

Uses carbon tubes which hold up well in cold climates.



T98C

Tripods <HEAVY DUTY>

In order to trim weight, magnesium is used in the construction of the studio shooting tripod, jib arm and other components.



T102

Can reach as high as 174cm / 68.5". The dual pipe structure provides high stability when stretched to maximum length.



T103

T98

Payload : 35kg / 77lb **Pipe material** : Aluminum **Weight** : 2.7kg / 5.9lb **Height** : 38.5 to 144.5cm / 15 to 57"
Base : 100mm **Section** : 2STAGE

T98C

Payload : 35kg / 77lb **Pipe material** : Carbon **Weight** : 2.3kg / 5.1lb **Height** : 38.5 to 144.5cm / 15 to 57"
Base : 100mm **Section** : 2STAGE

T102

Payload : 90kg / 198lb **Pipe material** : Aluminum **Weight** : 5.4kg / 11.9lb **Height** : 69 to 138.5cm / 27 to 54.5"
Base : 100mm **Section** : 1STAGE

T103

Payload : 90kg / 198lb **Pipe material** : Aluminum **Weight** : 6.5kg / 14.3lb **Height** : 63.5 to 174cm / 25 to 68.5"
Base : 100mm **Section** : 2STAGE

*Spreaders sold separately.

*The weight of a floor spreader is not included.

*The height is measured with a floor spreader attached. It will be different if a mid-level spreader and large rubber feet are attached.

BR-4 / FP-2

BR-4 Mid-level Spreader for T98 / T98C
 FP-2 Large rubber feet for T98 / T98C
 Ensure stable shooting used with BR-4



BR-5S / FP-3

BR-5S Mid-level Spreader for T102/T103
 FP-3 Large rubber feet for T102/T103
 Ensure stable shooting used with BR-5S



SP-2

Floor Spreader for T98 / T98C



SP-6

Floor Spreader for T102 / T103



DL-3

Dolly for T98 / T98C
 Standard dolly
Folded Length : 50cm / 19.7"
Weight : 4.1kg / 9lb



DL-5S

Dolly for T98 / T98C
 Versatile length dolly
Folded Length : 36.5cm / 14.3"
Weight : 4kg / 8.8lb



DL-8

Dolly for T102 / T103
 Standard application for OB and Studio.
Folded Length : 60cm / 23.6"
Weight : 6.2kg / 13.6lb



SC-7 / SC-9

Soft case
 SC-7 : Head + T102 / T103
 SC-9 : Head + T98 / T98C



PH-3S

Panhandle for Libec heads
 (Except TH-650DV, TH-950DV, LS-22DV and RS series)



PH-7

Extendable panhandle for Libec heads
 (Except TH-650DV, TH-950DV, LS-22DV and RS series)



AD-75

Adapter of Libec 75mm heads for 100mm ball diameter Tripods



LA-110

Low angle adapter
 Can be attached to dolly DL-8



AS-5

Accessory Support Equipment for LCD monitors, lightings and other accessories with Libec heads or jib arm



DV Series

Model	Payload	Counter balance	Drag mode	Tilt angle	Camera plate	Sliding range	Plate attachment	Spare screw	Weight	Height	Ball diameter	Section
TH-650DV	3kg / 6.5lb	FIX	FIX	+90° / -70°	Quick release plate	—	1/4" screw with video pin	—	3.2kg / 7lb	70 to 150cm / 27.5 to 59"	65mm	2STAGE
TH-950DV	4kg / 9lb	Off + 3position	FIX	+90° / -60°	Quick release plate	—	1/4" screw with video pin	—	3.7kg / 8.1lb	75 to 155cm / 29.5 to 61"	75mm	2STAGE
LS-22DV	4kg / 9lb	Off + 3position	FIX	+90° / -60°	Quick release plate	—	1/4" screw with video pin	—	3.9kg / 8.5lb	72 to 147cm / 28 to 58"	75mm	2STAGE

LS Series

Model	Payload	Counter balance	Drag mode	Tilt angle	Camera plate	Sliding range	Plate attachment	Spare screw	Weight	Height	Ball diameter	Section
LS-38(2A)	8kg / 17.5lb	FIX	FIX	+90° / -80°	Sliding plate	±40mm / ±1.6"	1/4" screw with video pin	3/8" screw	5.7kg / 12.5lb	53.5 to 160cm / 21 to 63"	75mm	2STAGE
LS-38M(2A)	8kg / 17.5lb	FIX	FIX	+90° / -80°	Sliding plate	±40mm / ±1.6"	1/4" screw with video pin	3/8" screw	5.4kg / 11.9lb	80 to 159.5cm / 31.5 to 63"	75mm	2STAGE
LS-55(2A)	10kg / 22lb	FIX	2STEP	±90°	Sliding plate	±40mm / ±1.6"	1/4" screw with video pin	3/8" screw	6.1kg / 13.4lb	52.5 to 159cm / 20.5 to 62.5"	75mm	2STAGE
LS-55M(2A)	10kg / 22lb	FIX	2STEP	±90°	Sliding plate	±40mm / ±1.6"	1/4" screw with video pin	3/8" screw	5.8kg / 12.8lb	79 to 159cm / 31 to 62.5"	75mm	2STAGE
LS-60(2A)	13kg / 28.5lb	FIX	2STEP	+85° / -65°	Sliding plate	±50mm / ±2"	1/4" and 3/8" screw	3/8" screw	7.2kg / 15.8lb	53.5 to 156cm / 21 to 61.5"	100mm	2STAGE
LS-60M(2A)	13kg / 28.5lb	FIX	2STEP	+85° / -65°	Sliding plate	±50mm / ±2"	1/4" and 3/8" screw	3/8" screw	6.9kg / 15.2lb	79 to 159cm / 31 to 62.5"	100mm	2STAGE
LS-70(2A)	15kg / 33lb	Free plus 3STEP	Free plus 3STEP	+90° / -75°	Sliding plate	±50mm / ±2"	3/8" screw × 2	3/8" screw	8kg / 17.6lb	54.5 to 160.5cm / 21.5 to 63"	100mm	2STAGE
LS-70M(2A)	15kg / 33lb	Free plus 3STEP	Free plus 3STEP	+90° / -75°	Sliding plate	±50mm / ±2"	3/8" screw × 2	3/8" screw	7.7kg / 16.9lb	80.5 to 156cm / 31.5 to 61.5"	100mm	2STAGE
LS-85(2A)	17kg / 37.5lb	CONTINUOUS	CONTINUOUS	±90°	Sliding plate	±50mm / ±2"	3/8" screw × 2	3/8" screw	8kg / 17.6lb	54.5 to 161cm / 21.5 to 63.5"	100mm	2STAGE
LS-85M(2A)	17kg / 37.5lb	CONTINUOUS	CONTINUOUS	±90°	Sliding plate	±50mm / ±2"	3/8" screw × 2	3/8" screw	7.7kg / 16.9lb	80.5 to 160.5cm / 31.5 to 63"	100mm	2STAGE
LS-85(2C)	17kg / 37.5lb	CONTINUOUS	CONTINUOUS	±90°	Sliding plate	±50mm / ±2"	3/8" screw × 2	3/8" screw	7.6kg / 16.7lb	54.5 to 161cm / 21.5 to 63.5"	100mm	2STAGE
LS-85M(2C)	17kg / 37.5lb	CONTINUOUS	CONTINUOUS	±90°	Sliding plate	±50mm / ±2"	3/8" screw × 2	3/8" screw	7.3kg / 16.1lb	80.5 to 160.5cm / 31.5 to 63"	100mm	2STAGE
LS-100	25kg / 55lb	CONTINUOUS	CONTINUOUS	±90°	Sliding plate	±50mm / ±2"	3/8" screw × 2	3/8" screw	11.1kg / 24.4lb	85 to 155.5cm / 33.5 to 61"	100mm	1STAGE
LS-100M	25kg / 55lb	CONTINUOUS	CONTINUOUS	±90°	Sliding plate	±50mm / ±2"	3/8" screw × 2	3/8" screw	11.1kg / 24.4lb	101 to 156cm / 40 to 61.5"	100mm	1STAGE
LS-100(2A)	25kg / 55lb	CONTINUOUS	CONTINUOUS	±90°	Sliding plate	±50mm / ±2"	3/8" screw × 2	3/8" screw	12.2kg / 26.8lb	79 to 191cm / 31 to 75"	100mm	2STAGE
LS-100M(2A)	25kg / 55lb	CONTINUOUS	CONTINUOUS	±90°	Sliding plate	±50mm / ±2"	3/8" screw × 2	3/8" screw	12.2kg / 26.8lb	95 to 187.5cm / 37.5 to 74"	100mm	2STAGE

Heads

Model	Payload	Counter balance	Drag mode	Tilt angle	Camera plate	Sliding range	Plate attachment	Spare screw	Weight
H60	13kg / 28.5lb	FIX	2STEP	+85° / -65°	Sliding plate	±50mm / ±2"	1/4" and 3/8" screw	3/8" screw	3.7kg / 8.1lb
H70	15kg / 33lb	Free plus 3STEP	Free plus 3STEP	+90° / -75°	Sliding plate	±50mm / ±2"	3/8" screw × 2	3/8" screw	4.5kg / 9.9lb
H85	17kg / 37.5lb	CONTINUOUS	CONTINUOUS	±90°	Sliding plate	±50mm / ±2"	3/8" screw × 2	3/8" screw	4.6kg / 10.1lb
H100	25kg / 55lb	CONTINUOUS	CONTINUOUS	±90°	Sliding plate	±50mm / ±2"	3/8" screw × 2	3/8" screw	4.6kg / 10.1lb

Pedestal Systems

Model	Payload	Counter balance	Drag mode	Tilt angle	Camera plate	Sliding range	Plate attachment	Spare screw	Weight	Height	Ball diameter
P110B	30kg / 66lb	—	—	—	—	—	—	—	15.2kg / 33.5lb	81.5 to 157.5cm / 32 to 62"	100mm
P110S	30kg / 66lb	—	—	—	—	—	—	—	18.5kg / 40.5lb	81 to 157.5cm / 32 to 62"	100mm
LS-85PD(B)	17kg / 37.5lb	CONTINUOUS	CONTINUOUS	±90°	Sliding plate	±50mm / ±2"	3/8" screw × 2	3/8" screw	19.7kg / 43.5lb	97.5 to 173.5cm / 38.5 to 68.5"	100mm
LS-85PD(S)	17kg / 37.5lb	CONTINUOUS	CONTINUOUS	±90°	Sliding plate	±50mm / ±2"	3/8" screw × 2	3/8" screw	23kg / 50.5lb	97 to 173cm / 38 to 68.5"	100mm
LS-100PD(B)	25kg / 55lb	CONTINUOUS	CONTINUOUS	±90°	Sliding plate	±50mm / ±2"	3/8" screw × 2	3/8" screw	19.7kg / 43.5lb	98.5 to 174.5cm / 38.5 to 68.5"	100mm
LS-100PD(S)	25kg / 55lb	CONTINUOUS	CONTINUOUS	±90°	Sliding plate	±50mm / ±2"	3/8" screw × 2	3/8" screw	23kg / 50.5lb	98 to 174cm / 38.5 to 68.5"	100mm

Tripods

Model	Payload	Pipe material	Weight	Height	Base	Section
T98	35kg / 77lb	Aluminium	2.7kg / 5.9lb	38.5 to 144.5cm / 15 to 57"	100mm	2STAGE
T98C	35kg / 77lb	Carbon	2.3kg / 5.1lb	38.5 to 144.5cm / 15 to 57"	100mm	2STAGE
T102	90kg / 198lb	Aluminium	5.4kg / 11.9lb	69 to 138.5cm / 27 to 54.5"	100mm	1STAGE
T103	90kg / 198lb	Aluminium	6.5kg / 14.3lb	63.5 to 174cm / 25 to 68.5"	100mm	2STAGE

*The weight of a floor spreader is not included.

*The height is measured with a floor spreader attached. It will be different if a mid-level spreader and large rubber feet are attached.