

### 5 Channel SDI to CVBS Converter

#### Description

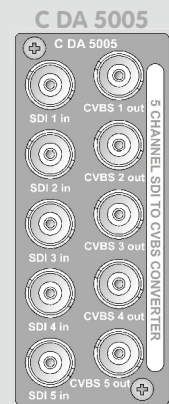
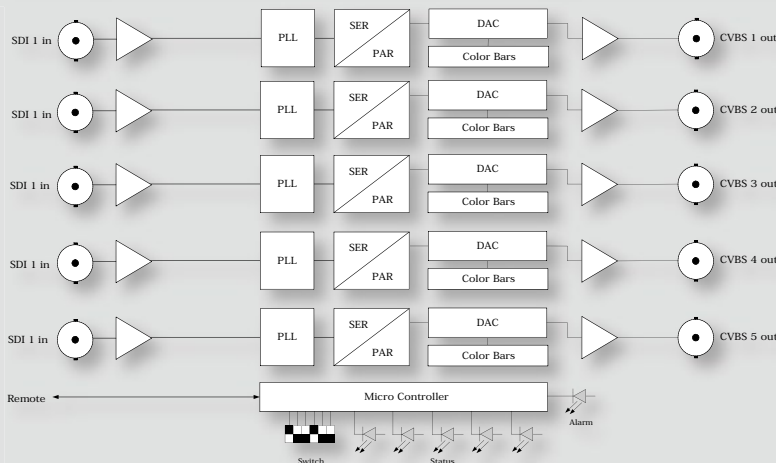
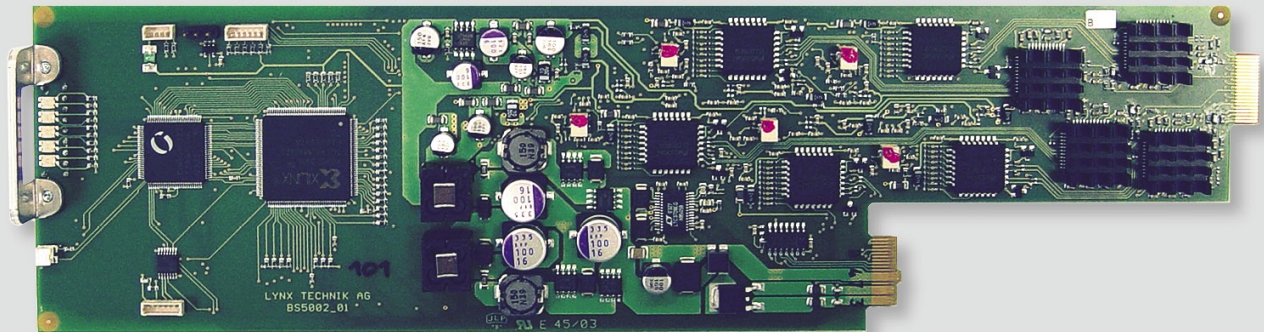
Featuring 5 independent D/A conversion channels, the C DA 5005 provides a very high density and cost effective solution for multichannel SDI monitoring applications.

Each channel has a single SDI input and provides one CVBS (composite) analog output per channel. Each channel is completely independent from the others and all support dual standard operation.

Microprocessor control and on board flash ram enable configurations and settings to be stored within the module (through power cycles and module removal). Local control capability is provided via the integrated dip switch. Remote control, status monitoring and error reporting is possible when using the LYNX control system.

#### Features

- 5 independent channels of Video D/A conversion
- Each channel is dual standard operation (auto detect)
- NTSC or PAL analog composite outputs (outputs follow input standard)
- Internal 2x oversampling (27MHz) with 8 bit quantization
- Internal color bars - independent for each channel
- Configurable multichannel alarm
- Microprocessor controlled with internal flash ram for storing configuration
- Remote control, status monitoring and error reporting possible when used with LYNX control system
- Full SNMP support when used with master controller option
- Hot swappable



Backplane

### 5 Channel SDI to CVBS Converter

#### Specifications

##### Video Inputs

Signal Type	Serial digital video SMPTE 259M-C (270Mbit)
Input standards	Dual standard (525/625) auto detect
No. Of inputs	5 (one for each channel)
Connector	BNC
Impedance	75 Ohm
Return Loss	>15 dB (270MHz)

##### Video Outputs

Signal Type	Analog composite video (CVBS)
Output standards	NTSC (M/N) or PAL (B/D/G/H/I/N). Output standard follows input line standard [525 = NTSC / PAL = 625]
No. Of outputs	5 (one for each channel)
Connector	BNC
Impedance	75 Ohms
Output level	1v pp
Return Loss	> 35dB (5.75MHz)

##### Performance

Quantization	8 bits
Sampling	27 MHz (2x oversampling)
Signal to noise	> 56 dB

##### Operating Modes

Conversion	D/A conversion for 5 independent input channels
TV Standard	525/625 [NTSC/PAL] auto detect for each channel
Test	Internal color bars (one for each channel)

##### Electrical Specifications

Operating Voltage	12 VDC
Power Consumption	10 W
Safety	IEC 60950/ EN 60950/ VDE 0805

##### Mechanical

Size	283mm x 78mm
Weight	CardModule 120g, connector plate 50g

##### Ambient

Temperature	5°C to 40°C Maintaining specifications
Humidity	90% Max non condensing

Specifications subject to change

#### Settings and Control

##### Local Settings

Dip Switch function	Select between <i>Channel Status</i> mode or <i>Alarm Enable</i> mode
No input default	Select between <i>Color Bars</i> or <i>Black</i> output if input is lost
Test	Select color bars ON / OFF for each channel
Alarm Enable	Select channels (1..5) for general alarm indicator

##### Settings Available from Control System

All local settings replicated with control system GUI. No additional control provided

##### On Board Indicators / LEDs

Channel 1. Input : Present / Missing / Color Bars
Channel 2. Input : Present / Missing / Color Bars
Channel 3. Input : Present / Missing / Color Bars
Channel 4. Input : Present / Missing / Color Bars
Channel 5. Input : Present / Missing / Color Bars
General Alarm Indicator – 3 Color

#### Ordering Information

Model #	Part Number	Description	Includes
C DA 5005	6155008221	5 Channel SDI to CVBS Converter	CardModule, Rear termination Panel, + Mounting Screws, and Reference Manual