

# R FR 3610

## Testor Battery Hard Case 2

NEW

**Rugged, complete self powered solution for demanding mobile applications.**

This incredibly strong moulded ABS plastic case provides full watertight, airtight and crush proof protection. The Testor is securely mounted and operated while in the case. A built in hi power Lithium Polymer rechargeable battery provides six hours of continuous running time. The integrated AC supply with a separate Smart Charger lets you charge the battery while using the Testor on the AC power.

Also includes a integrated controller with USB port for connection to a PC for setup and configuration. Integrated fan provides maximum cooling for use in the most demanding conditions.

Designed for the real road warrior this case has applications wherever harsh treatment and difficult operating locations are expected.



## Features

Compact, robust ABS plastic case providing watertight, airtight and crush proof protection.



Permanent and secure mounting of Testor.

Integrated hi power Lithium Polymer rechargeable battery with built in smart charger. Six hour continuous running time with no battery memory effect.

Battery level meter and charging status indicators.

Separate integrated AC supply.

Integrated USB controller with software for PC control and configuration.

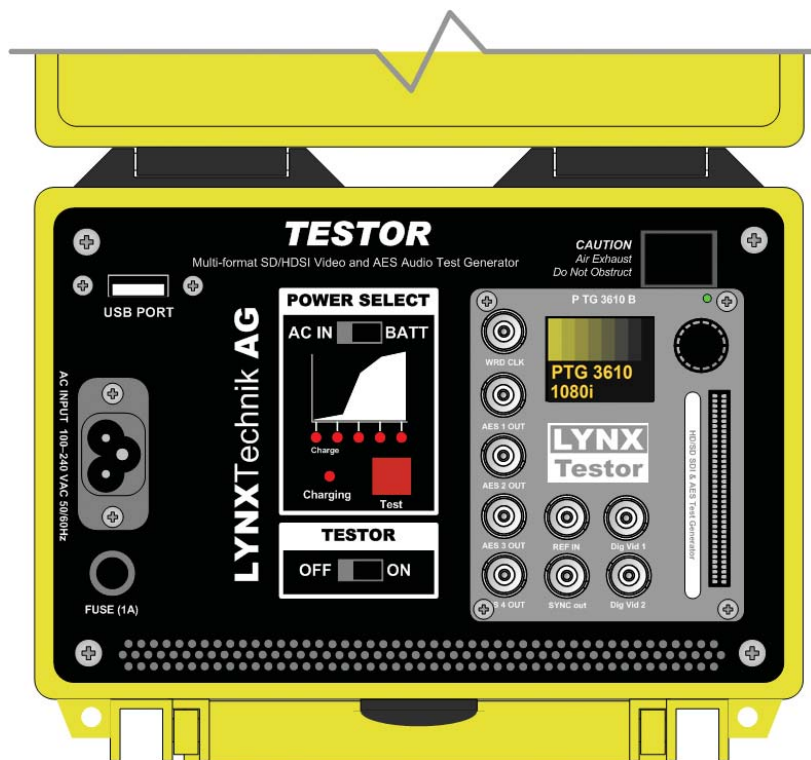
Integrated cooling fan.

Automatic pressure equalization valve (removes risk of case bursting open on aircraft during transportation)

Carrying handle.

**Note.** Upgrade customers will need to return the Testor for factory retrofit into the case.

**Genuine custom PELICAN™ case**



Testor not included

**LYNXTechnik AG**  
Broadcast Television Equipment  
[www.lynx-technik.com](http://www.lynx-technik.com)

Headquarters  
**LYNX Technik AG**  
Brunnenweg 3  
D 64331 Weiterstadt,  
Germany  
+49 (0) 6150 1817 0

US Office  
**LYNX Technik Inc**  
26366 Ruether Ave  
Santa Clarita, CA 91350  
USA  
(661) 251 8600