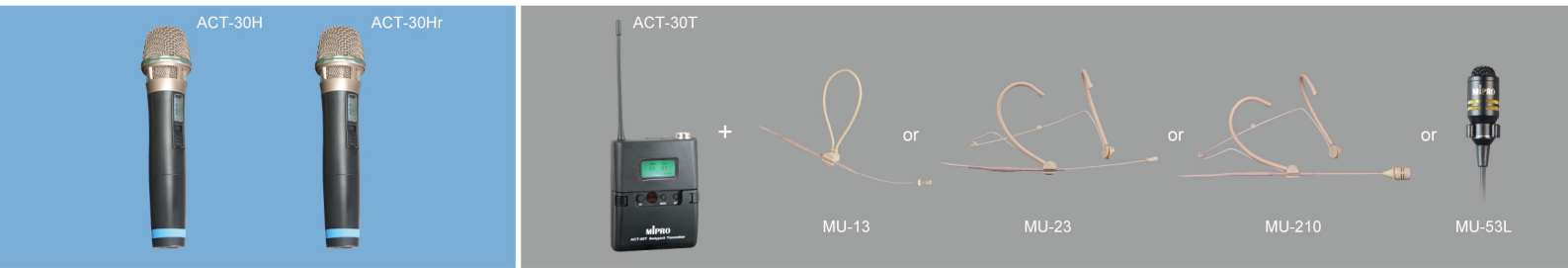


# MA-708 Portable Sound System

## Premium Portable Audio System for Medium Events

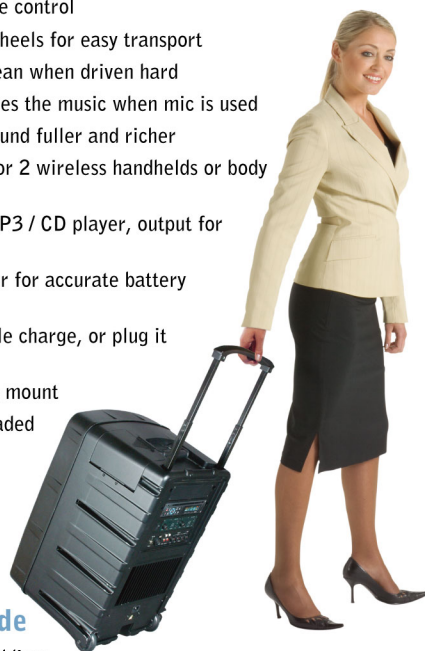


### The Future Benchmark

MIPRO, the worldwide leader in portable wireless public address technology, introduces the new MA-708. The MA-708 is compact, lightweight, powerful and can be used almost anywhere. MIPRO MA-708 is the benchmark by which all other portables will be measured.

### Key Features

- Extremely rugged design delivering a 190-watt clear and powerful sound for crowds up to 1,000
- Class-D amplifier drives 1" titanium compression driver and 8" woofer speakers
- Up to 4 optional plug & play diversity receiver modules and CD / USB player with remote control
- Industry's easiest and fastest channel set-up using MIPRO AutoScan and ACT sync technology
- Industry's only MTM-90 wireless interlinking transmitter option to interlink multiple MIPRO MA-708 portables wirelessly to extend transmission range and expand coverage
- Master Volume Control can be manually controlled or wireless via an innovative, industry's only ACT-30Hr Handheld Transmitter Microphone instead of a separate control
- Retractable handle and sturdy wheels for easy transport
- Active limiter – keeps sounds clean when driven hard
- A voice priority feature that mutes the music when mic is used
- Echo effect control so singers sound fuller and richer
- Built-in storage compartments for 2 wireless handhelds or body transmitters
- Line-input for external iPod / MP3 / CD player, output for external recordings
- A smart 4-segment battery meter for accurate battery reading and charging status
- Operates up to 8 hours on a single charge, or plug it in for continuous use
- Suitable for tripod, floor or desk mount
- Weights only 16 kg / 35 lbs – loaded



### Ideal applications include

- Schools, church services and weddings
- Corporate presentations, seminars and meetings
- Sporting events, press conferences, auctions
- Shopping centre presentations and promotions
- Aerobics / Fitness, social clubs, hotels, rallies
- Military, law enforcement, fire / rescue events

## Model shown with accessories



- Molded Fixed Handle
- Retractable Carry Handle
- Transmitters Storage
- Optional MRM-72 receivers or MTM-90 transmitter
- Optional CD/USB Player & SD Recorder
- Optional 1 or 2 MRM-70 receivers
- Power Switch
- Battery Charge Indicators
- 6.3 mm (1/4 ") Mic-In
- Echo Control on wireless mics
- Extension Speaker Socket
- Tone Control
- Balanced XLR Mic-In
- Microphone Volume Control
- Voice Priority Switch
- Line-In RCA Jack
- Line-Out RCA Jack
- Line-In VolumeControl
- Heat Sink
- Master Volume & Indicators
- AC Power Socket
- DC Power Socket
- Built-in Rechargeable Batteries
- Sturdy Wheels
- Stand Adapter

## Optional Accessories & Replacement Parts

### UHF 16-Channel Diversity Receiver Modules



Single MRM-70

Dual MRM-72

### CD/USB Player Module



CDM-2 (plays only)

DPM-3 (plays and records)

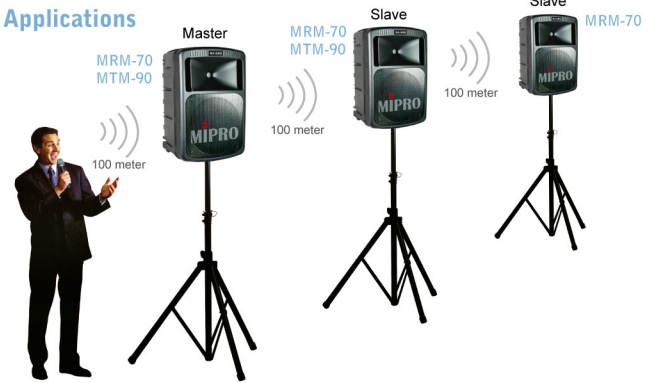
### UHF 16-Channel Wireless Interlinking Transmitter

Interlinks multiple MIPRO MA-708 portables wirelessly to expand coverage and extend range



MTM-90

### Applications

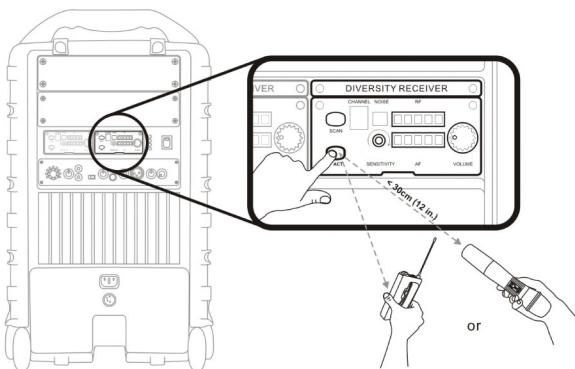


**MB-70** Rechargeable Battery (12V / 4.5AH) (2 MB-70 required)

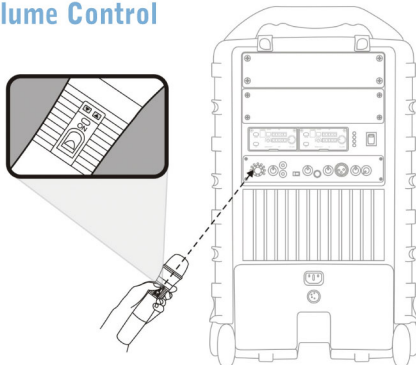
**SC-75** Storage Cover with side pouch

**MA-708EXP** Passive MA-708 extension speaker

## ACT "SYNC"



## Wireless Volume Control



### MA-708 Specifications:

Power Output	190W(Max)
T.H.D.	<1%
Frequency Response	50Hz~18kHz
Speakers	1" Compression Driver, 8" woofer
Crossover Network	2.8KHz /-12dB Oct
CD / USB Player Module	CDM-2 or DPM-3
Audio Inputs	Balanced, Unbalanced MIC & LINE-in RCA Jack
Audio Outputs	Unbalanced Line RCA jack
Master Volume Control	Manually or Wirelessly via ACT-30Hr
Installation	Speaker stand, flat surface or retractable handle & wheels
Power Supply	AC: Built-in 100~240V AC switching power supply DC & Battery: 24~32 DC, 12V/4.5AH rechargeable gel cell battery
Charge Time	Up to 8 hours (automatic charging management)
Standby Time	Up to 7 hours
Receiver Modules	MRM-70 or MRM-72 (optional)
Wireless Microphones	ACT-30H / 30Hr Handheld; ACT-30T Bodypack (optional)
Wired Microphone	MM-107 Wired Dynamic Microphone (optional)
Dimensions (mm / in.)	336 / 13.2(W) x 545 / 21.5(H) x 325 / 12.8(D)
Weight (kg / lbs.)	16.3 / 36 (loaded)
Approvals	Complies with worldwide telecommunication and safety regulations

# MIPRO®

www.mipro.com.tw | mipro@mipro.com.tw