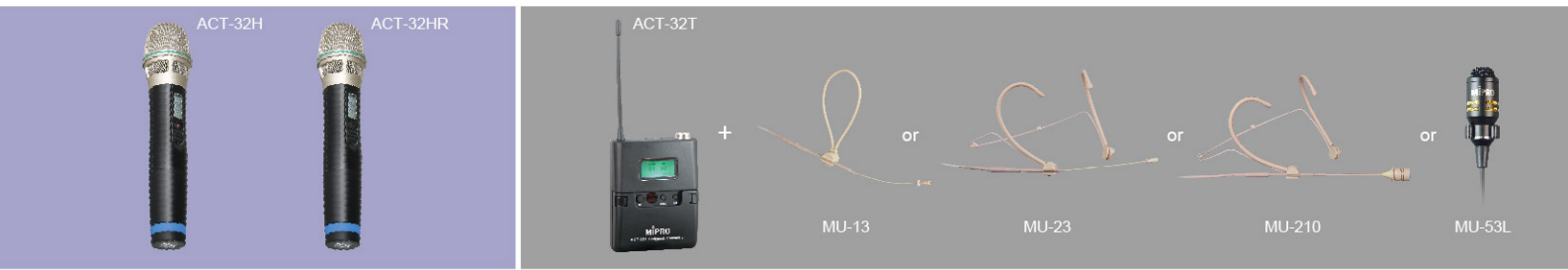


# MA-808 Portable Sound System

## Flagship Portable Audio System for Large Events

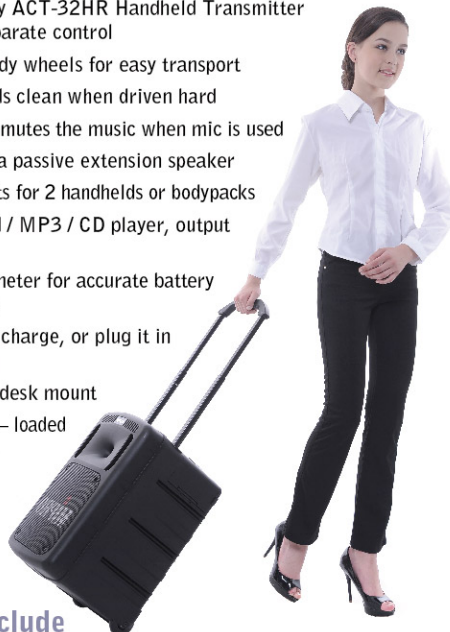


### The solution for large indoor & outdoor events is here!

MIPRO, the worldwide leader in portable wireless public address technology, introduces MA-808. The MA-808 is compact, lightweight, powerful and can be used almost anywhere.

#### Key Features

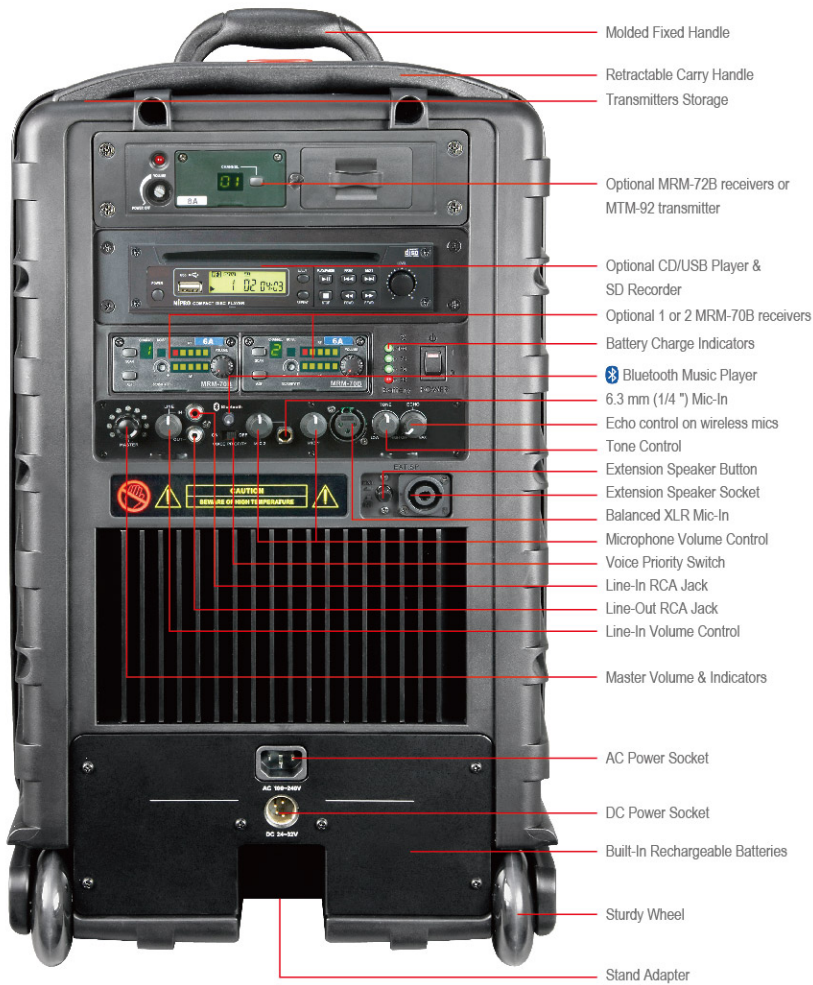
- Huge 267-watt power and up to 123dB SPL of loud and clear sound for crowds up to 2,000
- Class-D & AB amplifiers drive 1.5" titanium compression driver and 10" neodymium woofer speakers
- Up to 4 optional plug & play diversity receiver modules and CD / USB player with remote control
- Industry's easiest and fastest channel set-up using MIPRO AutoScan and ACT sync technology
- Built-in Bluetooth music player for wireless audio streaming
- Industry's only MTM-92 wireless interlinking transmitter option to interlink multiple MIPRO MA-808 portables wirelessly to extend transmission range and expand coverage
- Master Volume Control can be manually controlled or wireless via an innovative, industry's only ACT-32HR Handheld Transmitter Microphone instead of a separate control
- Retractable handle and sturdy wheels for easy transport
- Active limiter – keeps sounds clean when driven hard
- A voice priority feature that mutes the music when mic is used
- Speakon-connector powers a passive extension speaker
- Built-in storage compartments for 2 handhelds or bodypacks
- Line-input for external iPod / MP3 / CD player, output for external recordings
- A smart 4-segment battery meter for accurate battery reading and charging status
- Operates up to 6 hours on a charge, or plug it in for continuous use
- Suitable for tripod, floor or desk mount
- Weights only 20.5 kg / 45 lbs – loaded



#### Ideal applications include

- Schools & houses of worship events
- Corporate presentations, seminars and meetings
- Military, law enforcement, fire / rescue events
- Sporting events, press conferences, auctions, trade shows
- Hotels, fitness clubs, musical productions, rallies, theme parks

## Model shown with accessories



- Molded Fixed Handle
- Retractable Carry Handle
- Transmitters Storage
- Optional MRM-72B receivers or MTM-92 transmitter
- Optional CD/USB Player & SD Recorder
- Optional 1 or 2 MRM-70B receivers
- Battery Charge Indicators
- Bluetooth Music Player
- 6.3 mm (1/4") Mic-In
- Echo control on wireless mics
- Tone Control
- Extension Speaker Button
- Extension Speaker Socket
- Balanced XLR Mic-In
- Microphone Volume Control
- Voice Priority Switch
- Line-In RCA Jack
- Line-Out RCA Jack
- Line-In Volume Control
- Master Volume & Indicators
- AC Power Socket
- DC Power Socket
- Built-In Rechargeable Batteries
- Sturdy Wheel
- Stand Adapter

## Optional Accessories & Replacement Parts

### UHF 16-Channel Diversity Receiver Modules



Single MRM-70B



Dual MRM-72B

### CD / USB Player Module



CDM-2 (plays only)



DPM-3 (plays and records)

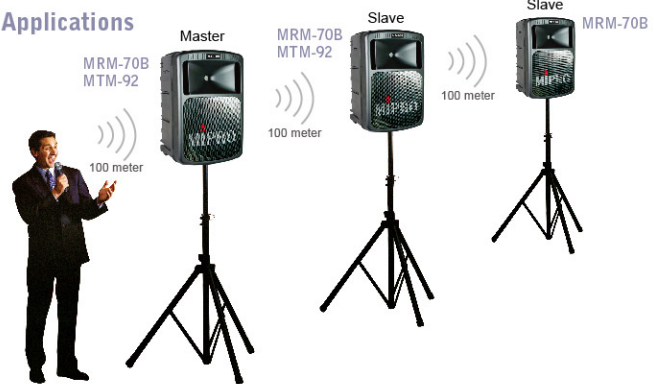
### UHF 16-Channel Wireless Interlinking Transmitter

Interlinks multiple MIPRO MA-808 portables wirelessly to expand coverage and extend range



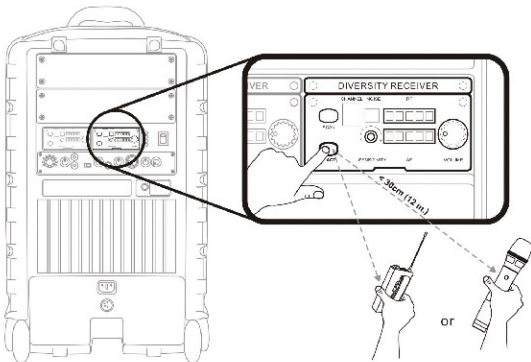
MTM-92

### Applications

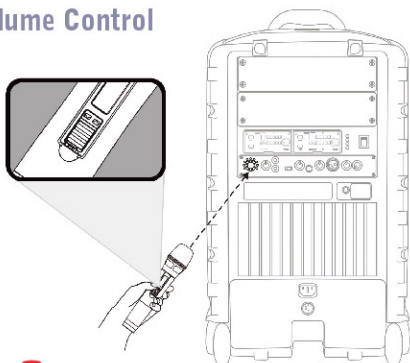


- MB-70** Rechargeable Battery (12V / 4.5AH) (2 MB-70 required)
- MB-80** 12.8V rechargeable LFP battery case
- SC-80** Storage Cover with side pouch
- MA-808EXP** Passive MA-808 extension speaker

## ACT "SYNC"



## Wireless Volume Control



## MA-808 Specifications:

Power Output	190W (Max) , Class D. 77W (Max) , Class AB.
T.H.D.	<1%
Frequency Response	50Hz~18kHz
Treble Speaker	1.5" Titanium Compression Driver
Bass Speaker	10" Neodymium Cone Driver
CD / USB Player Module	CDM-2 or DPM-3
Audio Inputs	Balanced, Unbalanced MIC & LINE-in RCA Jack
Audio Outputs	Unbalanced Line RCA jack
Master Volume Control	Manually or Wirelessly via ACT-32HR
Installation	Speaker stand, flat surface or retractable handle & wheels
Power Supply	AC: Built-in 100~240V AC switching power supply DC & Battery: 24~32 DC, 12V/4.5AH rechargeable gel cell battery (MB-70x2) or optional MB-80x2
Charge Time	Up to 8 hours (automatic charging management)
Standby Time	Up to 6 hours
Receiver Modules	MRM-70B or MRM-72B (optional)
Wireless Microphones	ACT-32H / 32HR / 32HC Handheld; ACT-32T / 32TC Bodypack (optional)
Wired Microphone	MM-107 Wired Dynamic Microphone (optional)
Dimensions (mm / in.)	360 / 14.2(W) x 560 / 22(H) x 350 / 13.8(D)
Weight (kg / lbs.)	20.5 / 45 (loaded)
Approvals	Complies with worldwide telecommunication and safety regulations

# MIPRO®

www.mipro.com.tw | mipro@mipro.com.tw

Design and specifications are subject to change without notice.  
Do not reproduce or redistribute without consent. MA 015/10