

For Tapeless Camcorders



NEXTO VIDEO STORAGE pro NVS2501



Portable Backup Storage Device

Back up from Various Memory cards

·SxS ·P2/P2E (Bundled adapter) ·CF ·SDXC/SDHC/MMC/MMCPlus/MS

Supports SDXC (exFAT File System)

Preview Video & Photo clip

·XDCAM MPEG2 ·AVC-Intra100 / 50 ·Ikegami MPEG2 Full HD ·Canon MPEG2 Full HD / MOV(H.264) ·AVCHD ·HDV
·Convergent Design MPEG2 Full HD ·JVC MPEG2 Full HD ·DVCCAM ·DVCPRO ·DVCPRO 50 ·DVCPRO ·DV

Making a secondary copy to USB hard drive

·Copy data from an USB Card reader or an USB memory or a GFPACK(less than 128GB)

Designed for data safety Shock protection

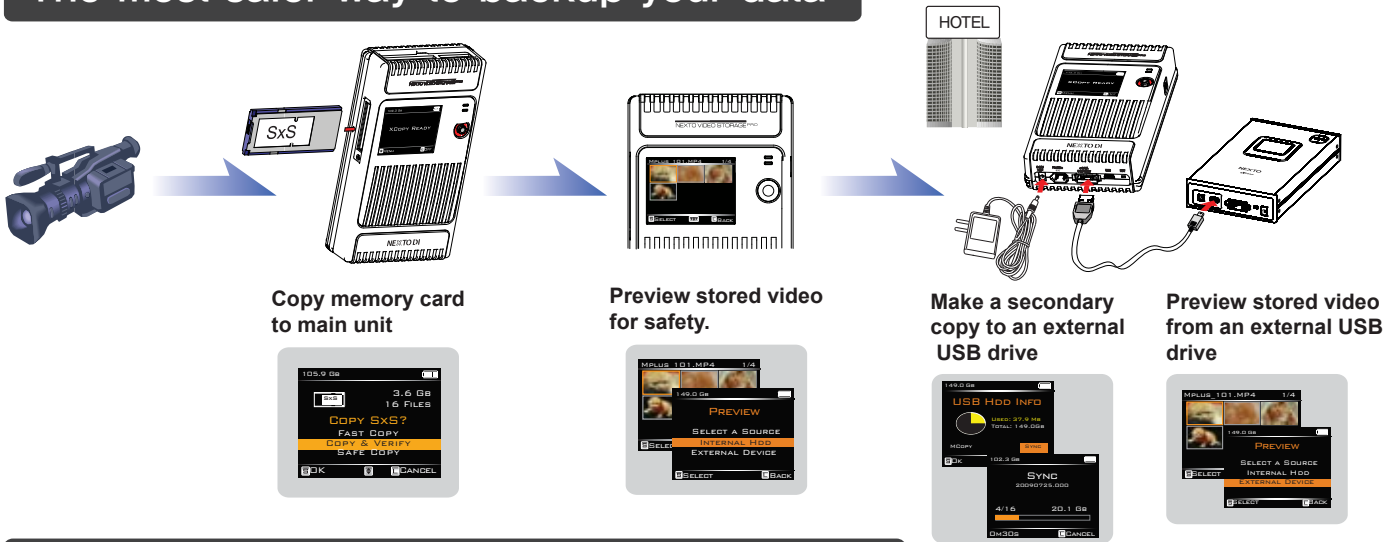
·Success or Failure feedback of previous backup operation ·Recover data from bad sectors
·Shock protection(Built-in FREE-FALL Sensor / Supplied with Rubber Bumpers)

Multi-Copy onto two separate HDD at the same time

Buring a Blu-ray Disc

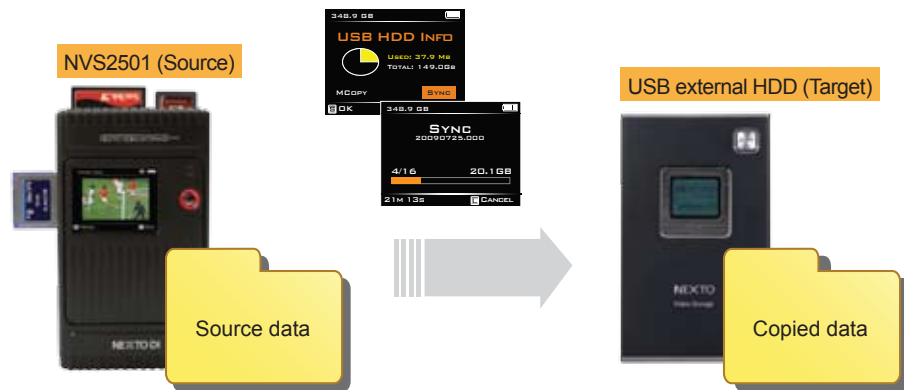
·supports the burning of BD-R or BD-RE

The most safer way to backup your data



Making a secondary copy to USB hard drive

User can generate ("Sync") a secondary copy onto external USB HDD.
Export internal data to an external USB hard drive without needing a laptop.
Each time you plug-in a external USB hard drive to NVS2501, it syncs at any files recorded since the last sync, will be transferred. Automatically compare the video folders by file names and sizes.



Copy from USB card reader

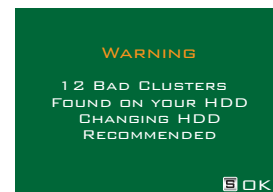


If the drive capacity is less than 128GB, the NVS2501 can copy data from an USB memory or from an USB card reader or from a GFPACK to the internal hard drive.

Success (or Failure) feedback

After successful completion of copying process, NVS2501 shuts down automatically after few seconds to reserve battery power.
Next time you power on the NVS2501, it displays a result of previous backup status for helping you to determine whether you can safely delete the contents of memory card.

During the boot sequence, NVS2501 displays warning if there were any bad sector found on internal hard drive during previous operation.



Using the NVS2501 as a hard drive

Supports high-speed data transfer to NLE System.

Transfer Speed by interfaces



Interface	Speeds(MB/s)	Time(32GB)
eSATA	80MB/s	6m66s
FireWire800	75MB/s	7m10s
USB 2.0	33MB/s	16m17s

Versatile Power Option

Its built-in internal battery makes NVS2501 the perfect companion for field backup need.
 NVS2501 can be powered by Power adapter, Interface cables, AA Battery holder or External battery

Charging Time

Approx 5 hours via power adapter\FireWire 800
 Approx 9 hours via interface cable
 Approx 10 hours via AA battery holder



NVS2501 Technical Specifications

Device	NEXTO VIDEO STORAGE pro	
Model Number	NVS2501	
LCD	2.4" Color TFT LCD: 320*240, 64K colors	
Video Preview	AVC Intra 100 / AVC Intra 50 AVC HD Canon MPEG-2 Full HD / MOV(H.264) Convergent Design MPEG-2 Full HD DVCCAM / DVCPRO / DVCPRO 50 / DVCPRO / DV HDV (MPEG-2 Long GOP) Ikegami MPEG-2 Full HD (MPEG-2 Long GOP) JVC MPEG-2 Full HD (MPEG-2 Long GOP) XDCAM MPEG-2 Full HD (MPEG-2 Long GOP)	
Card Slots	SxS	ExpressCard/34 Compatible, Follows SxS Spec.
	CF	CF Type 1/2, Micro Drive
	3in1	SD/ SDHC/ SDXC/ MMC/ MMCPlus/ MemoryStick/ MS Pro-HG/ MS Pro MagicGate
Backup Speed(Avg.)	SxS : 90MB/sec P2 : 70MB/sec CF : 80MB/sec SDHC/SDXC : 22MB/sec SDHC/SDXC UHS-1 : 60MB/s MSPro : 12MB/sec	
External Harddrive Support	USB 2.0 : 480Mbit/sec	
Battery	Internal : 3.7V 4600mA rechargeable Li-Poly battery (120 min) * Rechargeable by AC adapter, USB cable, FireWire 9-9pin cable and Car charger charger External : Battery holder for recharging Internal battery with four standard AA cell batteries (40 min)	
AC Power Adapter	Input : 100-240V AC Output : 12V/1A DC	
Bus Power Operation	Operate with USB bus power or FireWire 800 (IEEE 1394b) cable (9-9 pin) power	
Computer Interface	eSATA : 3.0Gbit/sec USB2.0 : 480Mbit/sec FireWire 800(IEEE 1394b) : 800 Mbit/sec	
File System Format	Internal hard drive : FAT32/exFAT Memory card (including SxS) : FAT12/16/32/exFAT	
OS Compatibility	Windows 7/VISTA/XP/2000/ME MAC OS 9.2 or above, Linux2.4.18 or above	
Dimensions	154mm * 91mm * 33mm (6.1inches * 3.6inches * 1.3inches)	
Weight	430g/15.1oz (with Hard drive)	
Contents	NVS2501 Main unit / AC power adapter / Shock protection rubber jacket / Manual / eSATA cable / USB cable / FireWire 800 cable(9-9 pin) / AA battery holder / Car charger cable / CardBus memory card adapter	