

Panasonic

BUSINESS

AK-UB300GJ

4K Multi Purpose Camera

Compact and light 4K Multi Purpose Camera



* Lens sold separately

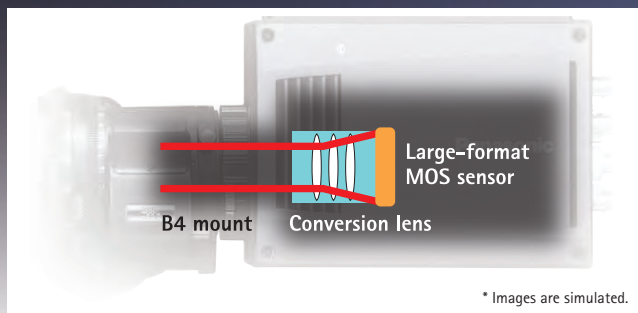
4K Multi Purpose Camera with UHD/HD Simultaneous Output and 2/3 type lens mount



This 4K multipurpose camera shows its potential in a wide range of situations, from live sports and other event broadcasting to studio recording and aerial shooting. Two sensitivity modes (high sensitivity and normal) can be selected according to the shooting environment. The usability has also greatly improved with the newly developed haze reduction technology and transmission with a single cable operation is possible when the 12G Output Board is replaced with 3G TICO Output Board. The camera is also equipped with the focus assist function as well as the HD cropping function from 4K video. Moreover, it can perform HD-IP streaming output and IP control so the system can be centrally managed with Panasonic AW series system cameras, enabling flexible and expandable utilization.

■ Newly Developed 4K Optical System

The new 4K large format sensor can use 2/3 type lens without an adapter, and the conversion lens designed for large format sensor realizes the excellent video quality. Its new optical system makes maximum use of incident light to achieve the wide dynamic range.



■ UHD/HD Simultaneous Output

Supports simultaneous UHD/HD output, which enables to select the video output according to the application. Following formats are supported.

Supported formats

UHD	3840 x 2160/60p, 3840 x 2160/59.94p, 3840 x 2160/29.97p, 3840 x 2160/23.98p, 3840 x 2160/29.97PsF, 3840 x 2160/23.98PsF, 3840 x 2160/50p, 3840 x 2160/25p, 3840 x 2160/25PsF
UHD_CROP	1080/59.94p_CROP, 1080/59.94i_CROP, 1080/50p_CROP, 1080/50i_CROP
HD	1080/60p, 1080/59.94p, 1080/59.94i, 1080/29.97PsF, 1080/23.98PsF, 1080/23.98p, 1080/50p, 1080/50i, 1080/25PsF, 720/60p, 720/59.94p, 720/50p

Cropping Function

In addition to capturing the entire scene, up to three specified areas in the scene can be cropped and displayed. The area specified can be instantly switched using the controller.

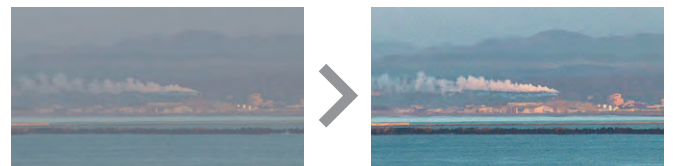


Select and output one of three areas

* Images are simulated.

Haze Reduction Function

For installations in places where haze tends to occur, this function performs correction for a subject with low contrast to make the image clearer. Three settings can be selected for the compensation level.



* Images are simulated.

Flash Band Compensation*1

Using a high-precision flash band detection and compensation function for the camera signal processing LSI, enables elimination of the flash band phenomenon (light and dark areas appearing in the same frame) that occurs when a flash goes off during shooting.

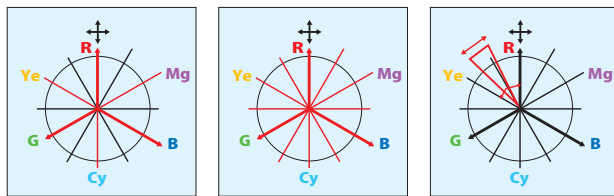
Images of flash band compensation



* Images are simulated.

Wide Range of Color Correction Functions

Color saturation and hue can be finely adjusted individually by 12-axis color correction and linear matrix. Moreover, an independent skin color adjustment function (SKIN CORRECTION) enables fine color expression.



Linear matrix

12-axis color correction

Skin color correction

Dynamic Range Stretch (DRS) Function*1

The DRS function automatically suppresses blocked shadows and blown highlights. When dark and bright areas are present in the same scene, such as when looking outside from indoors, DRS can maintain a high level of gradation expression in dark, bright, and intermediate tones. This minimizes blocked shadows, blown highlights, and washed out colors. As a result, it is possible to obtain in real time video with a visually wide dynamic range.

Images showing DRS (Dynamic Range Stretch) effect



* Images are simulated.

Intelligent Automatic Adjustment Function

•Auto Tracking White Balance Function

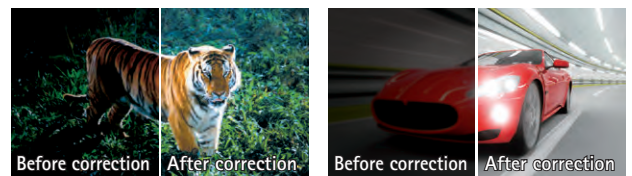
This function automatically adjusts the white balance as the color temperature gradually changes when shooting outdoors. Images can be automatically adjusted according to the subject or time of day.



* Images are simulated.

•Automatic Gain Control (AGC)

In addition to automatic iris control, continuous automatic variable gain control (-6 dB to 36 dB) is also possible. In addition to normal mode, modes with priority on movement (SPORTS mode) and image quality (SN mode) can also be selected.



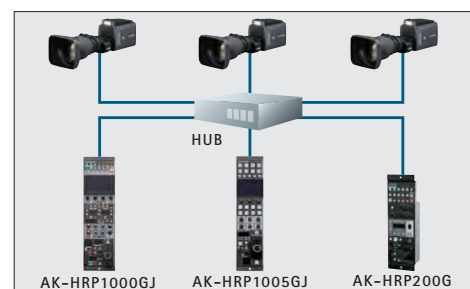
Automatically controls variable gain in dark scenes

Movement is given priority for subjects in motion

* Images are simulated.

IP Control from Remote Operation Panel and Remote Camera Controller

Serial control and IP control can be performed from the camera by connecting an AK-HRP200G/AK-HRP1000GJ/AK-HRP1005GJ Remote Operation Panels (ROP) and AW-RP50/AW-RP120G Remote Camera Controller. The compact operation panel enables smooth remote control.



Scan Reverse Shooting

Image can be displayed reversed vertically or horizontally by setting this mode.

Linkage with NewTek AutoLink for Panasonic PTZ Software

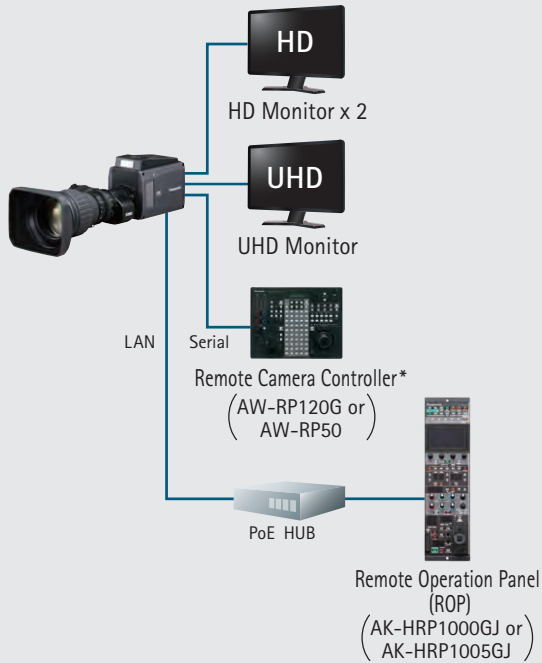
"NewTek AutoLink for Panasonic PTZ"*2, can be downloaded from the website to allow Panasonic professional cameras equipped with IP streaming to be automatically detected on the network from a NewTek TriCaster® or IP series Video Mix Engine produced by NewTek, Inc., enabling direct use of IP streaming from cameras.

*1: Cannot be utilized when the camera system is in UHD or UHD CROP mode.

*2: For details, see the Panasonic website. (http://pro-av.panasonic.net/en/products/newtek_autolink/).

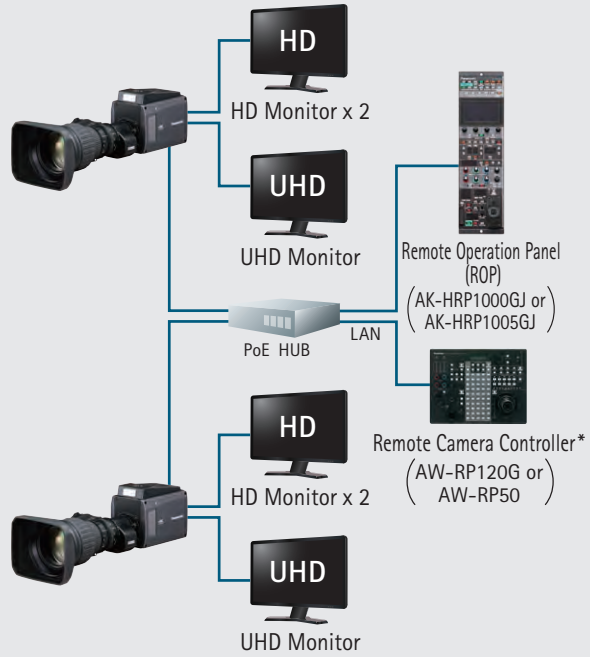
System Configuration

One camera and one controller



*Camera control and cropping are available.

Multiple cameras from a single controller



Optional Products

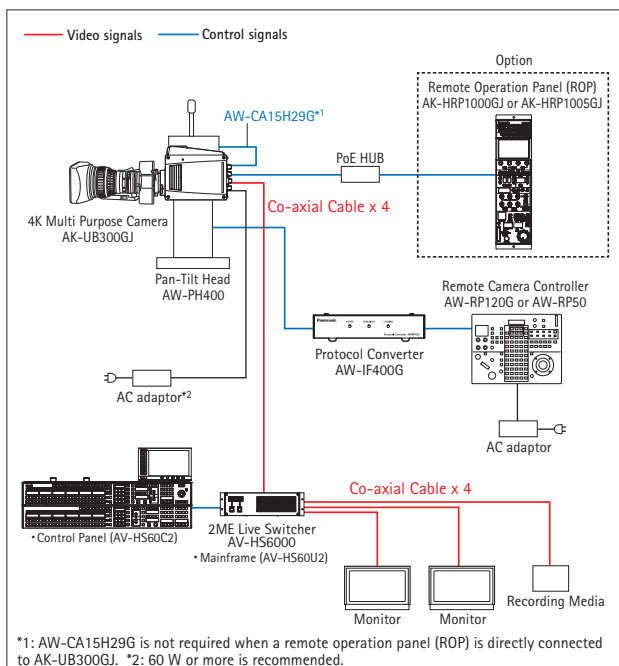
As of April, 2017

Indoor pan-tilt head suitable for production work requiring quiet and fast revolution.

Pan-Tilt Head AW-PH400



Example of system configuration with AW-PH400 Pan-Tilt Head connected



* Some functions are restricted when AW-PH400 Pan-Tilt Head is connected. * When using AW-PH400 with AK-UB300GJ, please contact your regional dealer.

Option Boards



12G Output Board AK-UHD12G **NEW**

Scheduled for release in June 2017

Output: UHD: 2 outputs (12G) or 1 output (3G x 4)
HD: 2 outputs



3G TICO UHD Output Board AK-UTS03G **NEW**

Scheduled for release in October 2017

Output: UHD: 2 outputs (TICO)
HD: 2 outputs

3G TICO & 12G to Quad 3G SDI Converter AK-UGB01G **NEW**

Scheduled for release in October 2017



This unit converts the signal from 3G TICO UHD Output Board to 3G x 4. It also converts 12G SDI signal to 3G x 4.

Input: 1 input (12G or TICO)
Output: 1 output (3G x 4)
Quad Square / 2 Sample Interleave (Level A or B)

Rear Panel



Specifications

As of April, 2017

Power	DC12 V (DC11 V - 17 V)
Power Consumption	40 W (body only, when 3G SDI x 4 is output) 60 W (maximum power when all accessories are connected and each output terminal is outputting at maximum)
Ambient Operating Temperature	-10 °C to 45 °C (14 °F to 113 °F) (Preheating required under a temperature 0 °C (32 °F) or below)
Storage Temperature	-20 °C to 60 °C (-4 °F to 140 °F)
Ambient Operating Humidity	85% or less (relative humidity)
Weight	Approx. 1.6 kg (3.53 lbs.) (body only)
Dimensions (W x H x D)	Body only 110 mm x 140 mm x 160 mm (4-11/32 inches x 5-17/32 inches x 6-5/16 inches) (excluding protrusions)
Pickup Device	11 million pixels, MOS x 1
Lens Mount	2/3-type bayonet
ND filter	CLEAR, 1/4, 1/16, 1/64
Gain	-6, -3, 0, 3, 6, 9, 12, 15, 18, 21, 24, 27, 30, 33, 36 dB
Total Gain	Selectable from 6, 12, 18, 24 dB
Shutter Speed	<ul style="list-style-type: none"> • [59.94i]/[59.94p] mode: 1/100, 1/120, 1/125, 1/250, 1/500, 1/1000, 1/1500, 1/2000 seconds • [29.97p] mode: 1/48, 1/50, 1/60, 1/96, 1/100, 1/120, 1/125, 1/250, 1/500, 1/1000, 1/1500, 1/2000 seconds • [23.98p] mode: 1/48, 1/50, 1/60, 1/96, 1/100, 1/120, 1/125, 1/250, 1/500, 1/1000, 1/1500, 1/2000 seconds • [50i]/[50p] mode: 1/60, 1/100, 1/125, 1/250, 1/500, 1/1000, 1/1500, 1/2000 seconds • [25p] mode: 1/48, 1/50, 1/60, 1/96, 1/100, 1/125, 1/250, 1/500, 1/1000, 1/1500, 1/2000 seconds • 180.0 deg, 172.8 deg, 144.0 deg, 120.0 deg, 90.0 deg, 45.0 deg

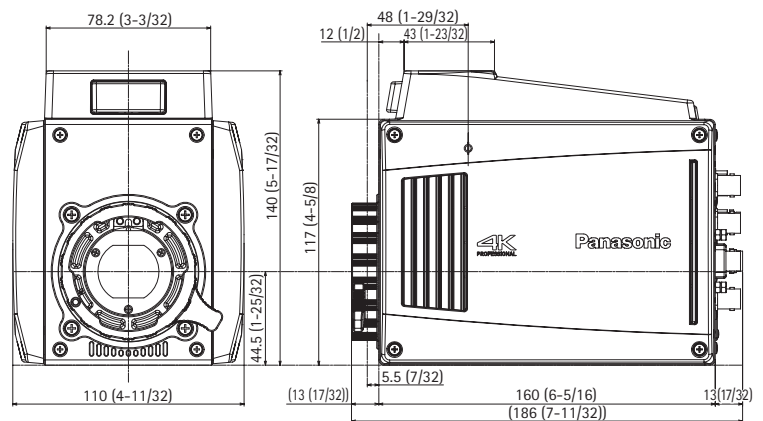
Synchro Scan Shutter	<ul style="list-style-type: none"> • [59.94i]/[59.94p] mode: 1/61.7 to 1/6130 seconds • [29.97p] mode: 1/30.9 to 1/2600 seconds • [23.98p] mode: 1/24.7 to 1/2880 seconds • [50i]/[50p] mode: 1/51.5 to 1/6250 seconds • [25p] mode: 1/25.7 to 1/3130 seconds
Shutter Open Angle	3 deg to 359.5 deg (can be set in 0.5 deg steps)
Sensitivity	[NORMAL]: F6 (2000 lx, 3200 K, 89.9% reflection, 1080/59.94i)/ F7 (2000 lx, 3200 K, 89.9% reflection, 1080/50i) [HIGH SENS]: F10 (2000 lx, 3200 K, 89.9% reflection, 1080/59.94i)/ F11 (2000 lx, 3200 K, 89.9% reflection, 1080/50i)
Minimum Subject Brightness	Approx. 0.01 lx (50%, F1.4, +36 dB (gain), +24 dB (total gain), 29.97p/59.94 Hz, 25p/50 Hz)
Image S/N	60 dB (standard) ([DNR] = [ON])
Horizontal Resolution	HD: 1000 TV lines or above (center) UHD: 1800 TV lines or above (center)
[HD SDI OUT 1] Terminal	BNC x 1 3G/1.5G HD SDI: 0.8 V [p-p], 75 Ω
[HD SDI OUT 2] Terminal	BNC x 1 1.5G HD SDI: 0.8 V [p-p], 75 Ω
[UHD/HD SDI OUT 1] Terminal	BNC x 1 3G/1.5G HD SDI: 0.8 V [p-p], 75 Ω
[UHD/HD SDI OUT 2] Terminal	BNC x 1 3G/1.5G HD SDI: 0.8 V [p-p], 75 Ω
[UHD/HD SDI OUT 3] Terminal	BNC x 1 3G/1.5G HD SDI: 0.8 V [p-p], 75 Ω
[UHD/HD SDI OUT 4] Terminal	BNC x 1 3G/1.5G HD SDI: 0.8 V [p-p], 75 Ω
[G/L IN] Terminal	BNC x 1, 1.0 V [p-p], 75 Ω
[I/F] Terminal	D-SUB x 1, 15-pin
[TALLY OUT] Terminal	4-pin x 1
[IRIS] Terminal	12-pin x 1
[ZOOM/FOCUS] Terminal	12-pin x 1
[LAN] Terminal	100BASE-TX/10BASE-T
[DC IN] Terminal	XLR x 1, 4-pin, DC12 V (DC11 V - 17 V)

Rear Panel



Dimensions

Unit: mm (inches)



Please refer to the latest Non-linear Compatibility Information, P2 Support, Download and Service Information, etc. at the following Panasonic web site.



<http://pro-av.panasonic.net/>

*Specifications are subject to change without notice.

Panasonic®

Panasonic Corporation
Connected Solutions Company

2-15 Matsuba-cho, Kadoma, Osaka 571-8503 Japan
<http://pro-av.panasonic.net/>

[Countries and Regions]

Argentina	+54 11 4122 7200
Australia	+61 (0) 2 9491 7400
Brazil	+55 11 3889 4035
Canada	+1 905 624 5010
China	+86 10 6515 8828
Hong Kong	+852 2313 0888
Czech Republic	+421 (0) 903 447 757
Denmark	+45 43 20 08 57
Egypt	+20 2 23938151
Finland, Latvia, Lithuania, Estonia	+358 (9) 521 52 53
France	+33 (0) 1 47 91 64 00
Germany, Austria, Switzerland	+49 (0) 6103 313887
Greece	+30 210 96 92 300
Hungary	+36 (1) 382 60 60
India	+91 1860 425 1860
Indonesia	+65 6277 7284
Iran (Vida)	+98 21 2271463
(Panasonic Office)	+98 2188791102
Italy	+39 02 6788 367
Jordan	+962 6 5859801
Kazakhstan	+7 727 298 0891
Korea	+82 2 2106 6641

Kuwait	+96 522431385
Lebanon	+96 11665557
Malaysia	+60 3 7809 7888
Mexico	+52 55 5488 1000
Mongolia	+976 70115577
Netherlands, Belgium	+31 73 640 2729
New Zealand	+64 9 272 0100
Norway	+47 67 91 78 00
Pakistan	+92 21 111 567 111
Palestine	+972 2 2988750
Panama	+507 229 2955
Philippines	+65 6277 7284
Poland	+48 (22) 338 1100
Portugal	+351 21 425 77 04
Romania, Albania, Bulgaria, Macedonia	+40 (0) 729 164 387
Russia & CIS	+7 495 9804206
Saudi Arabia	+966 (1) 4790499
Singapore	+65 6277 7284
Slovak Republic, Croatia, Serbia, Bosnia, Montenegro, Slovenia	+421 (0) 903 447 757
South Africa	+27 11 3131622
Spain	+34 (93) 425 93 00

Sweden	+46 (8) 680 26 41
Taiwan	+886 2 2227 6214
Thailand	+662 731 8888
Turkey	+90 216 578 3700
U.A.E. (for All Middle East)	+971 4 8862142
Ukraine	+380 44 4903437
U.K.	+44(0)1344 70 69 13
U.S.A.	+1 877 803 8492
Vietnam	+65 6277 7284



Factories of AVC Networks Company have received ISO14001:2004-the Environmental Management System certification. (Except for 3rd party's peripherals.)