



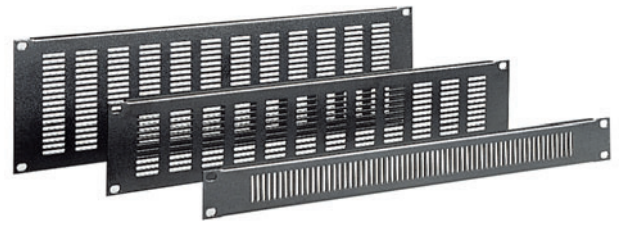
### Description

These 19" blank panels made of 1.3 mm steel serve to fill empty spaces in 19" rack cabinets. The blank panels are flanged on top and bottom to increase strength. They may also be used for custom fabrication.

Please consider the following features:

- The 19" blank panels are finished in black powdered coat.
- The panels are available in 3 different heights.

<b>19" Blank Panel</b> , 1 RU (weight: 0.34 kg) .....	<b>RLP-001</b>
<b>19" Blank Panel</b> , 2 RU (weight: 0.59 kg) .....	<b>RLP-002</b>
<b>19" Blank Panel</b> , 3 RU (weight: 0.85 kg) .....	<b>RLP-003</b>



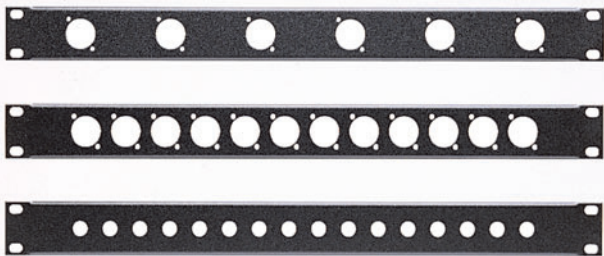
### Description

These 19" vent panels made of 1.3 mm steel serve to fill empty spaces in 19" rack cabinets. They have 3 x 25 mm vent slots to provide optimum ventilation of the 19" rack cabinet.

Please consider the following features:

- The 19" vent panels are finished in black powdered coat.
- The panels are available in 3 different heights.

<b>19" Vent Panel</b> , 1 RU (weight: 0.28 kg) .....	<b>RLF-001</b>
<b>19" Vent Panel</b> , 2 RU (weight: 0.47 kg) .....	<b>RLF-002</b>
<b>19" Vent Panel</b> , 3 RU (weight: 0.66 kg) .....	<b>RLF-003</b>



### Description

The 19" rack panels made of 1.3 mm steel serve to accommodate XLR sockets (universal "D" type) and jack sockets.

Please consider the following features:

- The XLR rack panels can accommodate 6 or 12 XLR sockets.
- The rack panel for jacks can accommodate up to 16 jack sockets.

<b>19" XLR Rack Panel</b> , 1 RU, 6 XLR (weight: 0.30 kg) .....	<b>RXP-061</b>
<b>19" XLR Rack Panel</b> , 1 RU, 12 XLR (weight: 0.26 kg) .....	<b>RXP-121</b>
<b>19" Jack Rack Panel</b> , 1 RU, 16 jacks (weight: 0.30 kg) .....	<b>RKP-161</b>



### Description

The 1 RU rack lighting serves as an additional light source for 19" racks. This can be useful especially for mobile systems.

Please consider the following features:

- The 19" lighting panel is equipped with a single lamp (12 V), an on/off switch and a dimmer.
- The gooseneck lamp with Neutrik XLR connector can be easily replaced.

<b>19" Lighting Panel</b> , 1 RU (weight: 0.80 kg) .....	<b>REL-001</b>
--	----------------



**Description**

This 19" sliding shelf is suitable for depositing or mounting devices and accessories. The base plate slides on rails allows full extension. Additionally, holes are provided in the base plate for fastening components.

Please consider the following features:

- The 19" sliding shelf is finished in black powdered coat. It is approx. 240 mm extendable and has a mounting depth of approx. 370 mm.
- The sliding shelves are made of 1.2 mm steel and are extremely stable.

**19" Sliding Shelf**, 3 RU (weight: 4.60 kg) ..... **RAU-003**



**Description**

This 19" writing shelf slides on rails, allows full extension. It can be used as a writing surface or to deposit items such as data sheets.

Please consider the following features:

- The 19" writing shelf made of 1.2 mm steel is finished in black powdered coat. It is approx. 300 mm extendable and has a mounting depth of approx. 370 mm.
- Additionally, the writing shelf has a handy tray for ball-point pens and the like.

**19" Writing Shelf**, 1 RU (weight: 3.44 kg) ..... **RSP-001**



**Description**

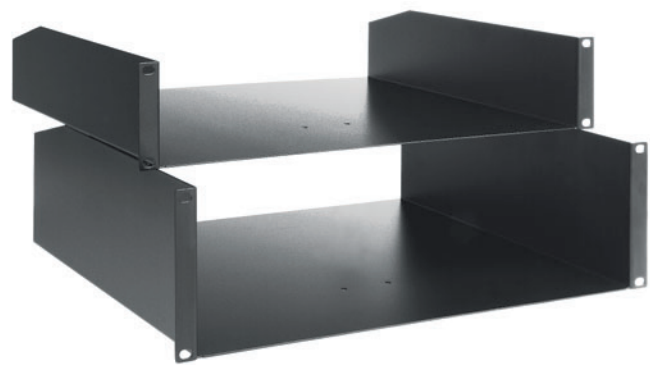
These 19" clamping shelves serve to install components that require captivation. The clamps are adjustable in height and depth to provide a secure fit.

Please consider the following features:

- The mounting depth of these 19" clamping shelves is 250 mm.
- They are finished in black powdered coat.

**19" Clamping Shelf**, 2 RU (weight: 2.20 kg) ..... **REF-002**

**19" Clamping Shelf**, 3 RU (weight: 2.50 kg) ..... **REF-003**



**Description**

The 19" universal shelves are extra deep and can be used for accommodating accessories, non-rackmount components and the like. Holes are provided in the shelf itself which can be used for fastening components.

Please consider the following features:

- The mounting depth of these universal shelves is 370 mm. They are made of 1.6 mm steel.
- They are finished in black powdered coat.

**19" Universal Shelf**, 2 RU (weight: 2.77 kg) ..... **RAF-002**

**19" Universal Shelf**, 3 RU (weight: 3.36 kg) ..... **RAF-003**



### Description

19" storage box which serves to accommodate components and accessories. It has a hinged cover that swings down. All storage boxes with hinged cover have flush pulls.

Please consider the following features:

- The 19" storage boxes are finished in black powdered coat.
- They are made of 1.2 mm steel and have a mounting depth of 250 mm.

<b>19" Storage Box</b> , 2 RU (weight: 3.90 kg) .....	<b>RKB-002</b>
<b>19" Storage Box</b> , 3 RU (weight: 4.95 kg) .....	<b>RKB-003</b>



### Description

19" drawers which serve to accommodate components and accessories. The drawer slides are on rails and enable full extension.

All drawers are equipped with a flush pull and a lock with 2 keys.

Please consider the following features:

- The mounting depth of the drawers is 360 mm.
- The drawers are made of 1.2 mm steel and are extremely stable.

<b>19" Drawer</b> , 2 RU (weight: 6.20 kg) .....	<b>RSL-002</b>
<b>19" Drawer</b> , 3 RU (weight: 7.30 kg) .....	<b>RSL-003</b>



### Description

Empty 19" housing which can be used for custom fabrication.

Please consider the following features:

- The housings are finished in black powdered coat and have a 3 mm aluminium front panel.
- The mounting depth of these empty housings is 240 mm.

<b>19" Empty Housing</b> , 1 RU, (weight: 2.54 kg) .....	<b>RLG-001</b>
<b>19" Empty Housing</b> , 2 RU, (weight: 3.23 kg) .....	<b>RLG-002</b>
<b>19" Empty Housing</b> , 3 RU, (weight: 3.83 kg) .....	<b>RLG-003</b>



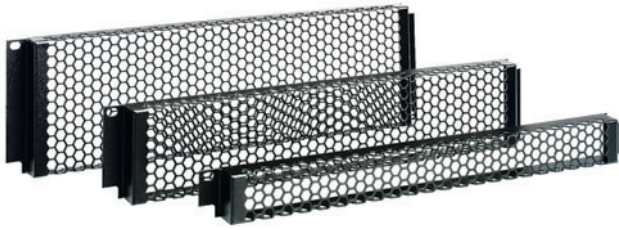
### Description

Empty 19" housings with vent slots which can be used for custom fabrication.

Please consider the following features:

- The housings are finished in black powdered coat and have a 3 mm aluminium front panel.
- The mounting depth of these empty housings is 300 mm

<b>19" Empty Housing</b> , 1 RU, (weight: 3,24 kg) .....	<b>RLL-001</b>
<b>19" Empty Housing</b> , 2 RU, (weight: 3,98 kg) .....	<b>RLL-002</b>
<b>19" Empty Housing</b> , 3 RU, (weight: 4,84 kg) .....	<b>RLL-003</b>



### Description

These 19" protective grids are made of 1.5 mm and serve to protect your devices against impact.

Please consider the following features:

- The 19" protective grids are finished in black powdered coat.
- They are fixed diagonally by means of the 19" rackmount screws.

- 19" Protective Grid, 1 RU (weight: 0.43 kg) . . . . . RSG-001**
- 19" Protective Grid, 3 RU (weight: 0.46 kg) . . . . . RSG-002**
- 19" Protective Grid, 3 RU (weight: 0.54 kg) . . . . . RSG-003**



The set includes 25 M5 or M6 oval head screws and the matching plastic cup washers.

- Additional Screw Set M5, M5 x 16 . . . . . RKS-005**
- Additional Screw Set M6, M6 x 16 . . . . . RKS-006**



The set includes 25 M5 or M6 cage nuts for mounting the rackmount devices on the front rackrails.

- Cage Nut Set M5 . . . . . RKM-005**
- Cage Nut Set M6 . . . . . RKM-006**



### Description

Stage boxes for the connection of multicore cables, for example, to distribute the cables coming from the mixer on the stage.

All stage boxes are suitable for the installation of universal XLR sockets. The XLR holes are identified by numbers. The rugged boxes are made of sheet steel and are finished in black powdered coat.

The difference between the XSH series stage boxes and the XSB series stage boxes (on the right) is, that with the **XSH** boxes a complete **Harting** connection flange can be installed for cable entry.

- XLR-Stage-Box, 16 XLR sockets/Harting (weight: 1.22 kg) . . . . . XSH-016**
- XLR-Stage-Box, 24 XLR sockets/Harting (weight: 1.27 kg) . . . . . XSH-024**



### Description

Stage boxes for the connection of multicore cables, for example, to distribute the cables coming from the mixer on the stage.

All stage boxes are suitable for the installation of universal XLR sockets. The XLR holes are identified by numbers. The rugged boxes are made of sheet steel and are finished in black powdered coat.

- XLR-Stage-Box, 8 XLR sockets (weight: 0.95 kg) . . . . . XSB-008**
- XLR-Stage-Box, 16 XLR sockets (weight: 1.30 kg) . . . . . XSB-016**
- XLR-Stage-Box, 24 XLR sockets (weight: 1.65 kg) . . . . . XSB-024**