



# NEX-EA50EH



# Expanding the Sony large sensor camcorder line-up

F65



Professional  
Cinematographers

PMW-F3

NEX-FS700E



NXCAM



NXCAM

Professional  
Videographers

NEX-FS100E

NEX-EA50EH



HANDYCAM



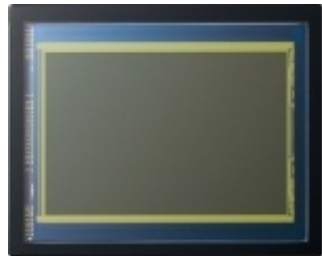
NXCAM

•Entry Level Pro  
•Prosumers

NEX-VG20(VG10)

# Here is The NEX-EA50EH

APS-C



**Exmor™**  
APS HD CMOS

Totally New  
Body Design



E-mount



Motorised Zoom &  
Professional Functions



## Here is The NEX-EA50EH



Sony at IBC 2012

**SONY**  
make.believe

# Target user & applications



Event Videographer



DSLR shooters



Film School Education



Affordable Filming



B or C camera to FS100/700



Wedding



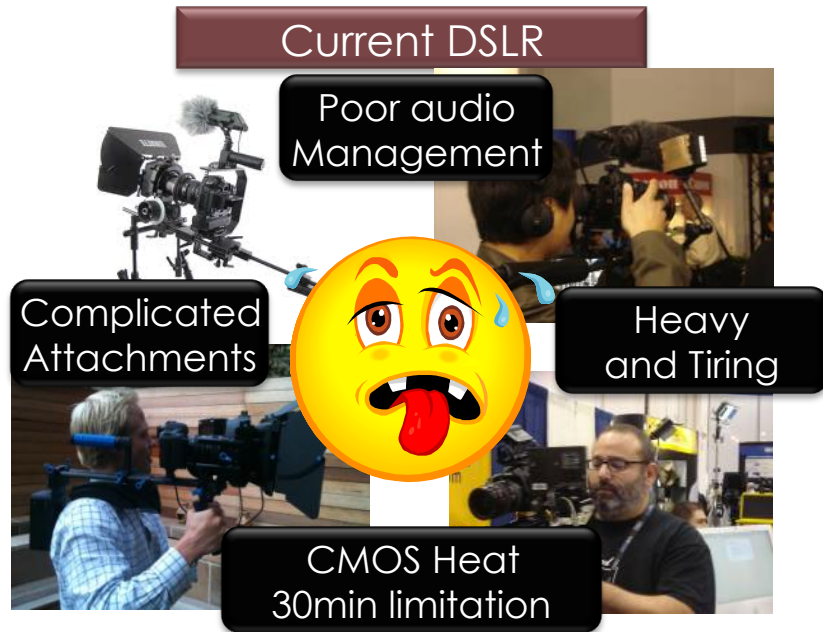
Live Music



Event

# Bye Bye, DSLR

**Current DSLR**



- Poor audio Management
- Complicated Attachments
- Heavy and Tiring
- CMOS Heat 30min limitation

**The NEX-EA50EH**



- Use of any DSLR lenses
- Professional Audio
- Professional Appearance
- Simple All In One
- No 30min limitation
- Shoulder Support

# NEX-EA50EH: main features

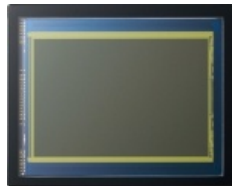
## E-mount System



## Large Format Sensor

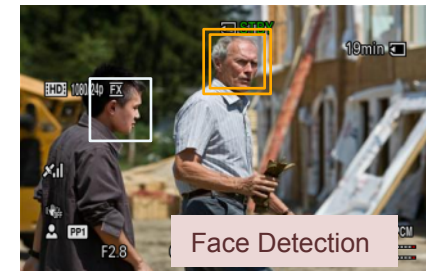
Exmor APS-C HD CMOS Sensor

**Exmor™**  
APS HD CMOS



## Picture/Camera Function

- Progressive Recording:
  - 60p/30p/24p, 50p/25p
- Picture Profile
- **Zoom Rocker**
- Focus Assist
  - One-push auto
  - **Face detection**
  - **Spot focus**
  - **Focus transition**
  - **Expand focus**
- Iris Assist
  - **One-push auto**
- Last Scene Review
- **Still Picture**
  - **16M pix JPEG**



# Expanding the Sony large sensor camcorder line-up

F65



Super35

Professional  
Cinematographers

PMW-F3

NEX-FS700E



NXCAM



NXCAM

Super35

Professional  
Videographers

NEX-FS100E

NEX-EA50EH



HANDYCAM



NXCAM

APS-C

•Entry Level Pro  
•Prosumers

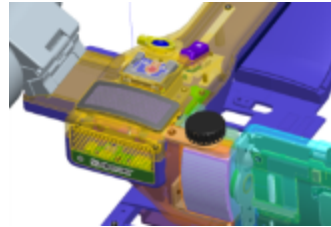
NEX-VG20(VG10)





# NEX-EA50EH: main features

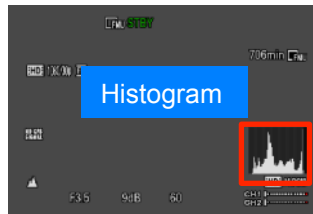
## Audio

- Linear PCM
- Built-in Microphone (Stereo)
- XLR input (2 channel)
- Headphone out
- Speaker



## Others

- GPS  GPS
- TC/UB
- HDMI TC
- Zebra
- Peaking
- Marker
  - (OFF, 4:3, 13:9, 14:9, 15:9, 1.66:1, 1.85:1, 2.35:1)
- Histogram 
- ISO Sensitivity, Focus feet, Shutter angle Display



## IF

- HDMI out
- Component out (RCAx3)
- Composite out (RCA)
- Audio out (RCA L/R)
- Headphone
- XLR input x2
- USB
- Remote (IR, LANC)
- MS/SD slot
- “Mirroring MS”
- FMU slot (simultaneous REC)
- New Hot shoe(MI shoe) for Flash



## Powered zoom

Supplied Motorised Power 18-200mm Zoom Lens



Realizes Smooth & Slow Zoom operation  
Can be controlled using the zoom rocker lever on the camera grip  
(and by using the lever on the lens itself)

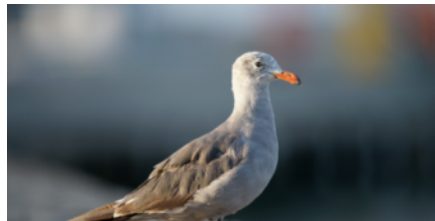
The best for the wedding, event and documentaries

# NEX-EA50EH: Zoom Rocker



## Smart Digital Zoom

with small quality degrading



2x zoom\*



### Super Smooth Zoom Effect with Fixed Focal Length Lens

The image shows three Sony fixed focal length lenses arranged horizontally. From left to right: a 1.8/24mm lens, a 1.8/35mm lens, and a 1.8/50mm lens. The text above them reads 'Super Smooth Zoom Effect with Fixed Focal Length Lens'.

# NEX-EA50EH: Shooting style

Shoulder Mount Style

Handheld Style



- Stable
- Long Time Shooting
- Professional Appearance



- Free Angle
- Mobility
- Narrow Space Shooting

Versatile shooting style for live event recording

# NEX-EA50EH: lens hood & screw holes

Change the design of lens hood



Looks more conventional camcorder style

Adding 1/4 x2 screw holes  
(same parts as tripod hole)



For user customization  
(put a counter balance,  
external recorder, etc.)

# NEX-EA50EH: E-mount Flexibility

**Hundreds of E-mount adapters, allowed by E-mount short flange back**

Several E-to-other lens system adapters from Sony and third-party manufacturers  
 More than 180 adapters for 35 mount types

**Canon EOS**






and Alpha, Arriflex, C Mount, Contax G, Leica M & R, Nikon F

and Nikon G, PL, Canon FD, B4 2/3"



**N**  
NOVOFLEX



Canon FD, Contax/Yashica, Leica M & R, M42, Minolta AF/Sony & MD, Nikon, Olympus OM, Pentax K, T2




VM, Nikon F, Pentax K, Contax/ Old Nikon (SC)




Denz PL54 (support)

*and more*

**KIPON**

FotioX™  
F O T I O X

**RAYQUAL**

**CINEVATE**

**Zunow**  
Conversion Lenses

Fotasy

**FOTGA**

**Bokkeh.com**

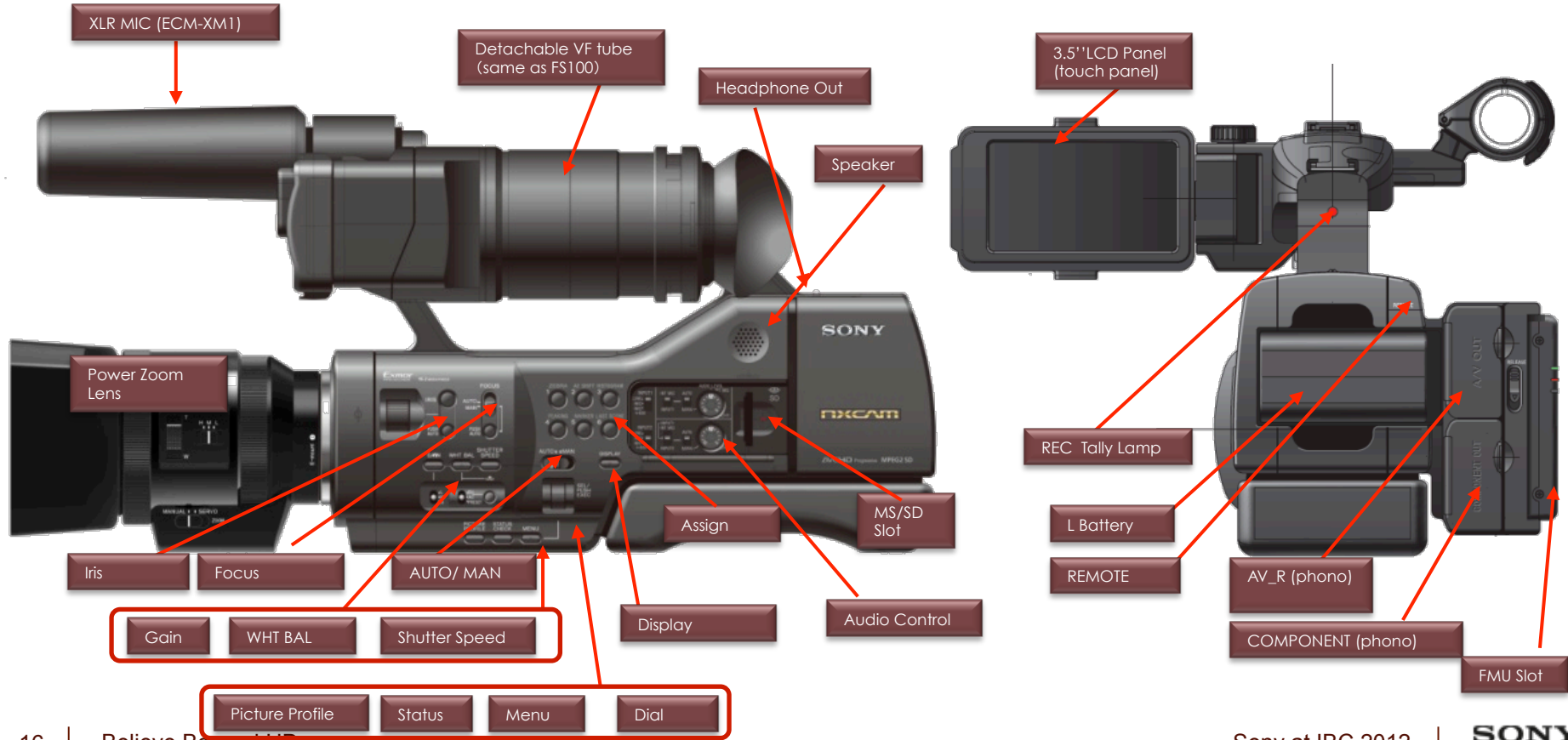
**BORG**  
oasis studio

Sony at IBC 2012 | **SONY**  
make.believe

## NEX-EA50EH: Design

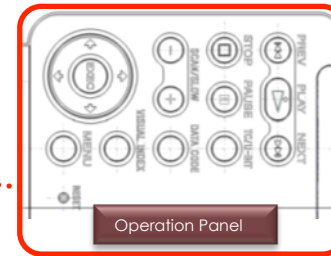
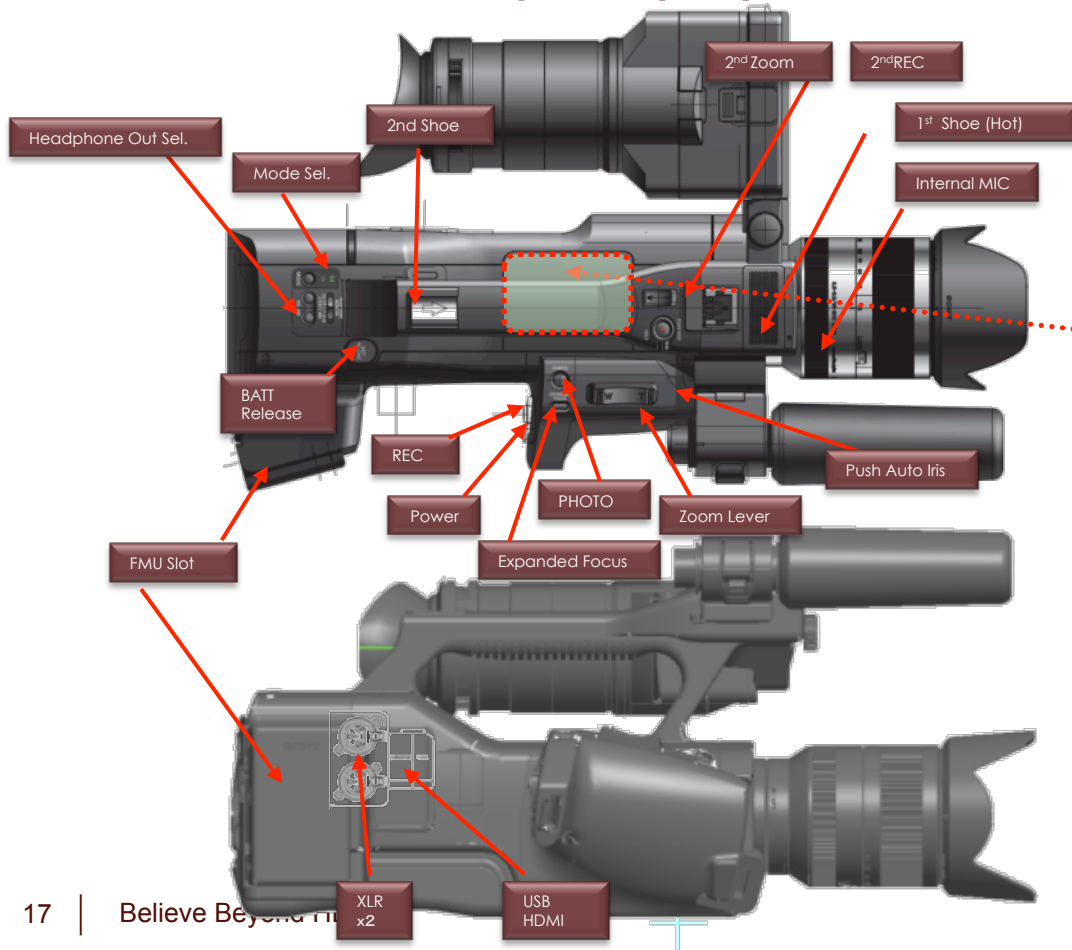


# NEX-EA50EH: layout (1/2)





# NEX-EA50EH: layout (2/2)



# NEX camcorders comparison

NEX-VG20EH



NEX-EA50EH



NEX-FS100EK



Handheld
APS-C CMOS
50p
16M Still Picture
Manual Zoom Lens
2ch/ 5.1ch surround
3.5mm Stereo mini in
V series battery

Handheld/Shoulder
APS-C CMOS
50p/60p
16M Still Picture
Power Zoom Lens
Handy/Shoulder Switchcable
LPCM
2 XLR inputs
L battery
LCD EVF with Large Hood
TC/UB
FMU slot

Module/Handheld
Super35mm CMOS
50p/60p
Slow & Quick (1-60fps)
Manual Zoom Lens
Module structure for system up
LPCM
2 XLR inputs
L battery
LCD EVF with Large Hood
TC/UB
FMU slot

		NEX-VG20EH	NEX-EA50EH camcorder	NEX-FS100
Image Sensor	Name	Exmor™ APS-C CMOS Sensor	Exmor™ APS-C CMOS Sensor	Exmor™ Super35 CMOS Sensor
	Pixel numbers	16M	16M	3.53M
	Frame Rate	50fps	60/50fps	60/50fps
	Sensitivity	Good	Good	Very Good
	Shallow Depth of field	Good	Good	Good
	Color Aliasing	Little	Little	Less
	jaggedness	Little	Little	Less
	Rolling shutter(Video)	Little	Little	Less
	Still Picture	Yes	Yes	No
Lens Mount (Flange Back)	E-mount (18mm)	E-mount (18mm)	E-mount (18mm)	
Kit Lens	18-200mm Manual Zoom	18-200mm Power Zoom	18-200 Manual Zoom	
Built-in ND Filter	No	No	No	
Recording Format	AVCHD / MPEG2-SD	AVCHD / MPEG2-SD	AVCHD / MPEG2-SD	
Frame Rate	<ul style="list-style-type: none"> <li>■ 1080/50p, 25p, 50i</li> <li>■ PAL</li> </ul>	<ul style="list-style-type: none"> <li>■ 1080/59.94p, 50p, 59.94i, 50i, 29.97p, 25p, 23.98p</li> <li>■ 720/59.94p, 50p</li> <li>■ 480(576)/59.94i, 50i</li> </ul>	<ul style="list-style-type: none"> <li>■ 1080/59.94p, 50p, 59.94i, 50i, 29.97p, 25p, 23.98p</li> <li>■ 720/59.94p, 50p</li> <li>■ 480(576)/59.94i, 50i</li> </ul>	
Audio Format	AC3	LPCM/AC3	LPCM/AC3	
Mechanical Shutter(Still)	Yes	Yes	No	

	NEX-VG20H	NEX-EA50EH camcorder	NEX-FS100
Continuous Rec. time	780 min	780 min	780 min
Recording Media	Memory Stick/ SD/SDHC/ SDXC/	Memory Stick/ SD/SDHC/ SDXC/ <b>HXR-FMU128</b>	Memory Stick/ SD/SDHC/ SDXC/ HXR-FMU128
Simultaneous Rec.	No	<b>Yes</b> (Memory Card + FMU) (HD/HD)	Yes (Memory Card + FMU) (HD/HD)
Slow & Quick Rec.	No	No	<ul style="list-style-type: none"> <li>• 1920x1080/24, 30, 60p -1, 2, 4, 8, 15, 30, 60fps</li> <li>(1920x1080/25, 50p -1, 2, 3, 6, 12, 25, 50fps)</li> </ul>
Smooth Slow Rec.	No	No	<b>Yes</b>
Peaking	Yes	Yes	Yes
Picture Profile	No	Yes	Yes
Histogram	Yes	Yes	Yes
Zebra	Yes	Yes	Yes
Color Bar	No	Yes	Yes
Marker	Guide Frame	Guide Frame, 4:3, 13:9, 14:9, 15:9, 1.66:1, 1.85:1, 2.35:1	Guide Frame, 4:3, 13:9, 14:9, 15:9, 1.66:1, 1.85:1, 2.35:1
TC Configuration	No	Yes	Yes
Rec. Review	No	Yes	Yes
Assign Button	No	6	6
LCD Panel	3.0-inch, 16:9 XtraFine 921K (1920x480)	3.5-inch, 16:9 XtraFine 921K (1920x480)	3.5-inch, 16:9 XtraFine 921K (1920x480)

		NEX-VG20H	NEX-EA50EH camcorder	NEX-FS100
Input / Output	SDI Out	No	No	No
	HDMI Out	Yes (Type C x1)	Yes (Type A x1)	Yes (Type A x1)
	Component Out	No	Yes (RCA x3)	Yes (Mini D x1)
	Video Out	Yes (AV/R x1)	Yes (RCA x1)	Yes (RCA x1)
	USB	Yes (mini A/B)	Yes (mini A/B)	Yes (mini A/B)
	Audio Input	Yes (Stereo mini)	Yes (XLR x2) Line/Mic, 48V	Yes (XLR x2) Line/Mic, 48V
	Internal Mic.	Yes 5.1ch	Yes Stereo	No
	Audio Output	Yes (AV/R)	Yes (RCA x2)	Yes (RCA x2)
	Headphone	Yes (stereo mini x1)	Yes (stereo mini x1)	Yes (stereo mini x1)
	Speaker	Yes	Yes	Yes
	Camera Remote	Yes (AV/R x1)	Yes (LANC x1)	Yes (LANC x1)
GPS Function		No	Yes	Yes
HDMI TC out		No	Yes	Yes

# NEX-EA50EH: accessories

**2NP-F970/B**  
Batteries



**HVL-LBPB**  
LED torch



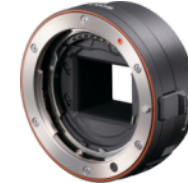
**HXR-FMU128**  
128 GB flash memory unit



**UWP-Series**  
Wireless Mic



**LA-EA1**  
Alpha to E-mount adapter



**VCT-SP1BP**  
Extendable monopod



**RM-1BP**  
Lanc remote commander



**VCT-PG11RMB**  
Tripod with RM-1BP



**LA-EA2**  
Alpha to E-mount adapter



**LCS-G1BP**  
Soft carrying case



**LCS-BP1BP**  
Soft backpack



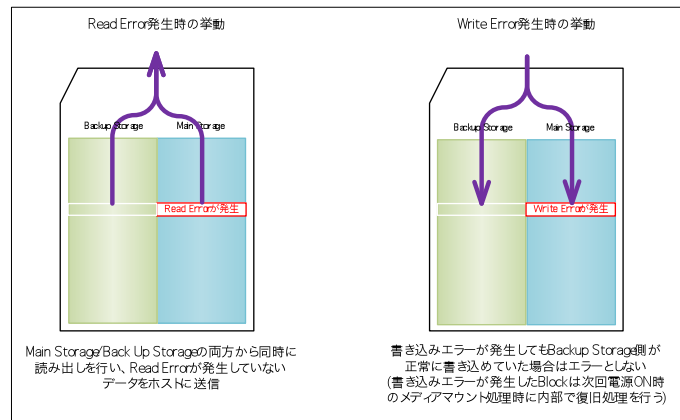
Ultra Quick  
continuous AF on  
any Alpha lens !!

Consumer models

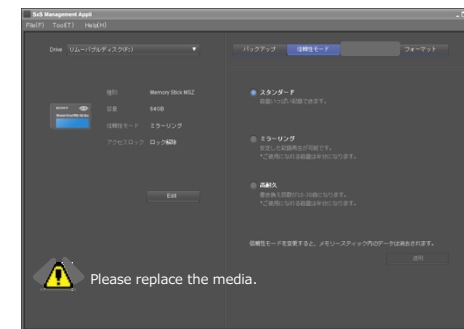
# New MemoryStick™ PRO Duo MS-PX64/32/16



## Mirroring Technology (like RAID)



The card can be locked by App.



Card is available from Sept.