



**Encoder / Decoder**



**DVB IPTV Gateway**



**FR Chassis**



**MultiCoder Appliances**



**DCH Series DVB Headend**

**iCue Server**



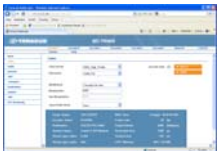
**iCue Player**



**StreamView**



**MultiCoder**

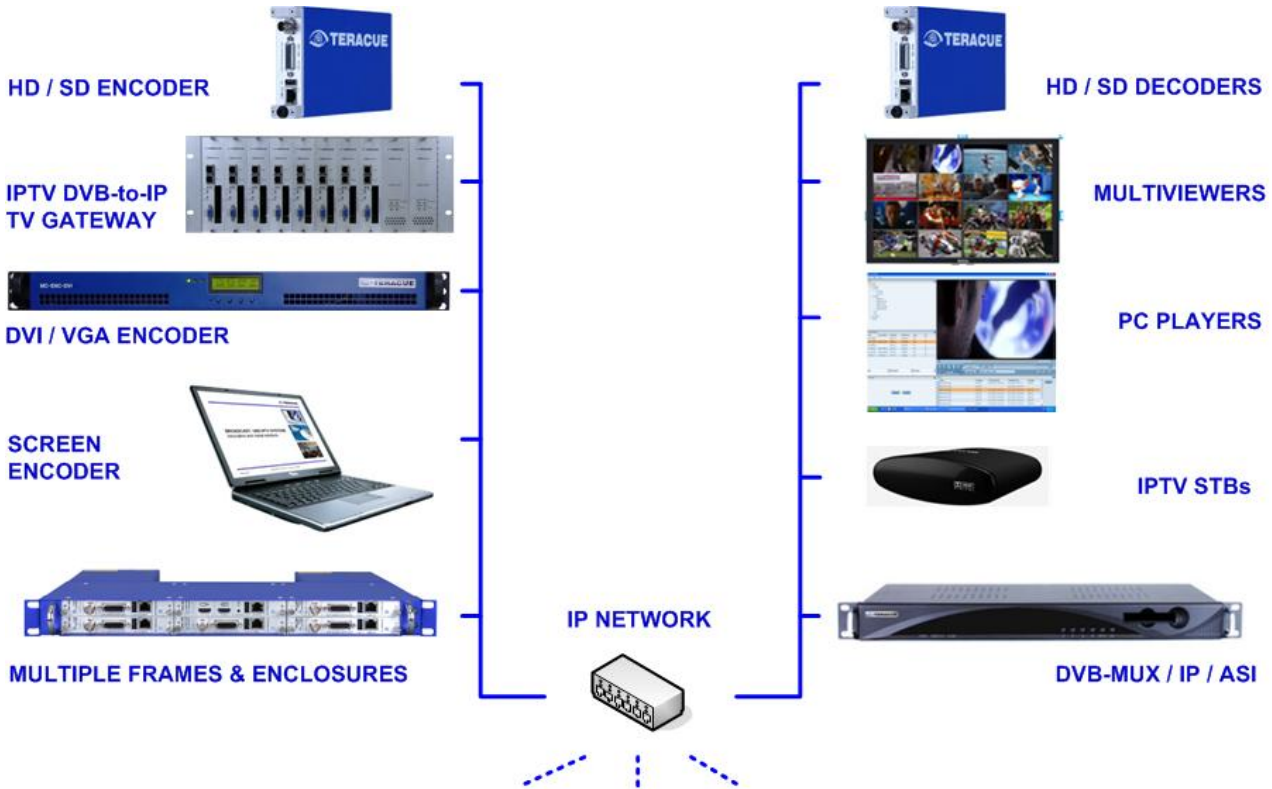


**ElementManager**



# IPTV Product Overview

## Encoding / Decoding / Transcoding DVB/IPTV Gateway / IRD / DVB-Mux Stream Recording / Playout / Management



**STREAM RECORDING  
ARCHIVING &  
PLAYOUT**



**DEVICE MANAGEMENT  
REMOTE CONTROL &  
MONITORING**



**TRANSCODING &  
TRANSRATING**  
  
**STREAM-ROUTING  
TIME-SHIFT / DELAY  
ENCRYPTION**



**INTERNET & FLASH  
STREAMING**

## ENC-Series

Designed for live streaming applications where single TV channels, camera signals or monitoring feeds are to be distributed over a network. The boards have a robust design without any moving parts, being disk-, fan- and noiseless.



### ENC-200-AUDIO Board

AAC and MPEG-1/2 audio encoder board with SDI embedded audio, AES and analog audio input.



### ENC-200-AUDIO-PORTABLE

AAC and MPEG-1/2 portable audio encoder with SDI embedded audio, AES and analog audio input.



### ENC-200 Board

H.264 SD encoder/transmitter board with SDI and embedded audio, PAL/NTSC, Composite, S-Video, Component, AES and analog audio input.



### ENC-200-PORTABLE

H.264 SD portable encoder/transmitter with SDI and embedded audio, PAL/NTSC, Composite, S-Video, Component, AES and analog audio input.



### ENC-300-SD Board

H.264 SD encoder board with HD/SDI (HD to SD down conversion), PAL/NTSC, Composite, S-Video, Component or analog VGA (RGB) input.



### ENC-300-SD-PORTABLE

H.264 SD portable encoder with HD/SDI (HD to SD down conversion), PAL/NTSC, Composite, S-Video, Component or analog VGA (RGB) input.



### ENC-300-HSDI Board

H.264 HD/SD encoder board with HD/SD-SDI, SDI with embedded and analog audio, PAL/NTSC, Composite, S-Video, Component or analog VGA (RGB) input.



### ENC-300-HSDI-PORTABLE

H.264 HD/SD portable encoder with HD/SD-SDI, SDI with embedded and analog audio, PAL/NTSC, Composite, S-Video, Component or analog VGA (RGB) input and power supply.



### ENC-300-DVI Board

H.264 HD/SD encoder board with DVI/HDMI input and embedded and analog audio.



### ENC-300-DVI-PORTABLE

H.264 HD/SD portable encoder with DVI/HDMI input, embedded and analog audio.

## DEC-Series

The real-time hardware decoders represents the direct counterpart to the ENC encoder series. They are designed as professional and robust 24/7 live stream receivers and video/audio processing units. Multi-format boards for MPEG-2 and MPEG-4 AVC H.264 decoding, offer simultaneous and flexible multi-signal video stream output.



### DEC-200

H.264 SD and MPEG-2 SD decoder board with SDI and embedded audio, PAL/NTSC, Composite, S-Video, RGBS, Component, Genlock, AES and analog audio output.



### DEC-200-PORTABLE

H.264 SD and MPEG-2 SD portable decoder with SDI and embedded audio, PAL/NTSC, Composite, S-Video, RGBS, Component, Genlock, AES and analog audio output.



### DEC-300-HSDI

H.264 HD and MPEG-2 SD decoder board with HD/SD-SDI-, embedded audio, analog video/audio output.



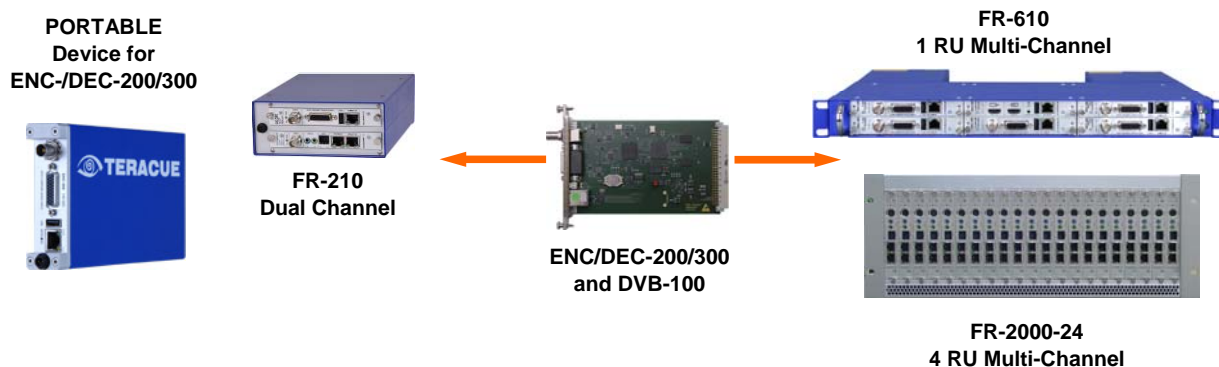
### DEC-300-HSDI PORTABLE

H.264 HD and MPEG-2 SD portable decoder with HD/SD-SDI, embedded audio, analog video/audio output.

# Encoding / Decoding / Transcoding

## FR-Series

All boards of the ENC, DEC and DVB series are fanless units. They are operated within the FR frame series. Hot plugging and swapping of boards is possible. Boards can be mixed-and-matched to exactly suit simultaneous requirements: for encoding, decoding and DVB-to-IP streaming.



## DCH-EC-Series

1RU MPEG-2 and H.264 Encoder series available with re-multiplexer or transcoder. The DCH-EC-Series can handle diverse input signals like SDI, Composite or YC.



### DCH-300EC

1 RU rack mount MPEG-2 encoder with re-mux and IP streaming output function. S-Video, SDI and Composite PAL/NTSC/Secam video input, balanced audio input, SDI input, embedded audio.



### DCH-510EC

1RU rack mount HDTV H.264 encoder/transcoder, multiplexer and streamer. IP and ASI input/output, HD/SD-SDI, HDMI and analog inputs. Two stereo pairs audio. HDMI and SDI embedded audio supported.

## MultiCoder

MC MultiCoder offers multi-format encoding, transcoding and routing of IPTV streams. MultiCoder is available as 1RU appliance or as software:



### MC-ENC-DVI-1RU

1RU appliance for H.264 SD/HD and MPEG-2 SD/HD encoding and streaming of DVI/VGA video signals and analog audio.



### MC-ENC-DVI2-1RU

1RU appliance for H.264 SD and MPEG-2 SD/HD encoding and streaming of DVI/VGA video signals and analog audio with 2 DVI inputs.



### MC-ENC-SDI-1RU

1RU appliance for MPEG-2 SD/HD encoding and streaming of SDI and HD/SD-SDI video signals.



### MC-ROUTE-1RU

1RU appliance for live stream routing and bridging. Conversion and routing of unicast and multicast streams. Multiple unicast and multicast outputs supported. Offers AES en-/decryption, stream delay/time-shift and RTSP Server.



### MC-TRANS-1RU

1 RU appliance for multiscreen and multiformat transcoding and transrating of live H.264 SD/HD and MPEG-2 SD/HD transport streams. Multicast/unicast and HTTP live streaming (HLS) is supported.

## MultiCoder Software:



### MC-TRANS

Software transcoding and transrating for live IPTV H.264, MPEG-2, SD/HD streams. Multicast/unicast and HTTP Live Streaming (HLS) is supported. Also offers Supports logo and text insertion. Up to 10 transcodings per server supported.

### MC-SCREEN

HD capturing, encoding and streaming of local desktop views and screen areas. For powerpoint, website and screen view streaming.

### MC-ROUTE

For converting, routing and bridging different streaming types into multicast- and unicast networks. Offers AES en-/decryption and stream delay/time-shift and RTSP server.

## XPlayer

Standalone stream player application for viewing live streams on PC's. It is designed for viewing and selecting from any available live streams on your network, without any rights- and permission management. In this case no streaming server is necessary.



### XPLAYER

PC live stream playback software

## iCue Player

The iCue Player provides quick video search and instant playback, for all streams and videos that are managed by the iCue Server: recording, archiving and broadcasting are controlled by iCue Player. Videos can be uploaded and exported. iCue Player TX (trim&export) additionally supports H.264/MPEG-2 transcoding during export.



### ICUE-PLAYER

iCue Player PC user license.  
All-in-one PC stream player for the iCue system.

### ICUE-PLAYER-TX

iCue Player - trim&export.  
Additional transcoding support.

## Amino

Amino set top boxes provide cost-effective decoding for video/audio streams on TV's, LCD's, plasma displays, monitors and even for projectors.



### Amino Aminet-140

Multi-format and multi-resolution STB for MPEG-2 SD/HD and H.264 SD/HD with RF, HDMI 1.3a, USB, Composite, S-Video or Component video and analog audio output.



### Amino Hospitality Version of Aminet-140

## StreamView

Advanced H.264 and MPEG-2 SD/HD software decoder. Can be extended to display max. 16 input streams for mosaic, multiviewer applications. Local or remote controlled.



### STREAMVIEW

For decoding and display of max. 16 input streams. Software only.

# Recording / Playout / Management

## iCue-Series

Any video - at any time - on any workplace: The end-to-end iCue streaming and recording system consists of iCue Server and iCue Player. iCue Server provides all streaming, recording and broadcasting services as well as content management and rights management. H.264 and MPEG-2 HD/SD transport streams are supported. iCue Server provides a comprehensive solution for video publishing and archiving.



### **ICUE-COMPACT (Appliance)**

Stream recording, viewing and trimming station. Allows simultaneous recording of max. 5 live streams. Supports MPEG-2 SD/HD and H.264 SD/HD transport streams as inputs. Allows storage of up to 500 hours of video recordings. Export to MPEG-2 and H.264 TS, PS and WinMedia WMV/ASF



### **ICUE-LIVE**

Entry-level: LIVE streaming server, user- and rights-management included.

### **ICUE-100**

Entry-level: LIVE and VOD streaming server, user-, rights-management and playlist scheduling included. Maximum throughput: 90 Mbit/s.

### **ICUE-1000**

Mid-level: LIVE and VOD streaming server, user-, rights-management and playlist scheduling included. Maximum throughput: 200 Mbit/s.

### **ICUE-2000**

High-level: LIVE and VOD streaming server, user-, rights-management and playlist scheduling included, loadbalancing and clustering supported. Maximum throughput: not limited.

### **ICUE-ARCHIVE-OPTION**

This option can be installed on iCue 1000/2000 server. Enables auto-export, retrieval and partial restore to and from a network drive.

## ElementManager

The ElementManager is Teracue's remote control application for: encoders, set top boxes, servers, and even displays. ElementManager enables the effective administration of individual LAN and intranet devices. It is one application that allows easy and central control, monitoring and management of most Teracue products.



### **EM**

ElementManager provides remote control, grouping, presets and basic alarm and scheduling.

## DMM-Series

The DMM DVB-to-IP gateway series is designed for streaming applications where terrestrial, satellite or cable TV and radio channels are to be made available as IPTV streams on the network. Each DMM board is able to process a complete DVB MPTS for streaming and one channel for monitoring. Two CI slots can be used for multi channel decryption (CAM+SmartCard required). Selected TV channels are streamed on the network in the original DVB-quality without loss of quality.



### DMM-140-S2 / -C / -T

DVB board for streaming, re-multiplexing and MPEG-2 decoding. DVB-S2, DVB-C or DVB-T and ASI input and ASI, SDI and analog outputs. 100 MB TS over IP 1 x in or 32 channel out.



### DMM-150-S2 / -C / -T / -T2

DVB board for streaming, re-multiplexing and H264/MPEG-2 decoding. DVB-S2, DVB-C, DVB-T or DVB-T2 and ASI input and ASI, SDI and analog outputs. 100 MB TS over IP 1 x in or 32 channel out.



### DMM-100-FR

19" 4RU rack mount chassis for 8 DMM boards with redundant power supplies.



### DMM-100-FR-1RU

19" 1RU rack mount chassis for 2 DMM boards.

## DVB-100-Series

The DVB-100 EtherTV DVB-to-IP gateway series is designed for compact streaming applications where terrestrial, satellite or cable TV and radio channels are to be made available as IPTV streams on the network. The DVB-100 boards can be operated next to ENC encoder and DEC decoder units inside the FR frame-series. Each DVB-100 board is able to process a complete DVB MPTS for streaming. Two optional CI slots can be used for multi channel decryption (CAM+SmartCard required). Selected TV channels are streamed on the network in the original DVB-quality without loss of quality.



### DVB-100-DX-C / -S / -S2 / -T

DVB/IP gateway board for native streaming of DVB-C, DVB-S, DVB-S2 or DVB-T inputs.



### DVB-100-DX-C-CI / -S-CI / -S2-CI / -T-CI

DVB/IP gateway board for native streaming of DVB-C, DVB-S, DVB-S2 or DVB-T inputs with CI module for decryption.

## DCH-Series DVB Headend

Advanced IPTV and HDTV digital headend systems: The DCH-series includes a variety of HD/SD input and output options, all-in-one product series: IRD receiver decoder, DVB/IP/ASI decoder-remultiplexer and professional DVB IPTV gateway.



### DCH-510P-S2-IP / -C-IP / -T-IP / -T2-IP

1RU rack mount HDTV processor for H.264 and MPEG-2 decoding and re-multiplexing and streaming. DVB-S2, DVB-C, DVB-T or DVB-T2 and ASI input and HD/SD-SDI, ASI, HDMI and analog outputs. 1 Gb/s TS over IP with FEC.



### DCH-400P-S2-IP / -C-IP / -T-IP

1RU rack mount DVB processor for MPEG-2 decoding and re-multiplexing and streaming. DVB-S2, DVB-C or DVB-T and ASI input and SDI, ASI and analog outputs. 100 MB TS over IP.



### DCH-410PM-CC / -TC / -S2C / -S2T / -CT / -TT

1RU rack mount DVB-C QAM or DVB-T COFDM modulator and remultiplexer with DVB-C, DVB-T, DVB-S2 input, ASI in- and output, TS over IP input or output.



### Finance: digital company TV

CSOB Bank - Prague  
 Dresdner Bank, Kleinwort Wasserstein - Frankfurt  
 E.ON AG - Düsseldorf  
 E-Plus Service GmbH & Co. KG - Potsdam  
 NXBP Bank - Paris  
 Raiffeisenbank - Kleinwalsertal  
 Süddeutsche Zeitung - Munich



### Video monitoring: control stations

Aerodata AG - Germany  
 DLR German Aerospace Centre - Oberpfaffenhofen  
 EADS Astrium - Bremen  
 GCC - Galileo Control Centre - Oberpfaffenhofen  
 Telespazio / Galileo Control Centre - Italy



### Control and operation centres

SIMOS integrated control centre - Stuttgart  
 Saxony's State Ministry of the Interior for Disaster  
 Prevention - Dresden  
 Carl Zeiss Optronics GmbH - Oberkochen



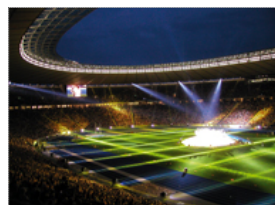
### Medicine and campus TV, Tele-Medicine

Asklepios Klinik - Germany  
 Karl Storz Systemtechnik GmbH - Tuttlingen  
 Kingston University - London  
 Ludwig-Maximilian-University - Munich  
 University Hospital of Aachen (RWTH)  
 University Hospital of Würzburg  
 Medical Faculty of the University of Erlangen - Nuremberg  
 Eberhard Karls University in Tübingen



### Documentation and training

Al Jazeera Training Center - Qatar  
 Danone Research, Consumer Science - France  
 Fachkrankenhaus Coswig of the Technical University of Dresden  
 Medical Faculty of the University of Greifswald  
 Centre for Ophthalmology at the University of Cologne  
 UCC Faculty for Sign Language - Denmark



### Stadium and event TV

Al Jazeera Sports Monitoring - Qatar  
 Amsterdam Arena (Ajax Amsterdam) - Netherlands  
 BWM Group - Germany  
 Esprit Arena - Düsseldorf  
 Liverpool Football Club - Great Britain  
 Mercedes-Benz Centre - Stuttgart  
 Olympic stadium - Berlin  
 SAP Arena - Mannheim



### Monitoring, editorial TV and compliance recording

Al Jazeera - Qatar  
 N24 - Berlin  
 Ministry of Treasury - Rome  
 PLAZAMEDIA GmbH - Ismaning  
 ProSiebenSat1 Production - Munich  
 TV Markiza - Slovakia  
 Westdeutscher Rundfunk - Germany



### Video monitoring for control and command centres

Police, Government, Armed Forces, Defence,  
 Intelligence customers