

Turning Technologies offers a variety of high-quality, durable ResponseCard® keypads ("clickers") to meet your specific audience or student response goals and objectives. These interactive audience participation keypads are designed to support the advanced functionality of all our software and hardware offerings. Each ResponseCard model features the latest in response keypad technology and are among the smallest and lightest response pads in the industry. See the chart below for more information, or contact a sales team member that will customize a solution to fit your needs.



ResponseCard RF LCD



ResponseCard XR



ResponseCard NXT

Small to Medium Group	✓	✓	✓
Small to Large Group	✓	✓	✓
Radio Frequency (RF) with 2-Way Verification	✓	✓	✓
200 to 400 Foot Range	✓	✓	✓
Radio Frequency (RF) USB Receiver	✓	✓	✓
ResponseCard AnyWhere Receiver	✓	✓	✓
Cell Phone Style Text Entry			✓
Self-Paced Testing Mode		✓	✓
Self-Registration		✓	✓
Durable, Rugged Case Ensures Maximum Longevity Under Extreme Conditions	✓	✓	✓
LCD Screen	✓	✓	✓
Weight: 1.0 oz with Coin Cell Batteries	✓		
Weight: 2 oz with 2 AAA batteries		✓	✓
6 to 12 Month Average Battery Life	✓	✓	✓
Deep Sleep Mode	✓	✓	✓
Available in Programmable and Fixed ID Modes	✓	✓	✓
ResponseCard Programmer	✓	✓	✓

RF Receiver (Radio Frequency)

Specifications

Key Feature

- Driver is preloaded on the operating system. Simply plug the receiver into the USB port and the device will immediately be recognized.

Enclosure

- Dimensions: 1.1" W x 3.7" L x 0.4" H
- Unit Weight: 1.0 oz

Power and power management

- Powered by USB port.

Range

- 200 ft (400 ft coverage).
- Range can be increased by utilizing multiple receivers or our long range receiver.
- Choose from up to 82 radio frequency channels for simultaneous polling.

Capacity

- Recommended for up to 1000 ResponseCards per (1) RF Receiver.
- Can be increased with multiple RF Receivers.

Software Compatibility

- TurningPoint 4.2 or higher for PC / Mac
- TurningPoint AnyWhere 2.0 or higher for PC / Mac
- RemotePoll 1.2 or higher
- TestingPoint 1.2 or higher

Input Device Compatibility

- ResponseCard RF LCD
- ResponseCard NXT
- ResponseCard XR



ResponseCard RF LCD

ResponseCard RF LCD is the latest version of our ResponseCard keypad, designed so that participants receive visual confirmation of input. The LCD screen displays response selected, channel setting and battery life.

The ResponseCard is the size of a credit card, and provides the features and functionality required to ensure selections are accurate, timely and effortlessly transmitted to the presenter's receiver. Its lightweight and durable enclosure allows it to be easily transported from room to room or around the globe for optimum portability.



Specifications

Enclosure

- Dimensions: 3.3" L x 2.1" W x 0.3" H
- Weight: 1.0 oz with batteries
- Approximately size of a credit card
- Durable, rugged case for maximum longevity

User Input:

- 12 Keys (1/A - 10/J, Ch/Channel, ?)
- Answer Key - answers automatically transmitted
- Programmable -manually enter new ID number
- ResponseCard Programmer compatible

Display:

- Participants receive visual confirmation of transmissions on LCD screen, in addition to LED indicator. Successful transmissions are acknowledged via LED with a three second green light signal. Channel setting and battery life are always present on screen.

Power & Power Management:

- Two coin cell CR2032 (3.0V) lithium batteries
- Deep sleep mode when not in use
- Average battery life is six to 12 months

User Identification

- Select a channel in less than five seconds, indicating session choice.
- Select a channel anytime - even when a session is underway.
- Channel selection is stored in nonvolatile memory.
- Channel selection is preserved until changed by participant.

RF Technology:

- 82 channels can be running at once in close proximity.
- Fully FCC, CE and Industry Canada certified.
- Will not interfere with other technologies.

Range:

- 200 ft range (400 ft coverage)

ResponseCard XR

ResponseCard® XR is Turning Technologies' most feature rich response hardware. ResponseCard XR's multi-line LCD display and alphanumeric entry make it an ideal tool for self-paced assessment. Boasting the largest storage capacity of any keypad on the market, ResponseCard XR utilizes the most advanced technology available ensuring maximum user participation.

ResponseCard XR keypads and receiver fit into a light weight, custom carrying case. Compact size and light weight design ensures ease of system transportation whether it be from room to room or around the globe.



Specifications

Enclosure

- Lightweight, compact, card format.
- Dimensions: 4.0" L x 2.5" W x 0.75" H.
- Weight: 2.0 oz (with batteries).
- Angled LCD screen for optimum viewing.
- Durable, rugged case ensures maximum longevity under extreme conditions.

User Input

- 20 Key (1(A) – 10(J)), Answer Mode, Go to, Enter, Yes, No, Menu, Select, Clear, +/-, . (decimal).

Display

- Easy to read LCD Display.
- Dimensions: 50 mm x 20mm viewable area.
- Display Features: Channel Number, Battery Life Indicator, Answer Choice, Response Confirmation.

Power & Power Management

- Powered by two AAA batteries.
- Average battery life is 6 to 12 months.

User Identification

- Fixed ID.
- Setup is plug and play with TurningPoint 2008.

RF Technology

- Available Channels: Up to 74 sessions can be running at one time in close proximity without interference.

Range

- In presentation mode - Range for one RF Receiver is 200 feet (400 ft coverage)
- In self-paced testing mode - Data is stored in nonvolatile memory until individual finishes test and uploads responses.

Receiver Compatibility

- ResponseCard XR requires a 2.4 version [RF Receiver](#) with 2008 licensing.

Functionality Highlights

Input Capabilities

- Alphanumeric Entry
- Multi-Digit Entry
- Decimal Point Entry
- Positive/Negative Entry

Roster Creation

- Automatically create participant rosters with ResponseCard XR's user stored data or have participants login to existing rosters. Easily move from one classroom or session to another.

Self-Paced Testing

- Participants use ResponseCard XR to navigate to any question on the test or assignment and select a response. The ResponseCard XR has the largest storage capacity in the industry, storing all responses into nonvolatile memory to ensure data security and stability.

Successful Transmission

- Participants and administrators receive visual successful transmission notification.

USB Capabilities

- Firmware upgrades via ResponseCard XR's USB port allow for product updates

ResponseCard NXT

ResponseCard NXT offers the same response features as other RF keypads, with advanced capabilities such as cell-phone style text entry for short answer and essay questions. The main feature that the NXT provides is its self-paced test mode for individual assessment. The unit also contains an LCD display that indicates responses have been received.



Highlighted Advanced Features

- Channel search
- Automatic input mode selection
- Cell-phone style text entry
- Letters, numbers, character and punctuation support
- Student ID submission with each response
- User feedback in both Presentation and Test mode
- Skip questions and return to questions at end of test
- Instructor can use real-time progress monitoring solution
- Test ID for each test created, test verification of information
- Instructor can display individual test results to each student
- Instructor can display total points, total percentage or custom message to each student

Specifications

Enclosure:

- Lightweight, compact, card format.
- Dimensions: 4.0" L x 2.5" W x 0.75" H.
- Weight: 2.0 oz (with batteries).
- Angled LCD screen for optimum viewing.
- Durable, rugged case ensures maximum longevity under extreme conditions.

User Input:

- Cell-phone style entry.
- 22 Keys (1/A - 10/J, Channel, Symbol, Delete, ABC Input, Left Function, Right Function, Up, Down, Left, Right, Enter and Space/.).

Display:

- Easy to read LCD Display.
- Dimensions: 50 mm x 20mm viewable area.

- Display Features: Channel Number, Battery Life Indicator, Answer Choice, Response Confirmation.

Power & Power Management:

- Powered by two AAA batteries.
- Average battery life is 6 to 12 months.

User Identification:

- Fixed device ID.
- Use ResponseCard Programmer to adjust ID.
- Setup is plug and play with TurningPoint 2008.

RF Technology:

- Up to 74 sessions can be running at one time in close proximity without interference.
- Fully FCC, CE and Industry Canada certified.
- Will not interfere with other technologies.

Range:

- Presentation Mode - Range for one RF Receiver is 200 feet (400 ft coverage).
- Test Mode - Data is stored in nonvolatile memory until individual finishes test and uploads responses.

Receiver:

- Dimensions: 1.1" W x 3.7" L x 0.4" H.
- Unit Weight: 1.0 oz.
- ResponseCard NXT requires latest version of RF02 Receiver with 2008 licensing.

Functionality Highlights

Input Capabilities

- Multiple Choice
- Numeric Response
- True/False
- Multiple Response
- Fill-in-the-Blank
- Essay

Roster Creation

- Automatically create participant rosters with ResponseCard NXT's user stored data or have participants login to existing rosters. Easily move from one classroom or session to another.

Self-Paced Testing

- Participants use ResponseCard NXT to navigate to any question on the test or assignment and select a response. The ResponseCard NXT has the largest storage capacity in the industry, storing all responses into nonvolatile memory to ensure data security and stability.

Successful Transmission

- Participants and administrators receive visual successful transmission notification.

USB Capabilities

- Firmware upgrades via ResponseCard NXT's USB port allow for product updates.

TurningPoint® - PC

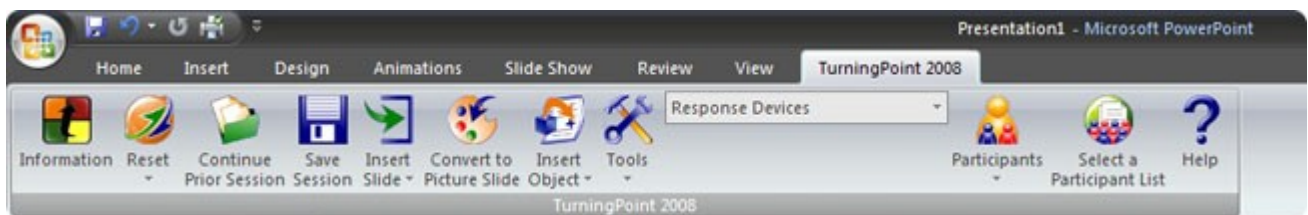


TurningPoint is our award-winning audience response solution. Ideal for all environments, it's 100% native with Microsoft PowerPoint®. For PowerPoint users, it is the easiest to use response solution on the market.

TurningPoint software in conjunction with ResponseCard® keypads (clickers) or ResponseWare software, creates a wireless audience response and voting system that enables educators, trainers and presenters to develop and administer real-time assessments of participants from within Microsoft® PowerPoint®. Transform your next presentations into a wireless audience response tool that can seamlessly identify and confirm participant understanding, increase participant attentiveness, and gather, rank and report critical information simultaneously in real-time.

TurningPoint provides further analysis of audience response data via reports that easily move data into preformatted MS Excel® and MS Word® templates. Sharing information is made simple through the TurningPoint response solution.

TurningPoint's unique design allows it to seamlessly operate with the leading hardware products and education content solutions, like Cengage and Glencoe/McGraw Hill, and productivity tools like Word, Excel, Blackboard, and WebCT. Our partners are the best in their industries.



Product Highlights

- Easy Installation - Plug and play hardware setup
- Native to Microsoft PowerPoint
- Customize your presentations with graphs, countdown timers and correct answer indicators
- Multiple post-session reporting options
- Support for remote locations via ResponseWare or RemotePoll— perfect for video conferencing meetings, trainings, and classes



Who's Using TurningPoint?

Today, TurningPoint is being used in a multitude of environments ranging from live and broadcasted classroom instruction in both k-12 and higher education to corporate consulting and training events, conference keynotes and sessions, and town hall meetings. The possibilities are endless.

System Requirements

TurningPoint 2008 4.2.4

- Microsoft Windows XP, Vista, or 7 32-bit or 64-bit OS
- Office 2003, 2007 or 2010
- Intel or AMD 600 MHz class processor (1 GHz or higher recommended)
- 256 MB RAM
- 60 MB hard disk space (an additional 32 MB is required if you do not have Microsoft .NET Framework 2.0 installed)
- 1024x768 resolution at 32-bit color or higher
- Standard USB 1.1/2.0 port (for USB-based hardware devices)
- Ethernet or 802.11 compatible wireless network card (for ResponseWare and PresenterWare use)